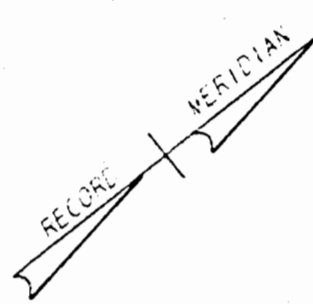
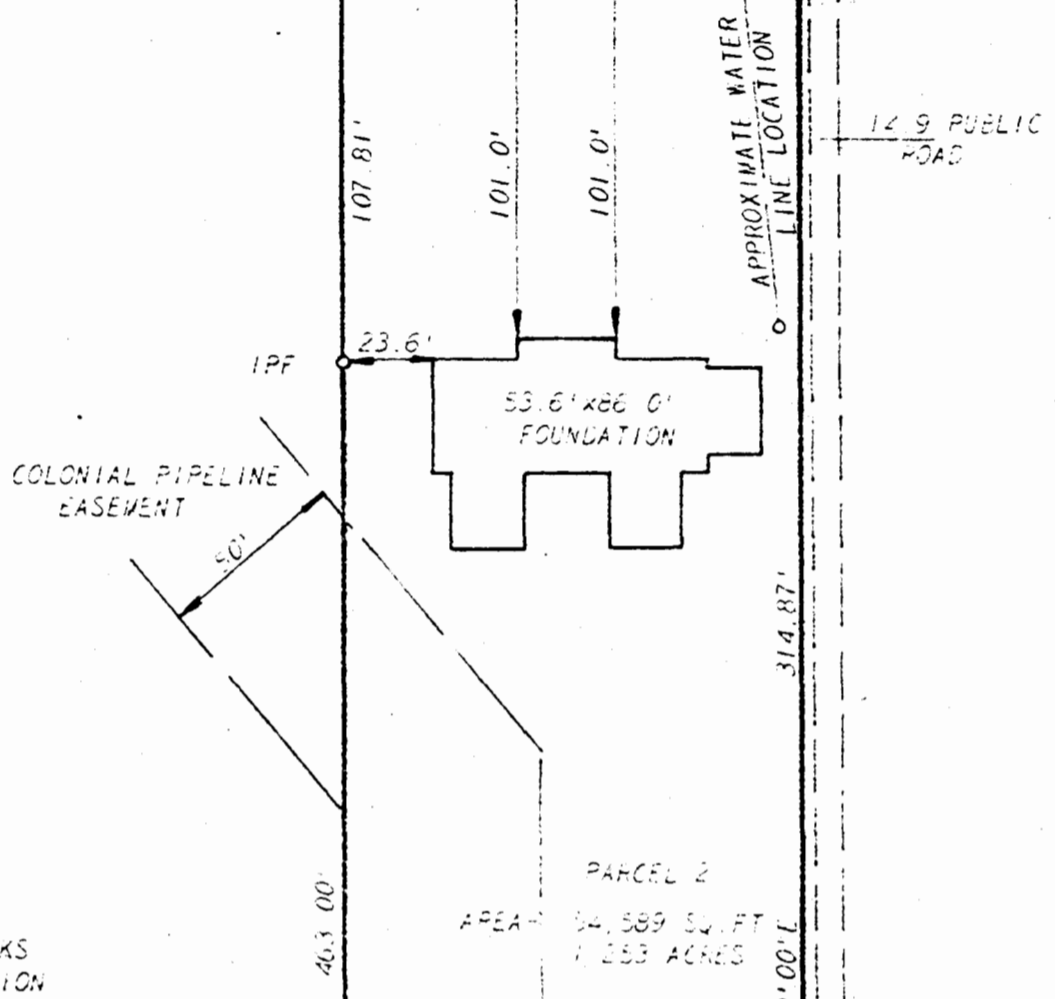


NOW OR FORMERLY WEIKEL

18" PINE
IPF N35°41'00"E 120.00' IPF



WHITE OAKS SUBDIVISION

PARCEL 2
AREA: 54,589 SQ. FT.
1.253 ACRES

- Δ - 151°14'32"
- R - 30.00'
- L - 79.19'
- T - 117.02'
- C - 58.13'
- CB - S54°19'00"E

38.0' x 31.0'
FRM. ASB.
SID. D.W.L.C.
(TO BE REMOVED)

11' x 7'
SHED

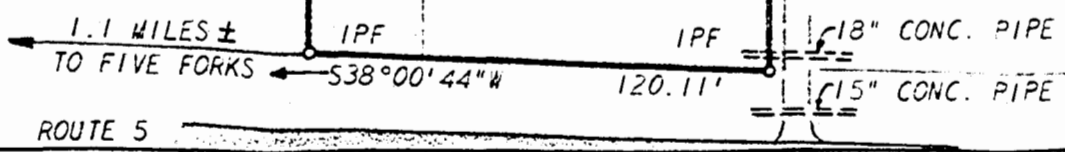
WELL

COLONIAL PIPELINE EASEMENT

PARCEL 1
AREA: 20,947.20 FT²
0.481 AC.



*REF: DB 85/514; DB 91/135;
DB 90/414; PB 10/47



L. V. WOODSON & ASSOCIATES, INC. ENGINEERS, SURVEYORS & PLANNERS, P. O. BOX 633 WILLIAMSBURG, VIRGINIA 23185

LEGEND ○ = IP = IRON PIN, □ = MON = MONUMENT, — = PROPERTY LINE, - - - = CENTERLINE, - - - - = EASEMENT LINE

A SURVEY OF TWO PARCELS OF LAND
STANDING IN THE NAME OF WILLIAMSBURG REAL ESTATE AGENCY, INC.
LYING IN BERKELEY DISTRICT, JAMES CITY COUNTY, VIRGINIA

SCALE: 1" = 50' REF: * CLOSURE J. O. 1495 DATE: AUGUST 8, 1973 AREA: 1.734 AC.

Recorded 8/27/73
DB 147 Page 131

PLAT BOOK 31 PAGE 15