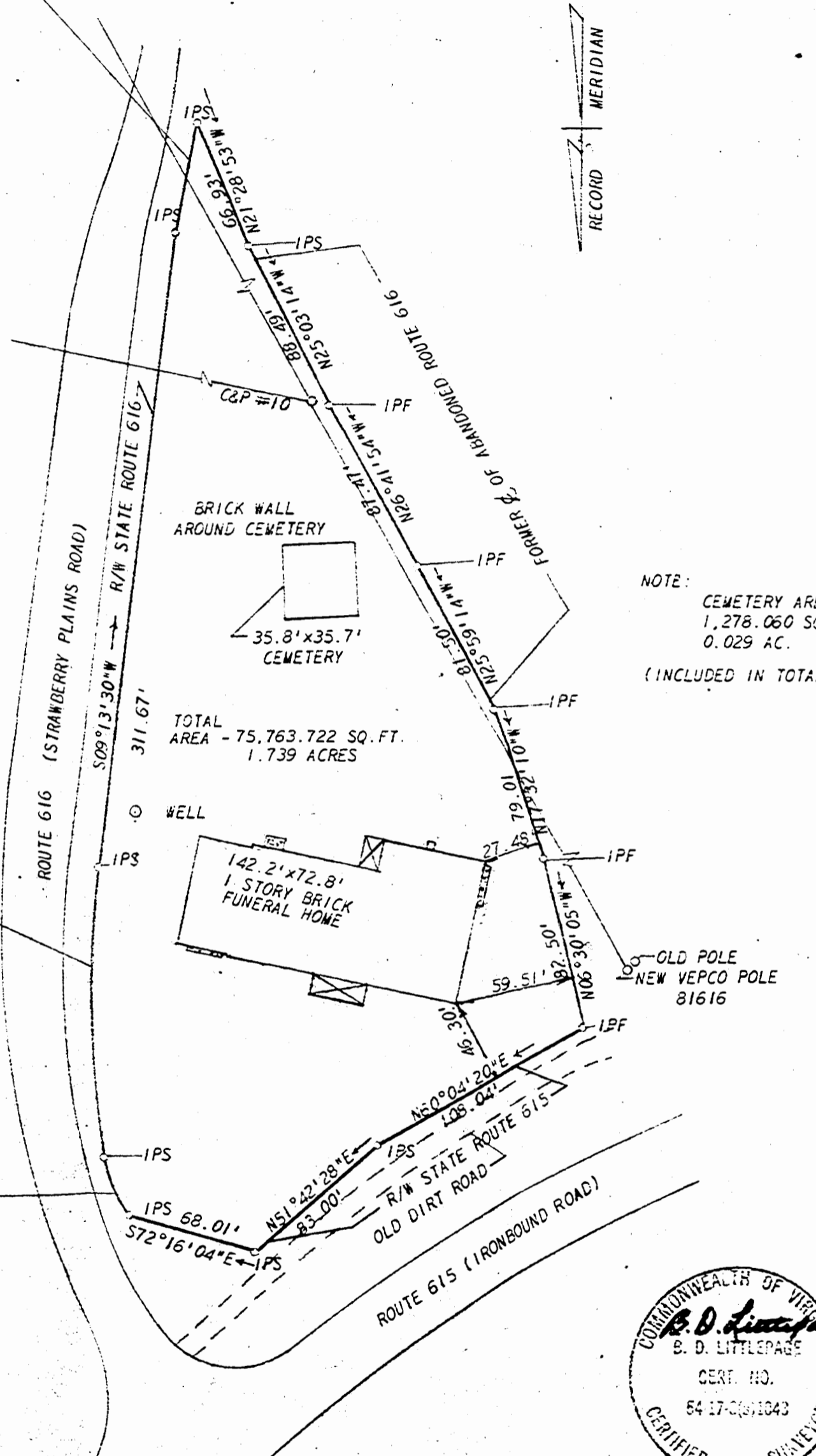


Δ 03°30'02"
 R - 924.93'
 L - 56.51'
 T - 28.26'
 C - 56.50'
 CB - S11°02'30"W

Δ - 18°00'00"
 R - 452.46'
 L - 142.15'
 T - 71.66'
 C - 141.56'
 CB - S00°13'31"W

Δ - 10°15'32"
 R - 179.63'
 L - 32.16'
 T - 16.13'
 C - 32.12'
 CB - S14°17'26"E



NOTE:
 CEMETERY AREA -
 1,278.060 SQ. FT.
 0.029 AC.
 (INCLUDED IN TOTAL AREA)



PLAT BOOK 31 PAGE 13
 Recorded 8/1/73
 See DB 146 Page 458

REF: DB37/53; 78/237

L. V. WOODSON & ASSOCIATES ENGINEERS & SURVEYORS, P. O. BOX 633 WILLIAMSBURG, VIRGINIA 23185

LEGEND ○ = IP = IRON PIN, □ = MON = MONUMENT, — = PROPERTY LINE, — — — = CENTERLINE, - - - - = EASEMENT LINE

A SURVEY OF 1.739 ACRES, STANDING IN THE NAME OF JAMES W. GARRISON AND FRANKLIN H. WHITTEN BERKELEY DISTRICT, JAMES CITY COUNTY, VIRGINIA.

REV: JULY 23, 1973.

SCALE: REF: ABOVE CLOSURE J.O. 1117-1 DATE 10/19/72 AREA 1.739 AC.