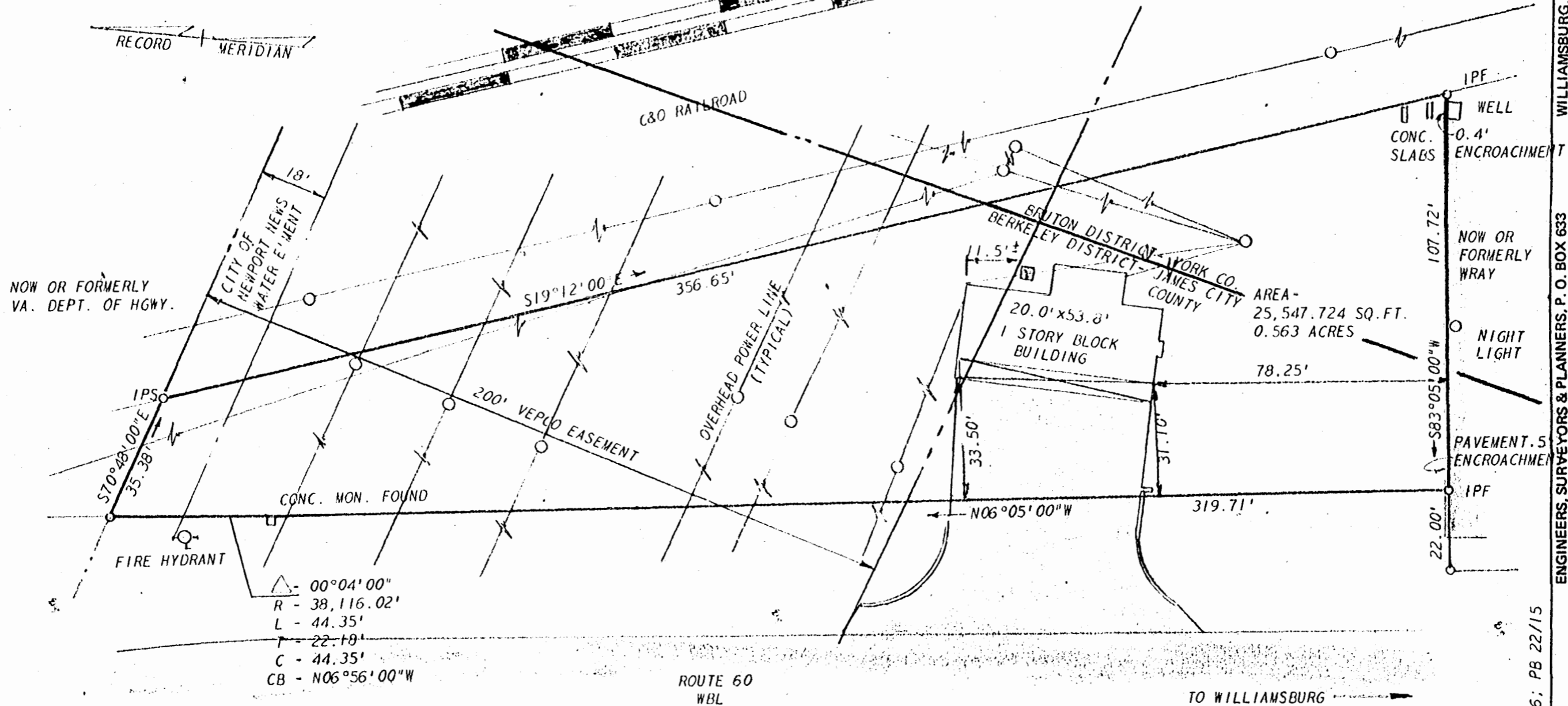


Recorded 7/19/73  
See DB 146 Page 155

ok  
LWW



$\Delta$  - 00°04'00"  
 R - 38,116.02'  
 L - 44.35'  
 T - 22.19'  
 C - 44.35'  
 CB - N06°56'00"W



REF: DB 207/652; DB 114/326; PB 22/15

L. V. WOODSON & ASSOCIATES, INC. ENGINEERS, SURVEYORS & PLANNERS, P. O. BOX 633 WILLIAMSBURG, VIRGINIA 23185

LEGEND:  $\circ$  = IP = IRON PIN,  $\square$  = MON = MONUMENT, --- = PROPERTY LINE, - - - = CENTERLINE, - - - - - = EASEMENT LINE

A SURVEY OF A PARCEL OF LAND STANDING IN THE NAME OF WILBUR C. ANDERSON LYING IN BERKELEY DISTRICT, JAMES CITY COUNTY, VIRGINIA

SCALE: 1" = 30' REF: CLOSURE J. O. 1471 DATE JULY 19, 1973 AREA 0.563 AC.