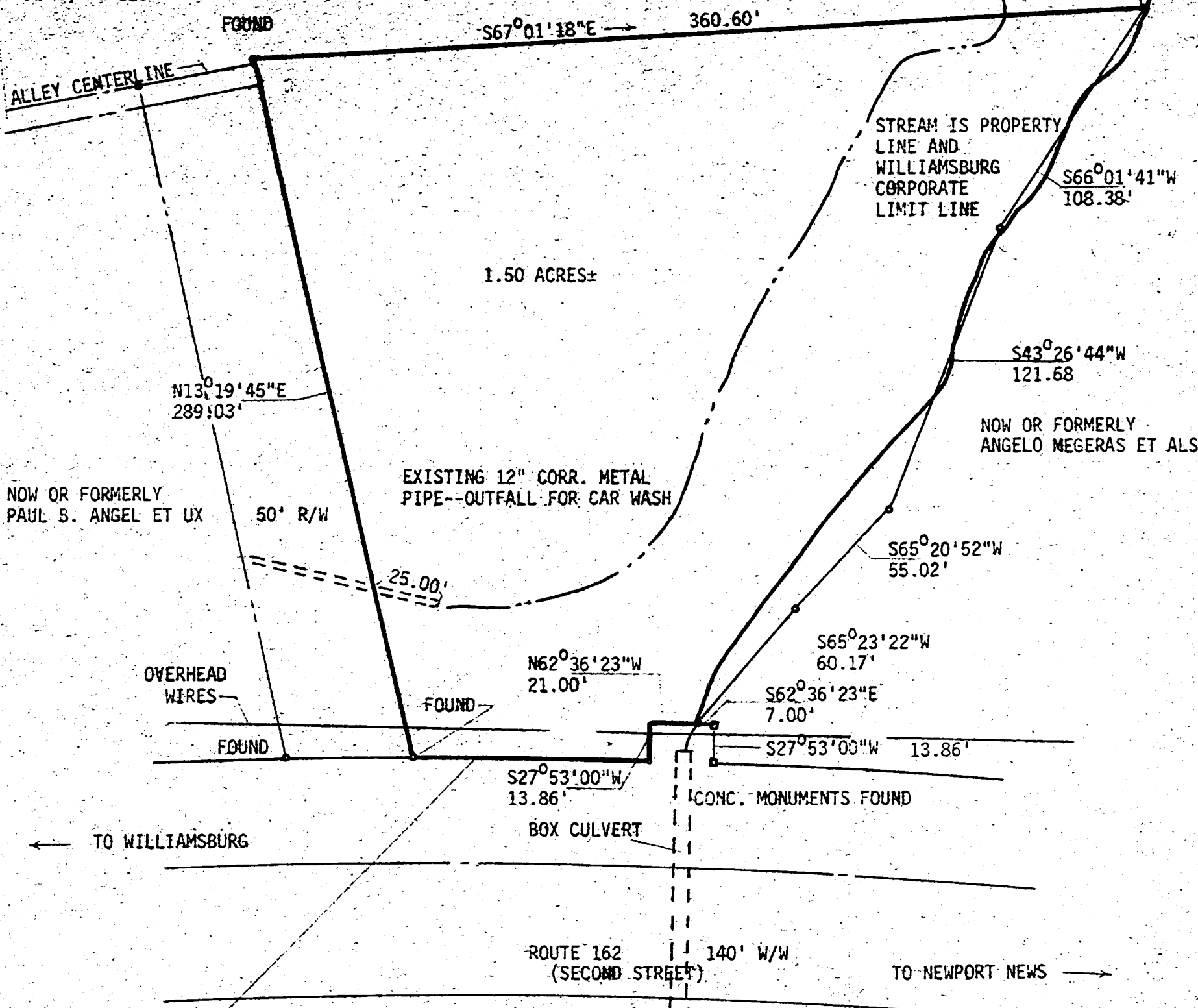


Recorded 5/17/73
See
DB 49 Page 654

NOW OR FORMERLY
ANGELO MEGERAS ET ALS

FORMER 15' ALLEY ABANDONED AND
QUIT CLAIMED BY RESOLUTION
CITY DB 45, PG 213, YORK COUNTY
PB 4, PG 228



CURVE:
 R = 2934.79'
 Δ = 1°52'28"
 L = 96.00'
 T = 48.01'
 CH = 96.00'
 CH BRG = N63°43'27"W



*REF: DB73/16 VDH PROJ. #0162-099-101, 0162-137-101, R/W201, C-501 SHEET 5

L. V. WOODSON & ASSOCIATES ENGINEERS & SURVEYORS, P. O. BOX 633 WILLIAMSBURG, VIRGINIA 23185

LEGEND: ○ - IP - IRON PIN, □ - MON - MONUMENT, ——— PROPERTY LINE, - - - CENTERLINE, - - - EASEMENT LINE

A SURVEY FOR CONVEYANCE - ELIZABETH H. BENSCHOTEN ET ALS, TO
~~AMERICAN REALTY TRUST~~
 J.L.S. ASSOCIATES, INC. WILLIAMSBURG, VIRGINIA

REVISED OCT. 28, 1971

SCALE: 1" = 50' REF: * CLOSURE -- J.O. 448 DATE 4-15-71 AREA 1.50 AC±

PLAT BOOK 30 PAGE 58