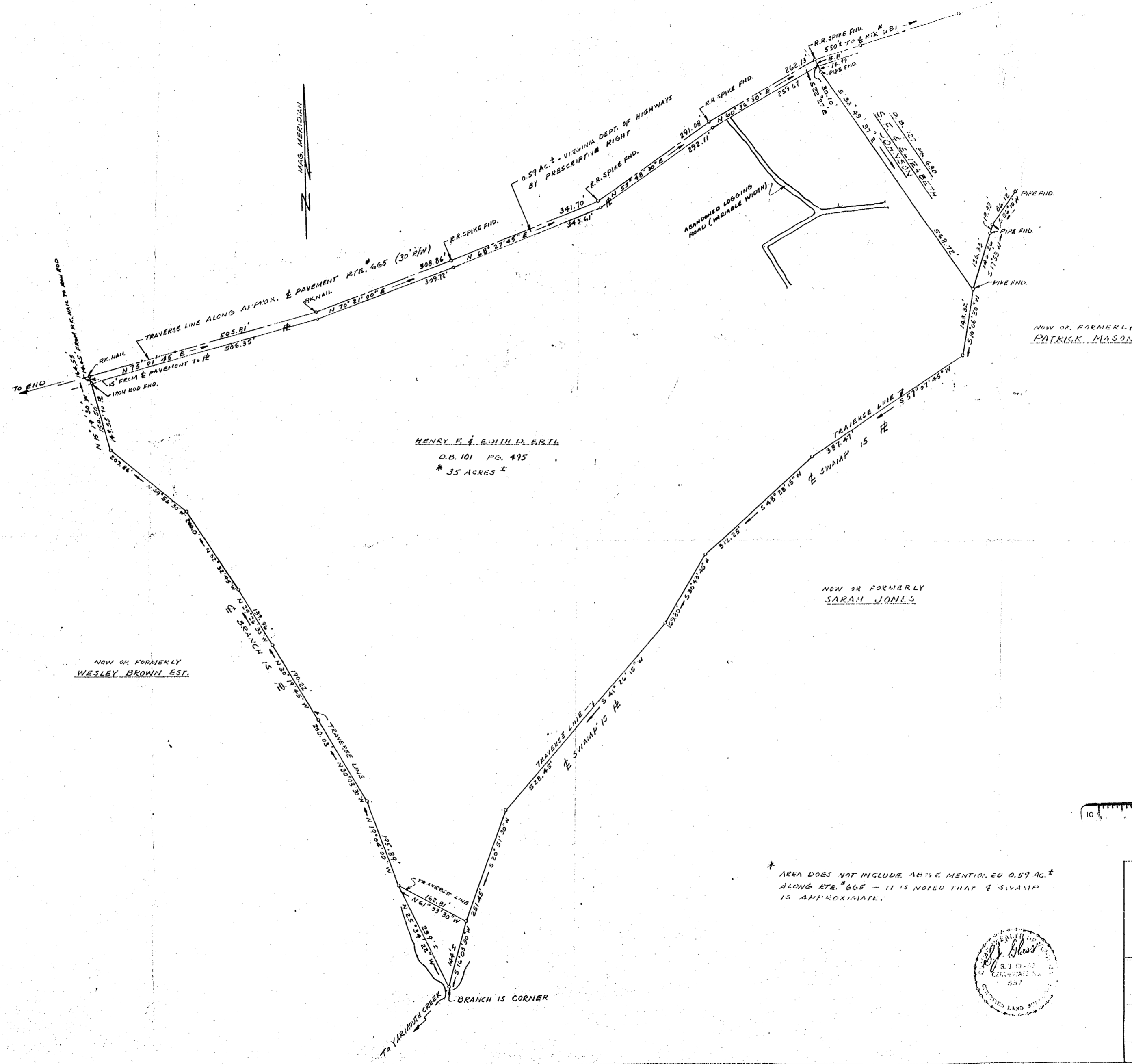


Recorded 11/6/72
See
DB 140 Page 25A



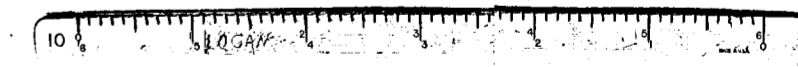
HENRY F. & EDITH D. ERTL
 D.B. 101 PG. 495
 * 35 ACRES ±

NOW OR FORMERLY
 WESLEY BROWN EST.

NOW OR FORMERLY
 SARAH JONES

NOW OR FORMERLY
 PATRICK MASON

* AREA DOES NOT INCLUDE ABOVE MENTIONED 0.59 AC. ±
 ALONG RTE. 665 - IT IS NOTED THAT E SWAMP
 IS APPROXIMATE.



PLAT SHOWING PROPERTY OF HENRY F. & EDITH D. ERTL BEING LOCATED ON RTE. 665 POWHATAN DISTRICT - JAMES CITY COUNTY VIRGINIA REV. JAN. 11, 1972 REV. DEC. 22, 1971 JULY 21, 1971 SCALE 1" = 100'	
S. J. GLASS AND ASSOCIATES ENGINEERING SERVICES - HAMPTON, VA.	
REFERENCES: D.B. 98 PG. 640 D.B. 98 PG. 642 (PLAT) D.B. 101 PG. 495 - 498	
FILE NO.	FIELD WORK BY: J.F.