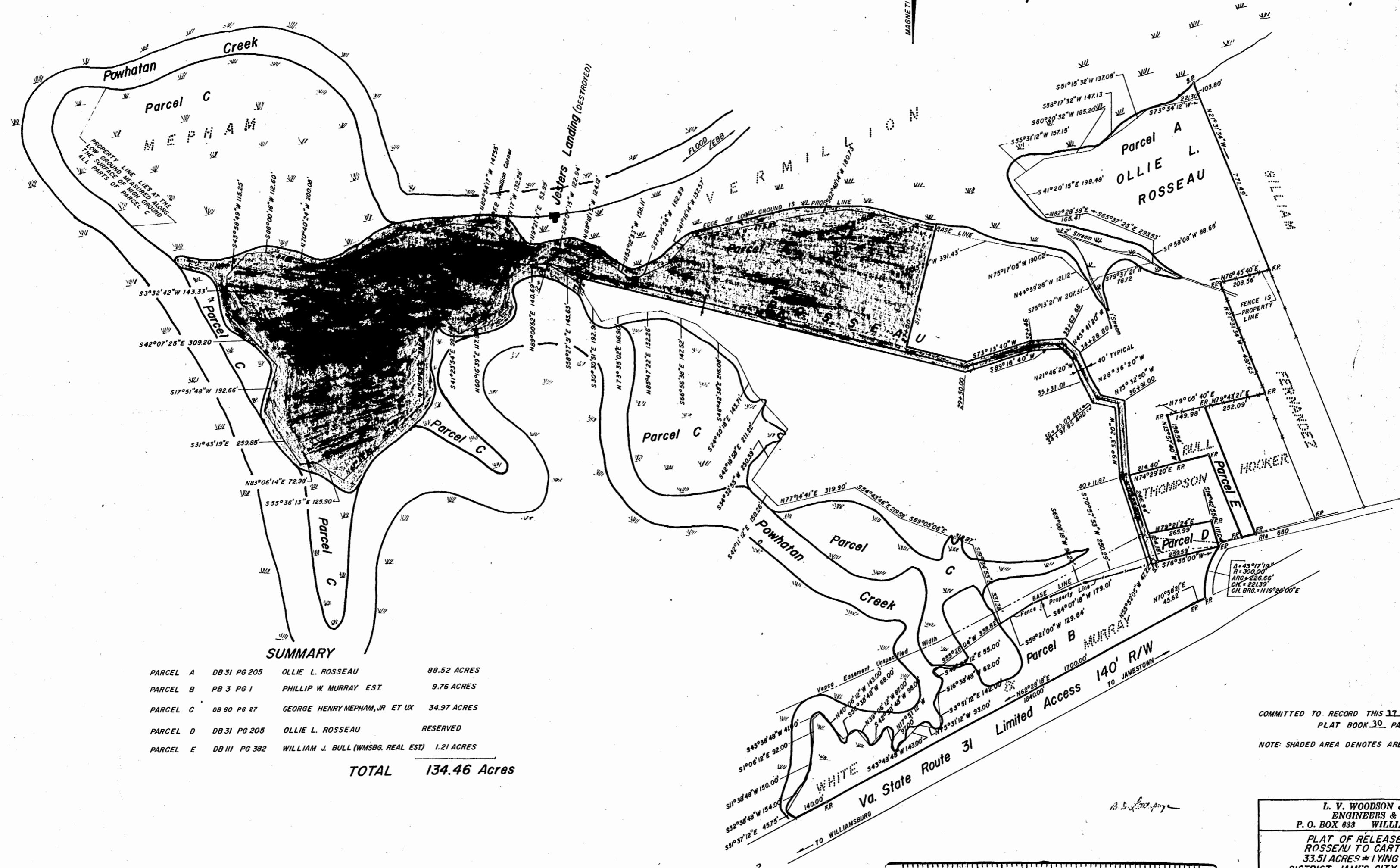


Recorded 8/17/72  
 See  
 DB 136 Page 543



**SUMMARY**

PARCEL A	DB 31 PG 205	OLLIE L. ROSSEAU	88.52 ACRES
PARCEL B	PB 3 PG 1	PHILLIP W. MURRAY EST.	9.76 ACRES
PARCEL C	DB 80 PG 27	GEORGE HENRY MEPHAM, JR. ET UX	34.97 ACRES
PARCEL D	DB 31 PG 205	OLLIE L. ROSSEAU	RESERVED
PARCEL E	DB III PG 382	WILLIAM J. BULL (WMSBG. REAL EST)	1.21 ACRES

**TOTAL 134.46 Acres**

COMMITTED TO RECORD THIS 17 DAY OF August, 1972.  
 PLAT BOOK 30 PAGE 13.  
 NOTE: SHADED AREA DENOTES AREA RELEASED BY THIS PLAT

L. V. WOODSON & ASSOCIATES  
 ENGINEERS & SURVEYORS  
 P. O. BOX 833 WILLIAMSBURG, VIRGINIA

PLAT OF RELEASE - OLLIE L. ROSSEAU TO CARTER HILL INC.  
 33.51 ACRES - LYING IN JAMESTOWN DISTRICT, JAMES CITY COUNTY, VIRGINIA

SCALE: 1"=200'  
 DATE: APRIL 3, 1972

DWG. 263-7

