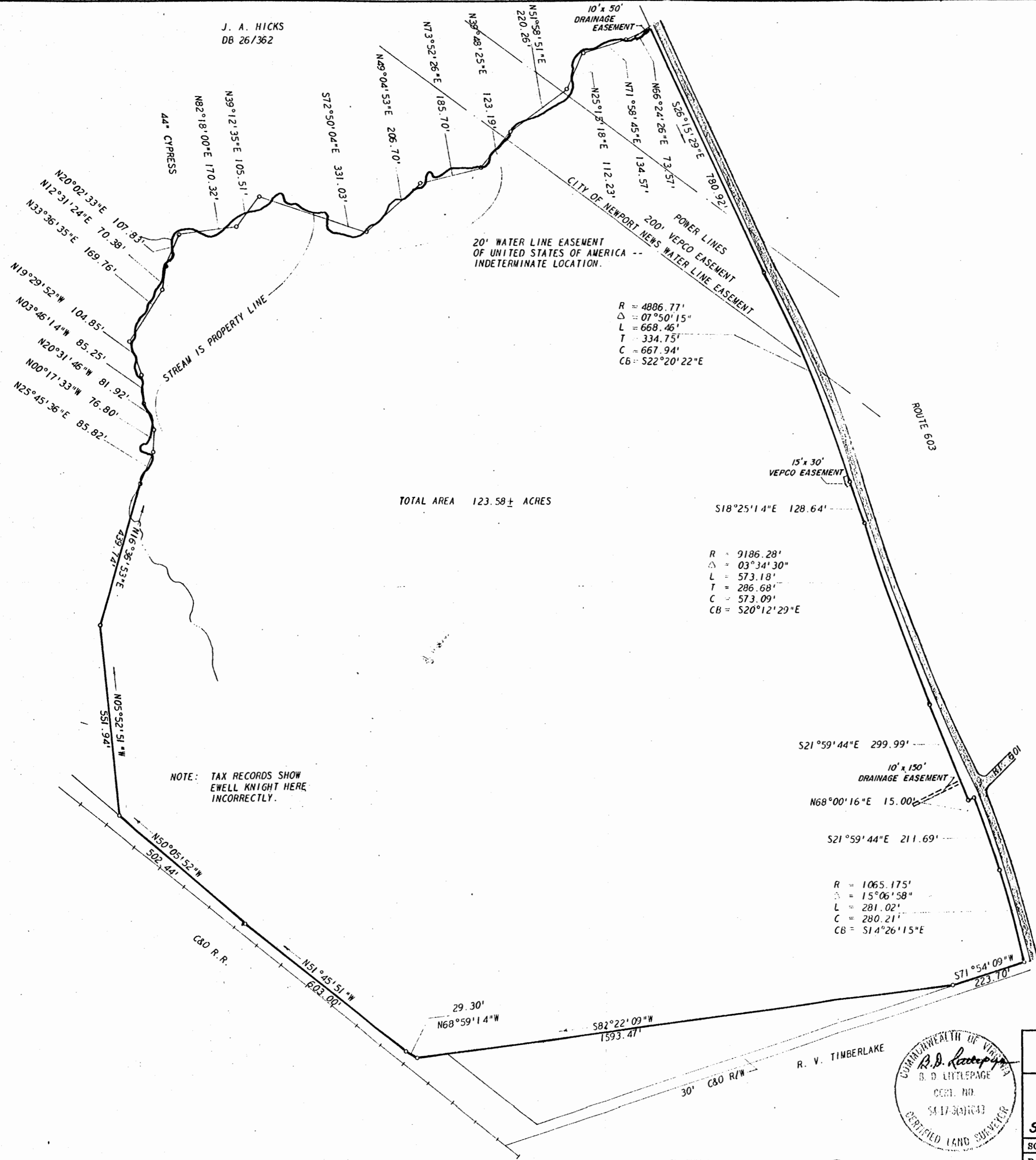


Recorded 8/11/72
See DB 138 Page 449

J. A. HICKS
DB 26/362



TOTAL AREA 123.58± ACRES

R = 4886.77'
Δ = 07°50'15"
L = 668.46'
T = 334.75'
C = 667.94'
CB = S22°20'22"E

R = 9186.28'
Δ = 03°34'30"
L = 573.18'
T = 286.68'
C = 573.09'
CB = S20°12'29"E

R = 1065.175'
Δ = 15°06'58"
L = 281.02'
C = 280.21'
CB = S14°26'15"E

NOTE: TAX RECORDS SHOW
EWELL KNIGHT HERE
INCORRECTLY.

R. L. JORDAN
DB 33/183

REFERENCE:

DB101/364
STONE & WEBSTER DWG. NO. 8623
SHEET 23 OF 49
C&O TRACK MAP NO. V-2
34



L. V. WOODSON & ASSOCIATES
ENGINEERS & SURVEYORS
P. O. BOX 633 WILLIAMSBURG, VIRGINIA

A SURVEY OF 123.58± ACRES STANDING IN THE NAME OF J.W.W. CHISMAN & THOMAS P. CHISMAN, LYING IN STONEHOUSE DISTRICT, JAMES CITY COUNTY, VIRGINIA

SCALE: 1" = 200' DWG. 789
DATE: APRIL 24, 1972