

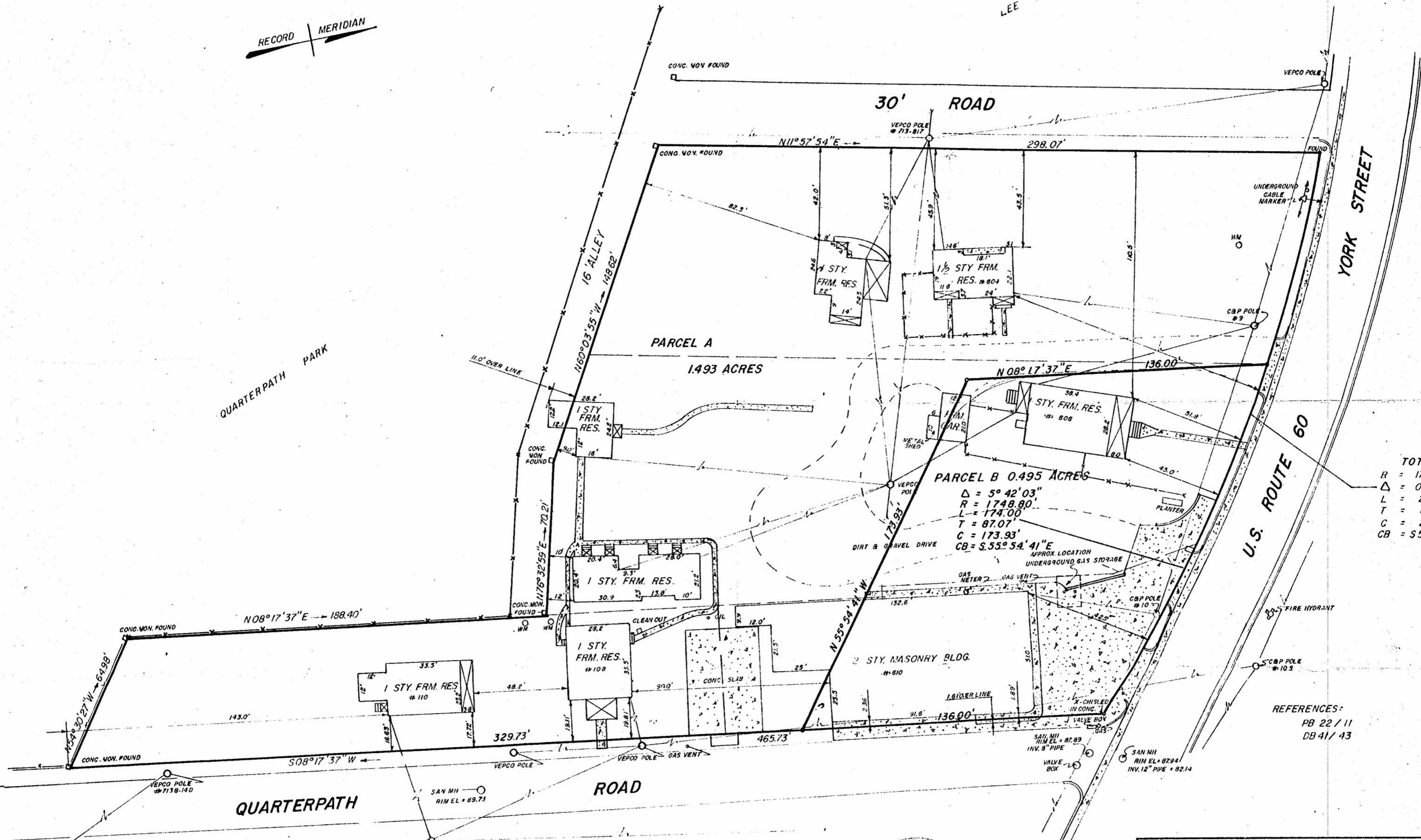
RECORD MERIDIAN

LEE WILLIAMS

QUARTERPATH PARK

YORK STREET

U.S. ROUTE 60



TOTAL
 R = 1748.80'
 Δ = 08°52'25"
 L = 270.84'
 T = 135.69'
 C = 270.57'
 CB = S57°29'50"E

REFERENCES:
 PB 22 / 11
 DB 41 / 43

LEGEND:
 ○ IRON PIPE
 □ CONCRETE MONUMENT
 WM WATER METER
 [Stippled] CONCRETE
 - - - FORMER LOT LINES

NOTES:
 AREA = 86,626 SQ. FT. = 1.988 ACRES



L. V. WOODSON & ASSOCIATES
 ENGINEERS & SURVEYORS
 P. O. BOX 633 WILLIAMSBURG, VIRGINIA

A SURVEY FOR CONVEYANCE - CHARLES M. & NELL G. PETERSON TO KENRICH CORPORATION - 1.988 ACRES & IMPROVEMENTS LYING IN CITY OF WILLIAMSBURG, VIRGINIA

SCALE: 1" = 30' DWG. 744 REV MAY 24, 1972
 DATE: DECEMBER 29, 1971

