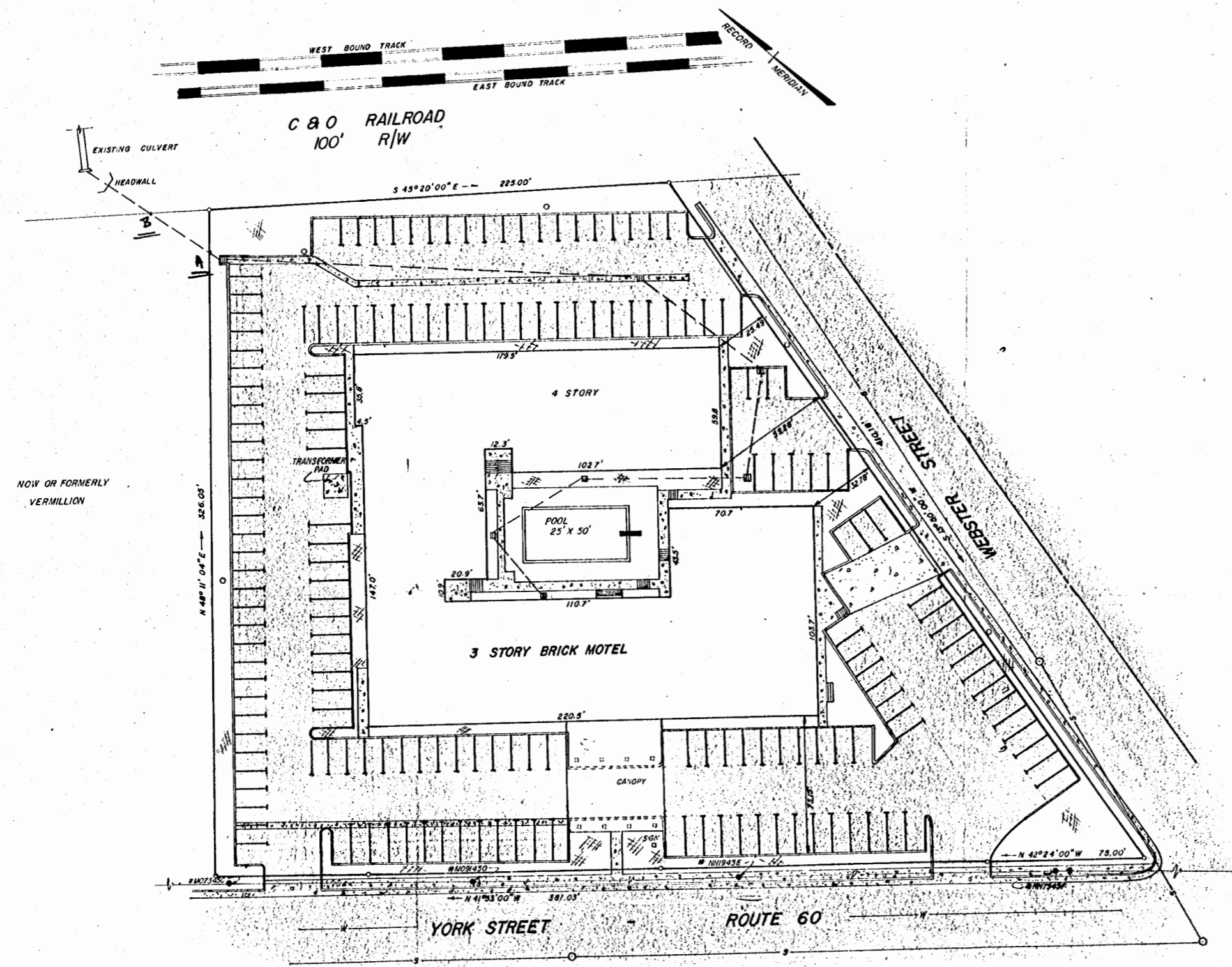


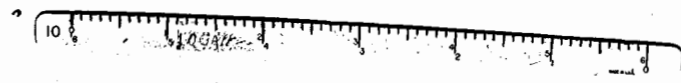
Recorded 7/19/72
See
DB 48 Page 626



NOTES:
 179 PARKING SPACES
 AREA = 114,096.27 SQ. FT.
 2.619 ACRES

REFERENCE: DB 47 / 261

- LEGEND**
- PROPERTY LINE
 - IRON PIPE
 - S— SEWER LINE
 - CONCRETE LIGHT POLE
 - VERCO POLE
 - /— EARTH
 - CATCH BASIN
 - CONCRETE
 - +— FIRE HYDRANT
 - PAVEMENT
 - W— 6" WATER LINE
 - - - STORM SEWER



L. V. WOODSON & ASSOCIATES
 ENGINEERS & SURVEYORS
 P. O. BOX 633 WILLIAMSBURG, VIRGINIA

**A SURVEY OF PROPERTY STANDING
 IN THE NAME OF YORK STREET INN, INC.
 WILLIAMSBURG VIRGINIA**

SCALE: 1" = 30' DWG. 997
 DATE: JUNE 23, 1972

NOW OR FORMERLY
 VERMILLION