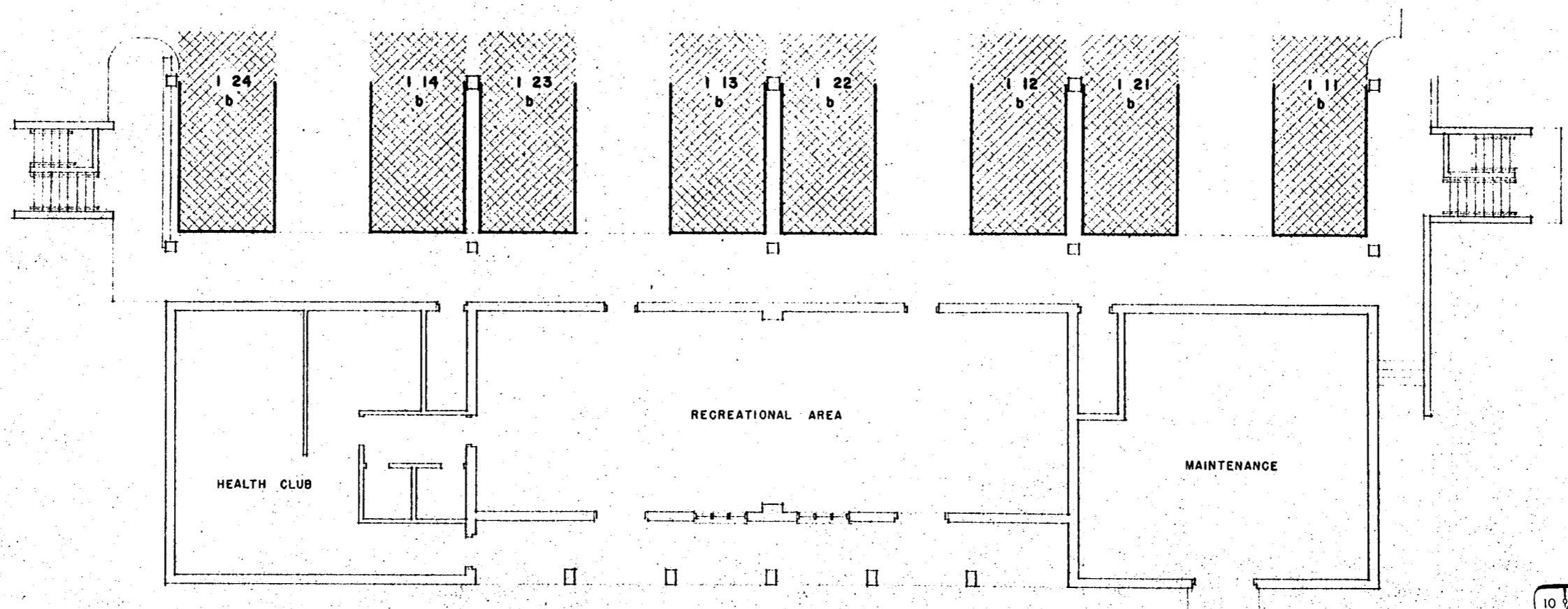
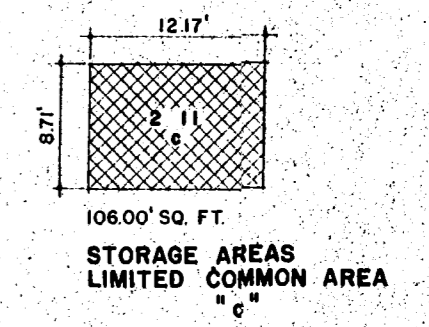
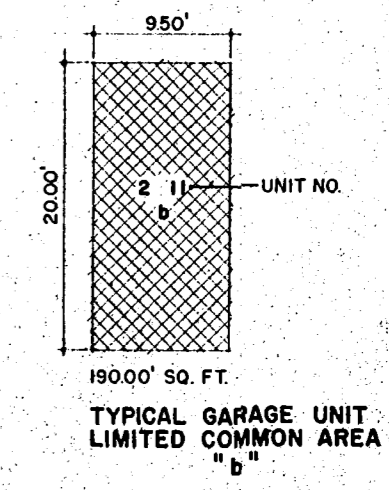


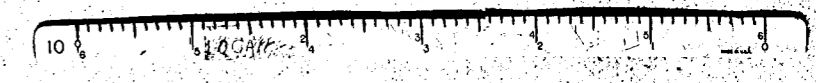
BUILDING NO. 2
PARKING LEVEL



BUILDING NO. 1
PARKING LEVEL

PARKING LEVEL UNIT DIMENSION PLANS
(SEE SITE PLAN FOR BUILDING LOCATION AND ORIENTATION)

ENGINEERS' CERTIFICATE
I hereby certify that I am a registered professional engineer of the State of Virginia and that this plan consisting of 8 sheets represents a true and complete survey of the surface of the land based on a horizontal survey by Stephen Stephens and a vertical survey by Langley, McDonald & Ovaran; included within this project made under my supervision during 1970 and 1971.
I further certify that the monuments and benchmarks shown hereon are of the character and occupy or will occupy the positions indicated and that they are or will be sufficient to enable this survey to be retraced.
I further certify that the diagrammatic plans of buildings to be built in the project set forth in the attached plan are in sufficient detail to identify each unit, its relative location and approximate dimensions.



Stephen Stephens
C. T. LANGLEY
DEC 17 1971
5 OF 8
12-18-71