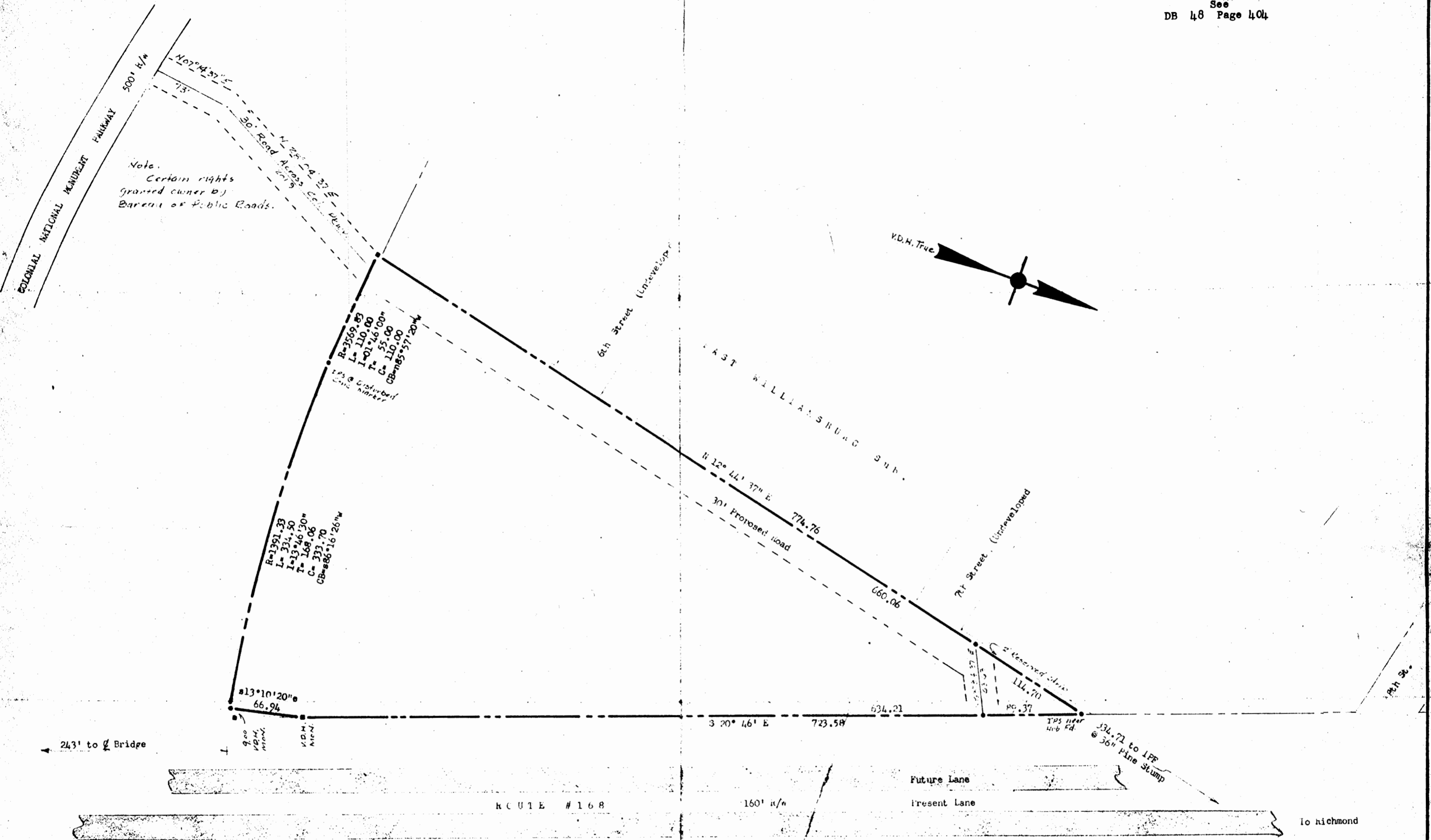
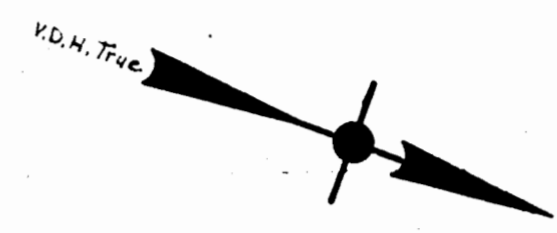


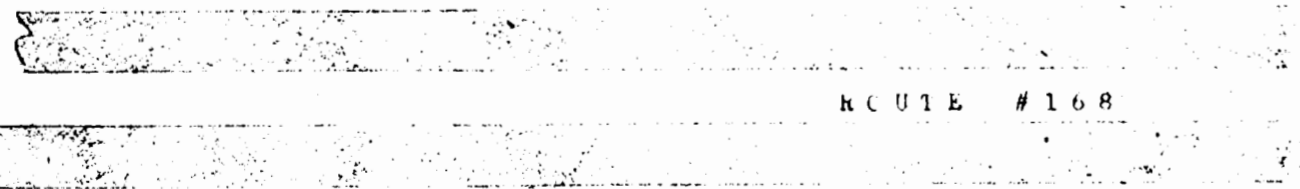
Recorded 6/8/72  
See  
DB 48 Page 404



Note:  
Certain rights  
granted owner by  
Bureau of Public Roads.



243' to Bridge



Stephen Stephens

NOTE: Acreage = 3.995 Acres.  
 iron pipes at all corners  
 except as noted.  
 bearings are clockwise.  
 ref.: York County L.O. #57, p. #120  
 " " 50 75  
 See note above.  
 Revision: 1-9-71 by S.S.

PLAT of:  
 That part of property of:  
 B. E. STEBL  
 To be conveyed to:  
**PARKWAY TOWERS, INC.**  
 Scale: 1" = 60' Feb. 1966  
 Formerly: BRUTON DISTRICT, YORK COUNTY, VIRGINIA  
 Annexed by: CITY OF WILLIAMSBURG, VIRGINIA