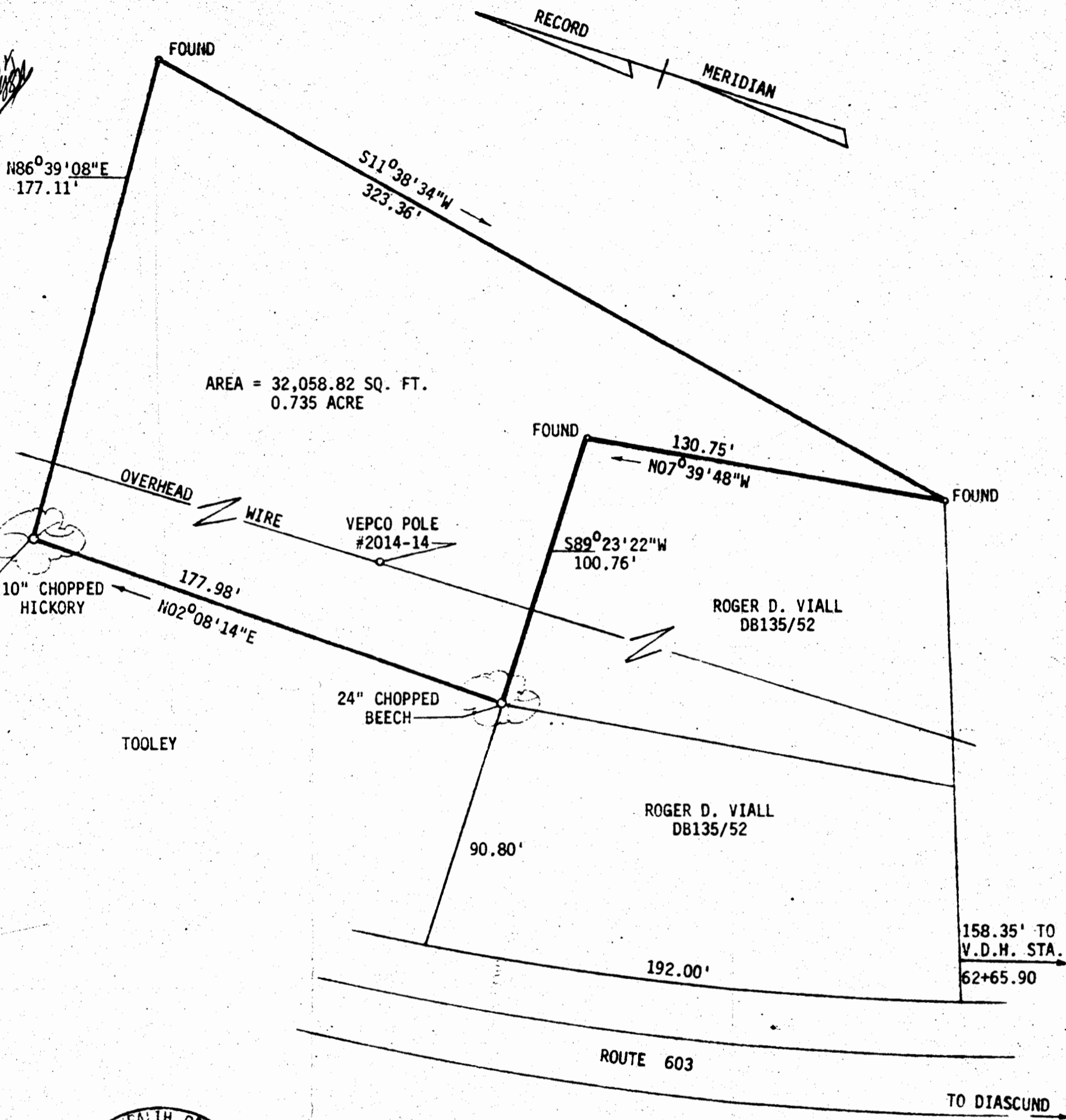


TOOLEY



AREA = 32,058.82 SQ. FT.  
0.735 ACRE

ROGER D. VIAL  
DB135/52

ROGER D. VIAL  
DB135/52

158.35' TO  
V.D.H. STA.  
62+65.90

ROUTE 603

TO DIASCUND  
STATION



Recorded 4/25/72  
See  
DB 136 Page 390

V. WOODSON & ASSOCIATES ENGINEERS & SURVEYORS, P. O. BOX 633 WILLIAMSBURG, VIRGINIA 23185

LEGEND ● = IP = IRON PIN, □ = MON = MONUMENT, — = PROPERTY LINE, - - - = CENTERLINE, - - - - = EASEMENT LINE

A SURVEY FOR CONVEYANCE - HALLIE D. TOOLEY, JR., ET UX, TO ROGER D. & BARBARA B. VIAL - 0.735 ACRES,  
LYING IN STONEHOUSE DISTRICT, JAMES CITY COUNTY, VIRGINIA.

SCALE: 1" = 40' REF: DB135/52 CLOSURE J. O. 845 DATE 3/13/72 AREA 0.735 AC.

DB84/36

PLAT BOOK 29 PAGE 45