

U.S. NATIONAL PARK SERVICE

PLAT SHOWING A PORTION OF
EAST WILLIAMSBURG SUBDIVISION
CITY OF WILLIAMSBURG, VIRGINIA.

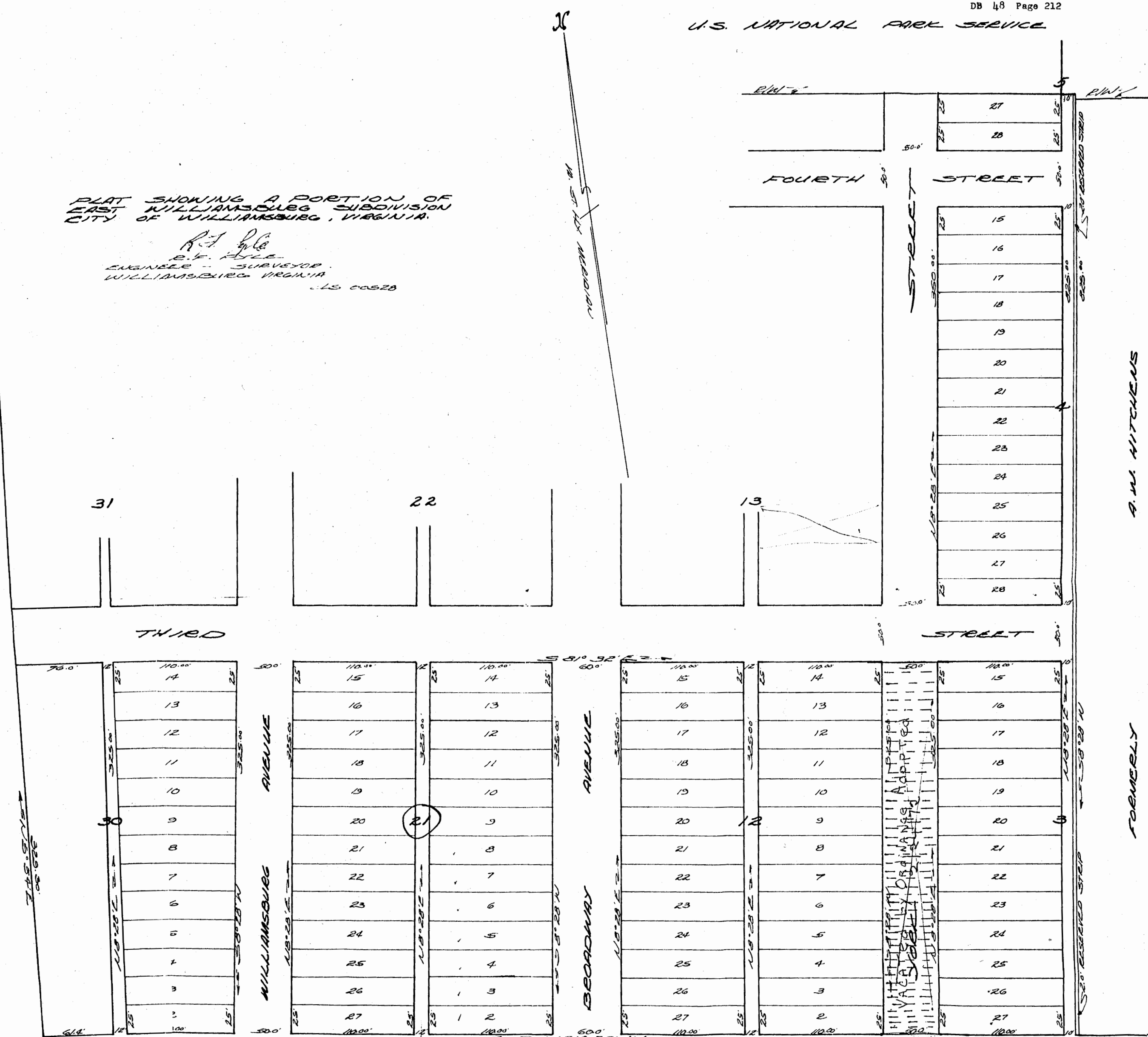
R. F. Kyle
E. F. Kyle
ENGINEER - SURVEYOR
WILLIAMSBURG, VIRGINIA
L.S. 00520

PINE CREST SUBDIVISION

FORMERLY
MURPHY SUTTON

FORMERLY
A. W. HITCHENS

FORMERLY



SECOND VA. ST. HIGHWAY ROUTE NUMBER 162 STREET

BROOKS Agency INC
P.O. Box 67
Williamsburg VA 23185