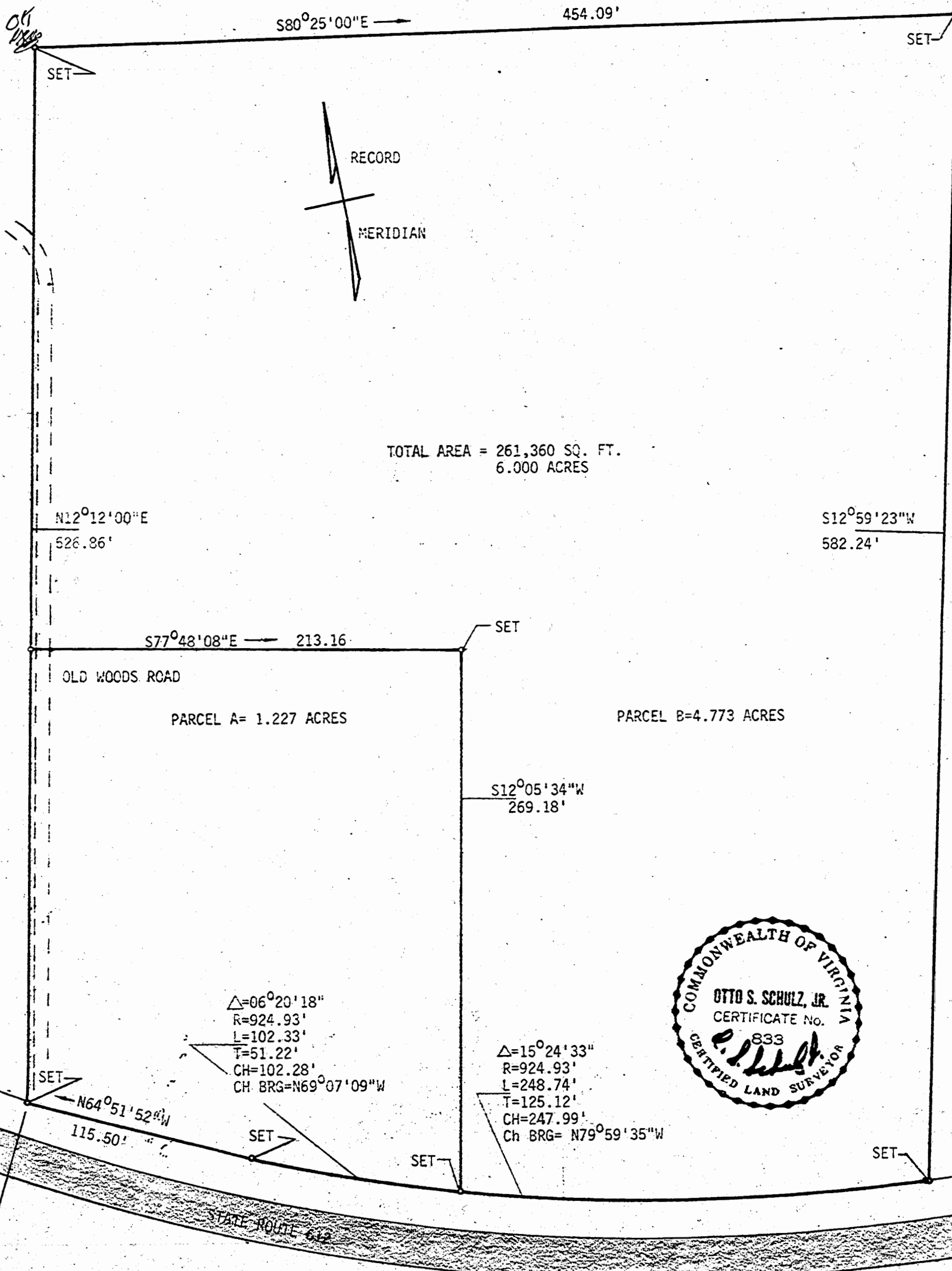


ROBERT ARMSTEAD

See DB 133 Page 626
Recorded 11/11/71



* DB59/300 PB15/47

L. V. WOODSON & ASSOCIATES ENGINEERS & SURVEYORS, P. O. BOX 633 WILLIAMSBURG, VIRGINIA 23185

LEGEND ○ = IP = IRON PIN, □ = MON = MONUMENT, — = PROPERTY LINE, - - - = CENTERLINE, - - - - = EASMENT LINE

A SURVEY FOR CONVEYANCE - LESTER BYRD LEWIS ET ALS TO LOUISE K. JOHNSON - 6.000 ACRES LYING IN POWHATAN DISTRICT, JAMES CITY COUNTY, VIRGINIA. REVISED OCTOBER 26, 1971

SCALE: 1"=50' REF: * CLOSURE 1/12M J. O. 315 DATE 7-29-70 AREA 6.000 AC.