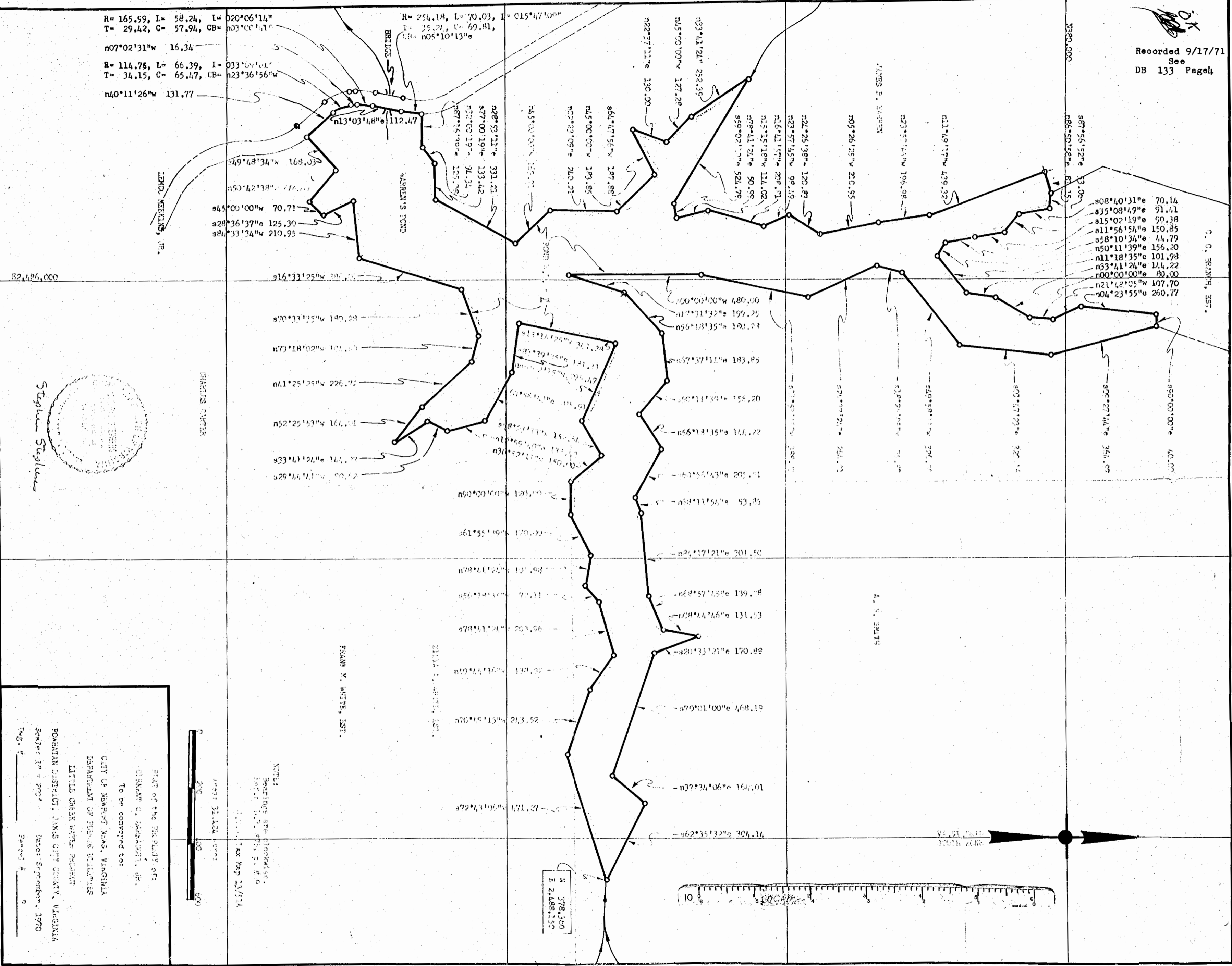


Recorded 9/17/71
See
DB 133 Page 4

R= 165.99, L= 58.24, I= 020°06'14"
T= 29.42, C= 57.94, CB= n03°00'41"
n07°02'31"W 16.34
R= 114.75, L= 66.39, I= 033°04'01"
T= 34.15, C= 65.47, CB= n23°36'56"W
n40°11'26"W 131.77

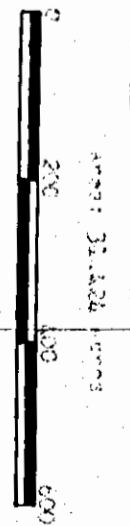
R= 254.18, L= 70.03, I= 015°47'00"
T= 35.21, C= 69.81,
CB= n05°10'13"E



52,486,000

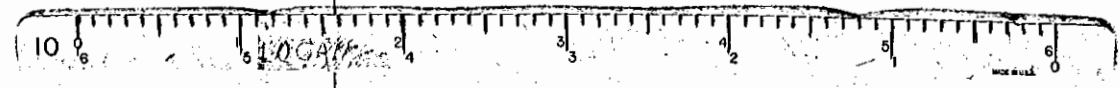
Staples
Staples

PLAT OF THE 2ND PART OF
ORDINANCE NO. 100-100-1
TO BE CONVEYED TO:
CITY OF NEWPORT NEWS, VIRGINIA
DEPARTMENT OF PUBLIC UTILITIES
LITTLE CREEK WATER PRODUCTION
POWATAN DISTRICT, JAMES CITY COUNTY, VIRGINIA
Bearing 1st 2nd 3rd
Based September, 1970
Twp. 4
Range 4



NOTE:
Bearings are clockwise
from North
Date: 10/2/71
TAX MAP 23/52A

N
378,340
E
2,488,150



V. S. 1/2
SOUTH ZONE