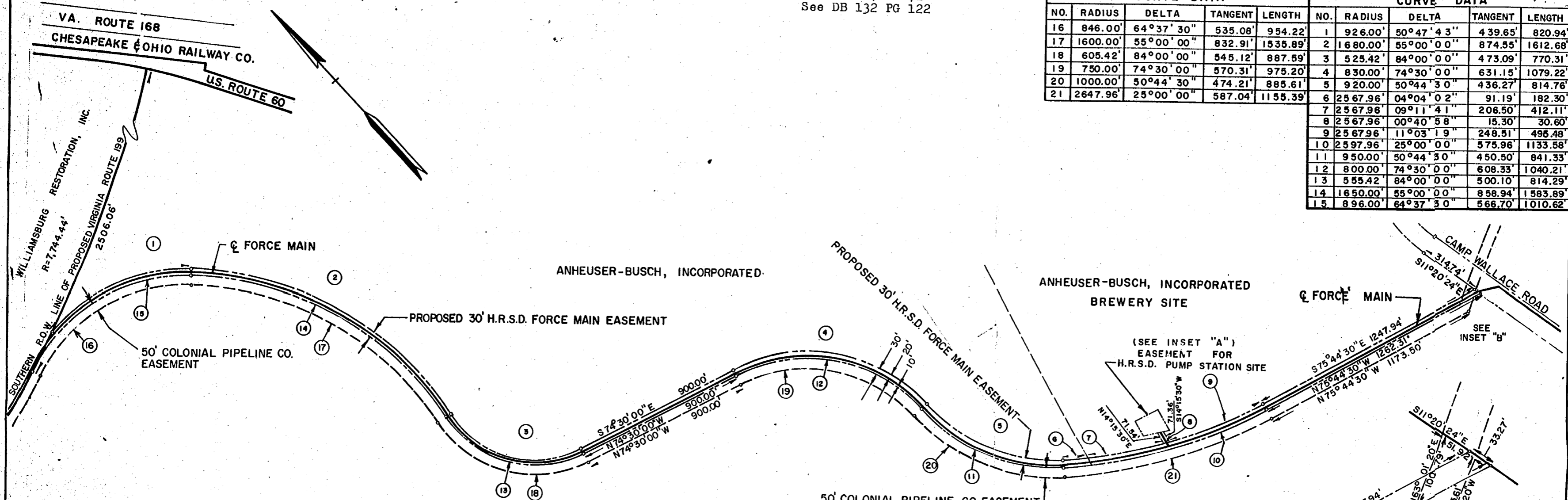
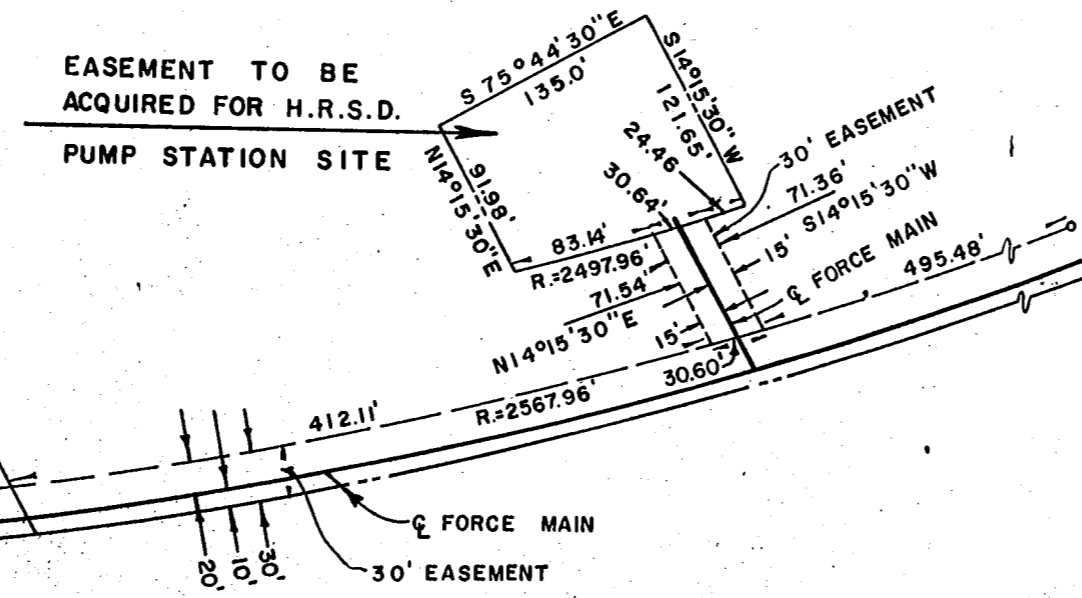


PLAT BOOK 28 PAGE 58
 Recorded 7-26-71
 See DB 132 PG 122

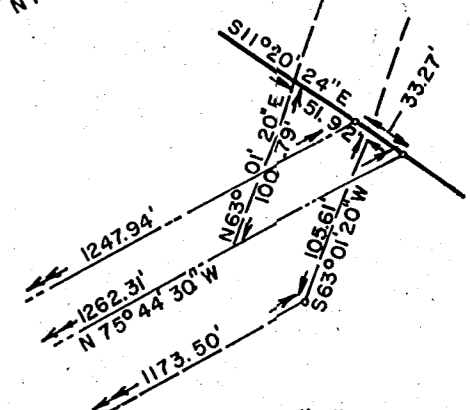
EASEMENT DATA					EASEMENT DATA				
CURVE DATA					CURVE DATA				
NO.	RADIUS	DELTA	TANGENT	LENGTH	NO.	RADIUS	DELTA	TANGENT	LENGTH
16	846.00'	64°37'30"	535.08'	954.22'	1	926.00'	50°47'43"	439.65'	820.94'
17	1600.00'	55°00'00"	832.91'	1535.89'	2	1680.00'	55°00'00"	874.55'	1612.68'
18	605.42'	84°00'00"	545.12'	887.59'	3	525.42'	84°00'00"	473.09'	770.31'
19	750.00'	74°30'00"	570.31'	975.20'	4	830.00'	74°30'00"	631.15'	1079.22'
20	1000.00'	50°44'30"	474.21'	885.61'	5	920.00'	50°44'30"	436.27'	814.76'
21	2647.96'	25°00'00"	587.04'	1155.39'	6	2567.96'	04°04'02"	91.19'	182.30'
					7	2567.96'	09°11'41"	206.50'	412.11'
					8	2567.96'	00°40'58"	15.30'	30.60'
					9	2567.96'	11°03'19"	248.51'	495.48'
					10	2597.96'	25°00'00"	575.96'	1133.58'
					11	950.00'	50°44'30"	450.50'	841.33'
					12	800.00'	74°30'00"	608.33'	1040.21'
					13	555.42'	84°00'00"	500.10'	814.29'
					14	1650.00'	55°00'00"	858.94'	1583.89'
					15	896.00'	64°37'30"	566.70'	1010.62'



INSET "A" SCALE: 1" = 100'



INSET "B" SCALE: 1" = 100'



PLAT OF EASEMENT
 FROM ROUTE 199 TO CAMP WALLACE
 TO BE ACQUIRED FROM
ANHEUSER-BUSCH, INCORPORATED
 JAMES CITY COUNTY, VIRGINIA

BY
 HAMPTON ROADS SANITATION DISTRICT
 SCALE: 1" = 400' SEPTEMBER 22, 1970

BALDWIN AND GREGG
 ENGINEERS · SURVEYORS · PLANNERS
 NORFOLK, VIRGINIA

REV: JUNE 15, 1971
 REVISED: MAY 4, 1971
 REVISED: APRIL 5, 1971
 REVISED: DEC. 15, 1970

WILLIAMSBURG INTERCEPTOR FORCE MAIN
 EASEMENT PLAT I

