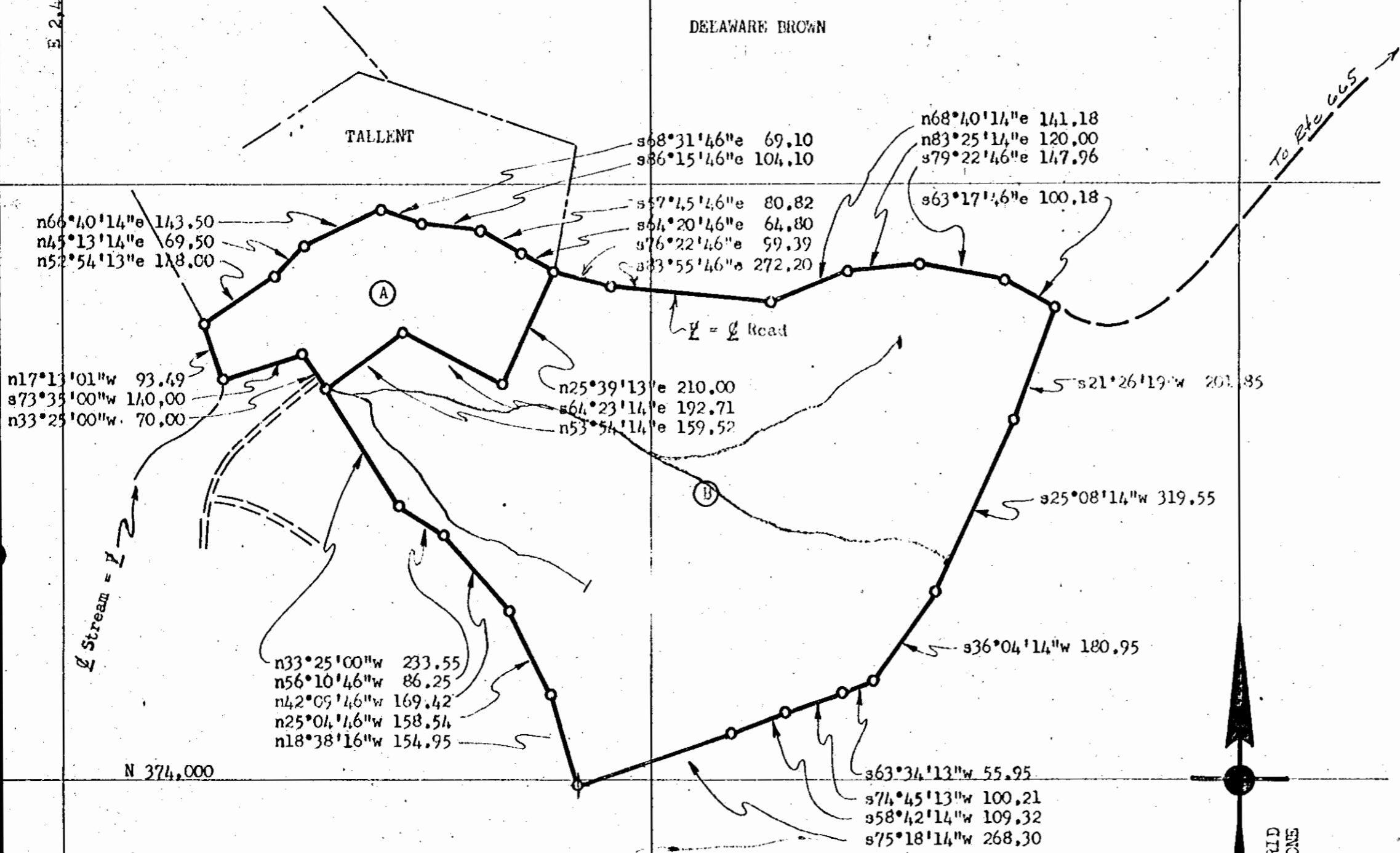


Recorded 2/25/71
 See DB 130 Page 472

E 2,482,000

DELAWARE BROWN

TALLENT



n66°40'14"e 143.50
 n45°13'14"e 69.50
 n52°54'13"e 118.00

n17°13'01" w 93.49
 s73°35'00" w 110.00
 n33°25'00" w 70.00

n33°25'00" w 233.55
 n56°10'46" w 86.25
 n42°09'46" w 169.42
 n25°04'46" w 158.54
 n18°38'16" w 154.95

s68°31'46" e 69.10
 s86°15'46" e 104.10

s57°15'46" e 80.82
 s64°20'46" e 64.80
 s76°22'46" e 59.39
 s83°55'46" e 272.20

n68°40'14" e 141.18
 n83°25'14" e 120.00
 s79°22'46" e 117.96

s63°17'46" e 100.18

n25°39'13" e 210.00
 s64°23'14" e 192.71
 n53°54'14" e 159.52

s21°26'19" w 201.85

s25°08'14" w 319.55

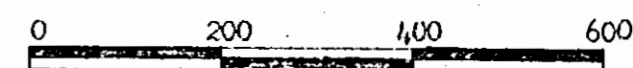
s36°04'14" w 180.95

s63°34'13" w 55.95
 s74°45'13" w 100.21
 s58°42'14" w 109.32
 s75°18'14" w 268.30

To Etc. 665



Stephen Stephens



NOTE:
 Iron pipes at all reservoir boundary corners except as noted.
 Bearings are clockwise.
 Ref.: D.B. #99, p. #132; D.B. #104, p. #13; P.B. #12, p. #13.
 J.C.C. Tax Map 13/17 & 13/18
 Area:
 A = 2,506 acres
 B = 15,048 acres
 Total = 17,554 acres

N 374,000

VA. ST. GRID SOUTH ZONE

DELAWARE BROWN

PLAT of PART of the PROPERTY of:
 JOSEPH E. & HAZEL S. MADDOX
 To be conveyed to:
 CITY OF NEWPORT NEWS, VIRGINIA
 DEPARTMENT OF PUBLIC UTILITIES
 LITTLE CREEK WATER PROJECT
 POWHATAN DISTRICT, JAMES CITY COUNTY, VIRGINIA
 Scale: 1" = 200' Date: October, 1970
 Dwg. # _____ Parcel # 22

OK