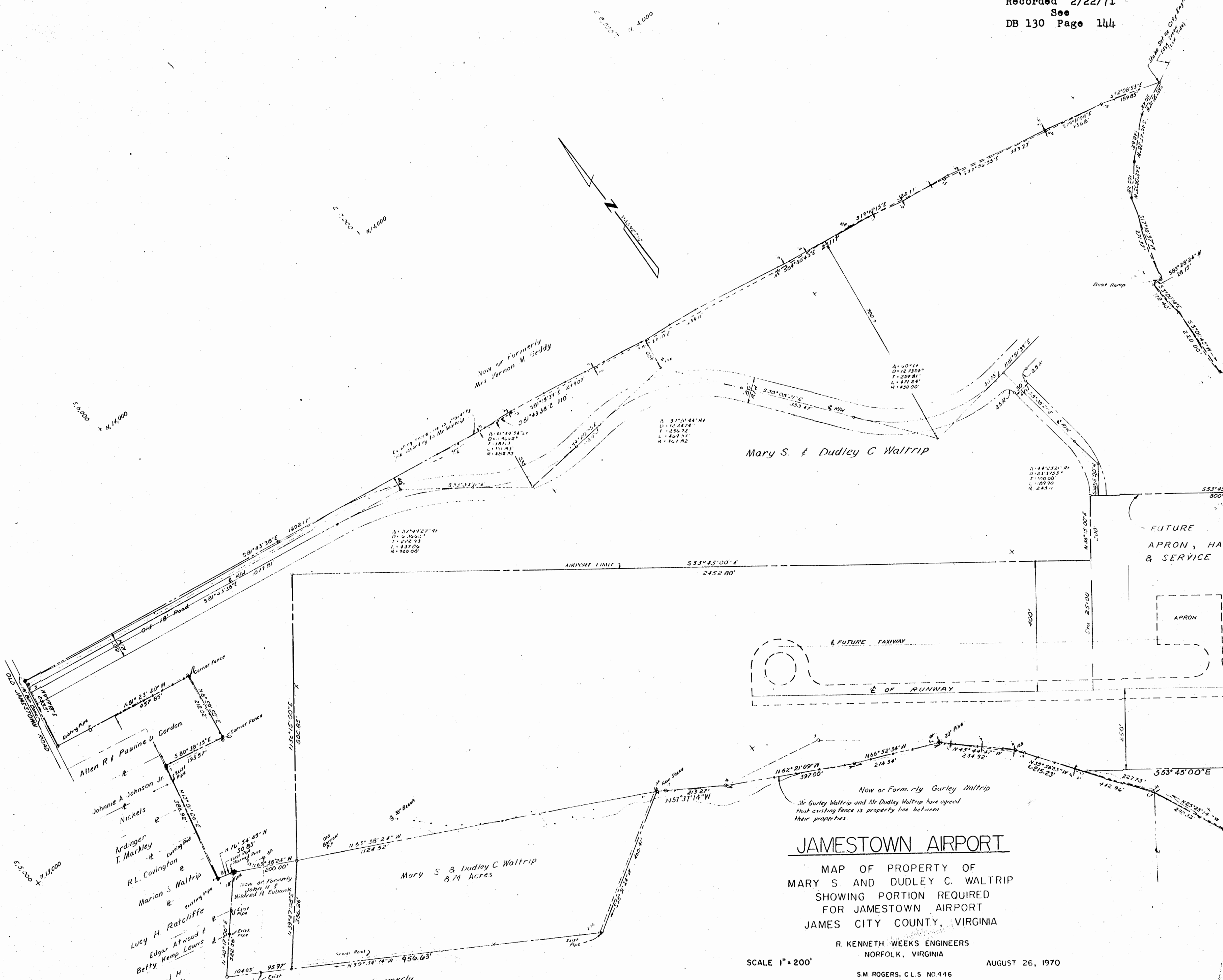


Recorded 2/22/71  
See  
DB 130 Page 144



### JAMESTOWN AIRPORT

MAP OF PROPERTY OF  
MARY S. AND DUDLEY C. WALTRIP  
SHOWING PORTION REQUIRED  
FOR JAMESTOWN AIRPORT  
JAMES CITY COUNTY, VIRGINIA

R. KENNETH WEEKS ENGINEERS  
NORFOLK, VIRGINIA

SCALE 1" = 200'

AUGUST 26, 1970

S.M. ROGERS; C.L.S. NO. 446