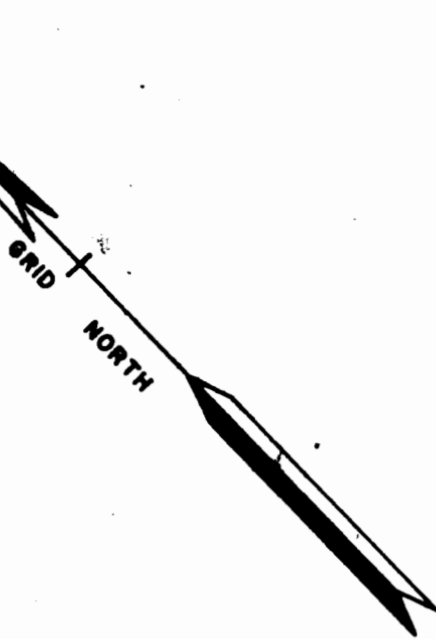


NOTE:
COORDINATES ARE IN FEET AND REFER
TO VIRGINIA STATE GRID, SOUTH ZONE.

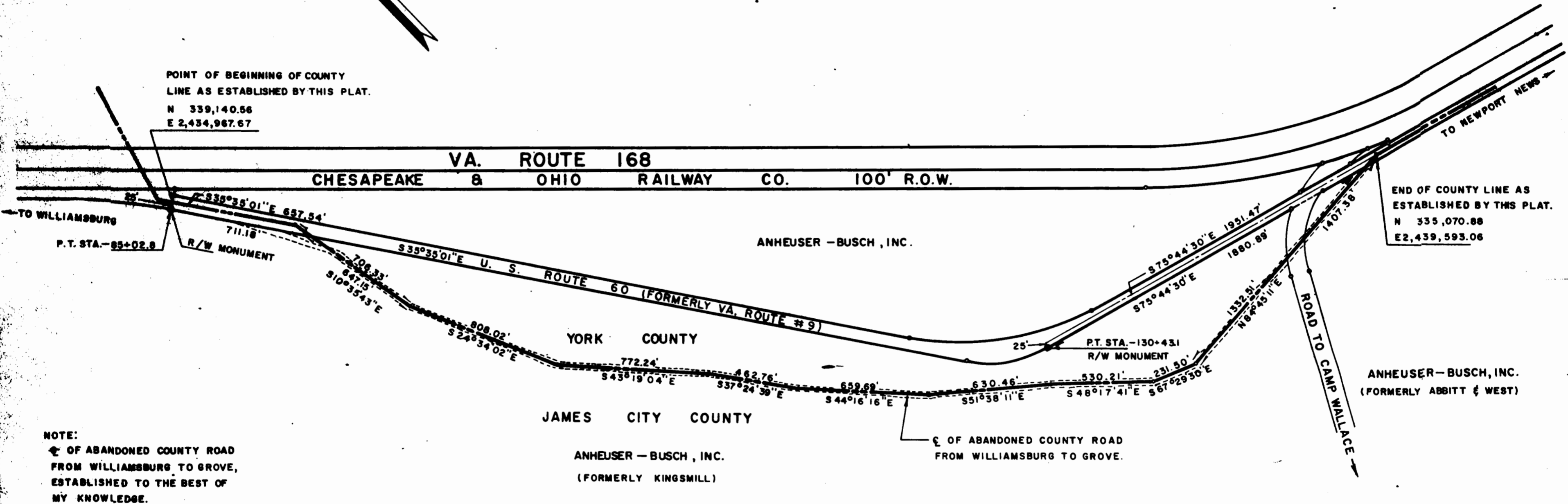


POINT OF BEGINNING OF COUNTY
LINE AS ESTABLISHED BY THIS PLAT.

N 339,140.88
E 2,434,967.67

END OF COUNTY LINE AS
ESTABLISHED BY THIS PLAT.

N 335,070.88
E 2,439,593.06



NOTE:
OF ABANDONED COUNTY ROAD
FROM WILLIAMSBURG TO GROVE,
ESTABLISHED TO THE BEST OF
MY KNOWLEDGE.



JAMES CITY COUNTY
ANHEUSER - BUSCH, INC.
(FORMERLY KINGSMILL)

ANHEUSER - BUSCH, INC.
(FORMERLY ABBITT & WEST)

PLAT SHOWING
LOCATION OF COUNTY LINE
(NEAR KINGSMILL POINT)

BETWEEN
JAMES CITY COUNTY AND YORK COUNTY,
VIRGINIA

SCALE: 1" = 400'
DECEMBER 7, 1970
BALDWIN AND GREGG
ENGINEERS - SURVEYORS - PLANNERS
NORFOLK, VIRGINIA

Recorded 12/8/70 J. C. Clotter, Clerk