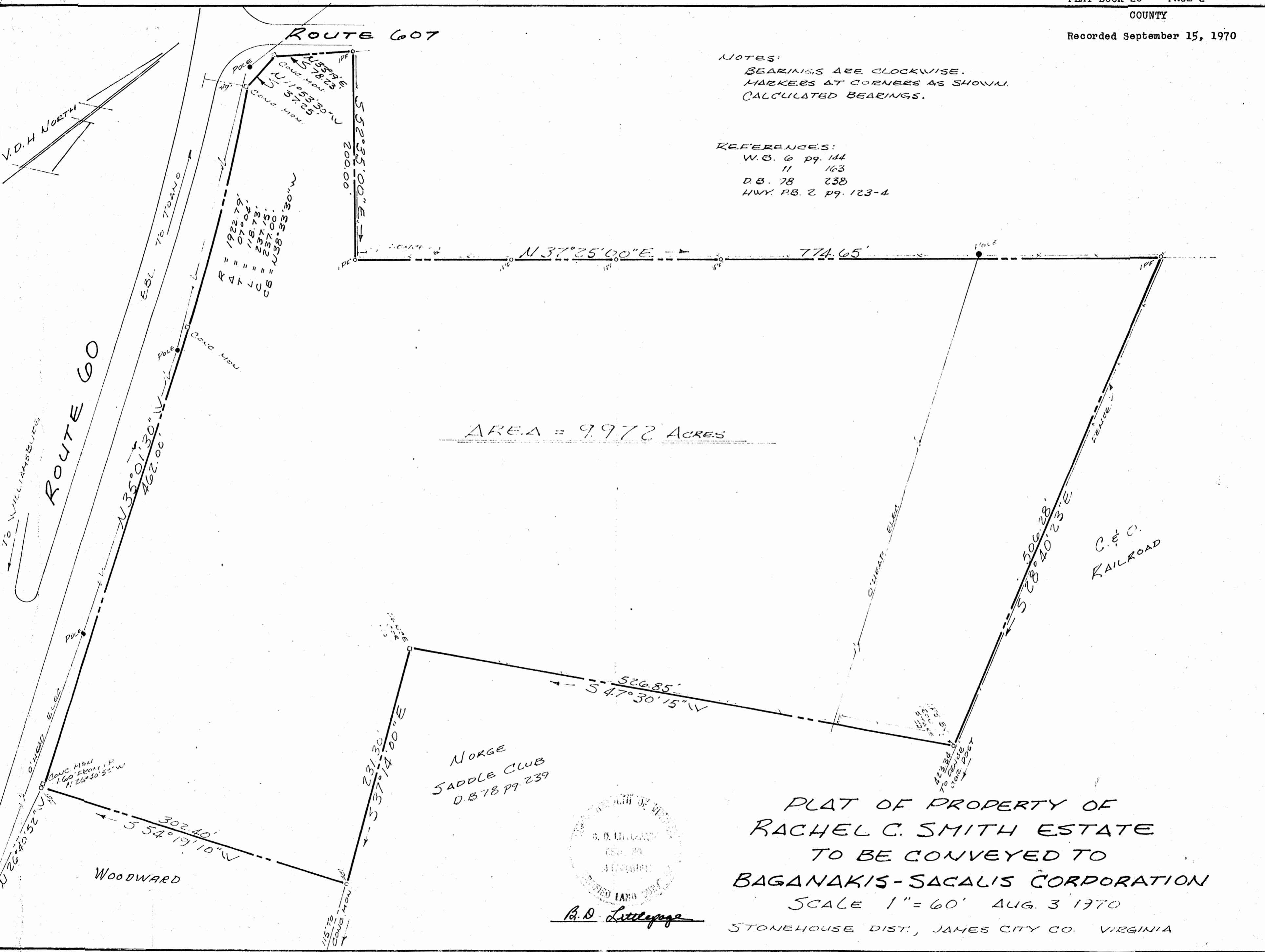


NOTES:
 BEARINGS ARE CLOCKWISE.
 MARKERS AT CORNERS AS SHOWN.
 CALCULATED BEARINGS.

REFERENCES:
 W.B. 6 pg. 144
 11 163
 D.B. 78 238
 HWY. P.B. 2 pg. 123-4



PLAT OF PROPERTY OF
 RACHEL C. SMITH ESTATE
 TO BE CONVEYED TO
 BAGANAKIS-SACALIS CORPORATION
 SCALE 1" = 60' AUG. 3 1970
 STONEHOUSE DIST., JAMES CITY CO. VIRGINIA

B. D. Littlepage