

I certify that this plat and subdivision was made by me at the direction of the owner, and that the subdivision is entirely within the boundaries of land covered by deeds duly of record in Clerk's Office of the Circuit Court of James City County in Deed Book 125 p. 101 and Deed Book 126 p. 183 and the Clerk's Office of the Circuit Court of York County in Deed Book 224 at p. 24. This subdivision as it appears on this plat conforms to the applicable regulations relating to the subdivision of land.

CURVE		DATA		
NO.	RADIUS	DELTA	TANGENT	LENGTH
1	597.96'	40°09'29"	218.57'	419.11'
2	573.75'	35°20'16"	182.76'	353.86'
3	776.78'	38°58'00"	274.82'	528.28'
4	2597.96'	2°40'48"	474.00'	957.69'

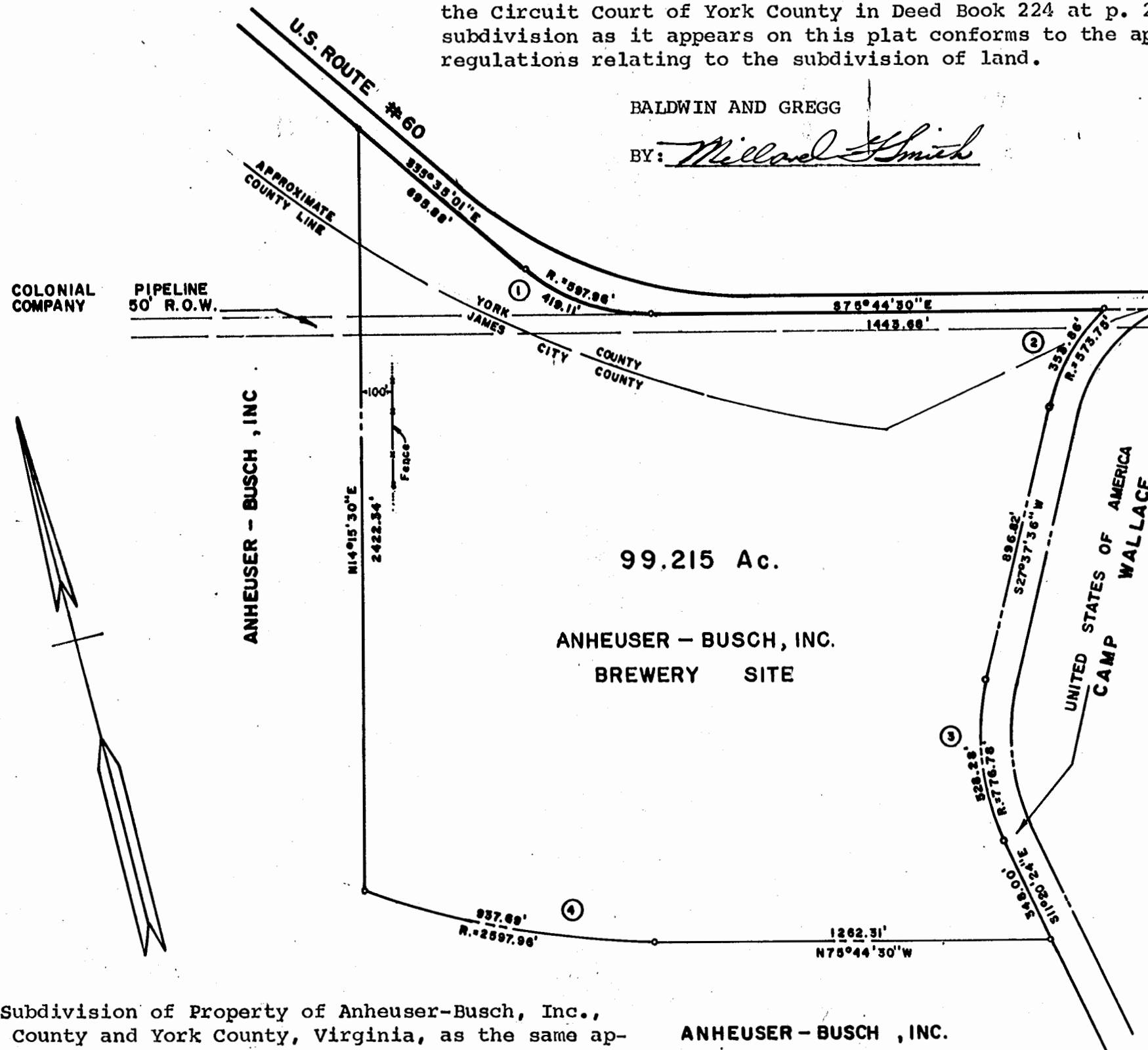
See
DB 126 Page 569
Recorded 6-15-70

BALDWIN AND GREGG

BY: *Millard Smith*

STATE OF *Missouri*
CITY OF *St. Louis*

TO WIT:



I, *Blanche Huff*, a Notary Public in and for the City and State aforesaid, do hereby certify that *John H. Pahlmann* and *John L. Hayward* whose names are signed to the foregoing writing bearing date on the *8th* day of *June*, 1970, have acknowledged the same before me in my city and state aforesaid.

Given unto my hand this *8th* day of *June*, 1970.

My commission expires on: *Aug. 9, 1970*

Blanche Huff
Notary Public

This Subdivision of Property of Anheuser-Busch, Inc., James City County and York County, Virginia, as the same appears on this plat is with the free consent and in accordance with the desires of the undersigned owner.

Attest: Anheuser-Busch, Inc.

John L. Hayward
Secretary

By *John H. Pahlmann*
Vice President

SUBDIVISION
OF PROPERTY OF
ANHEUSER - BUSCH, INC.
YORK COUNTY
AND
JAMES CITY COUNTY, VIRGINIA

SCALE: 1" = 400' MAY 26, 1970
BALDWIN AND GREGG
ENGINEERS - SURVEYORS - PLANNERS
NORFOLK, VIRGINIA