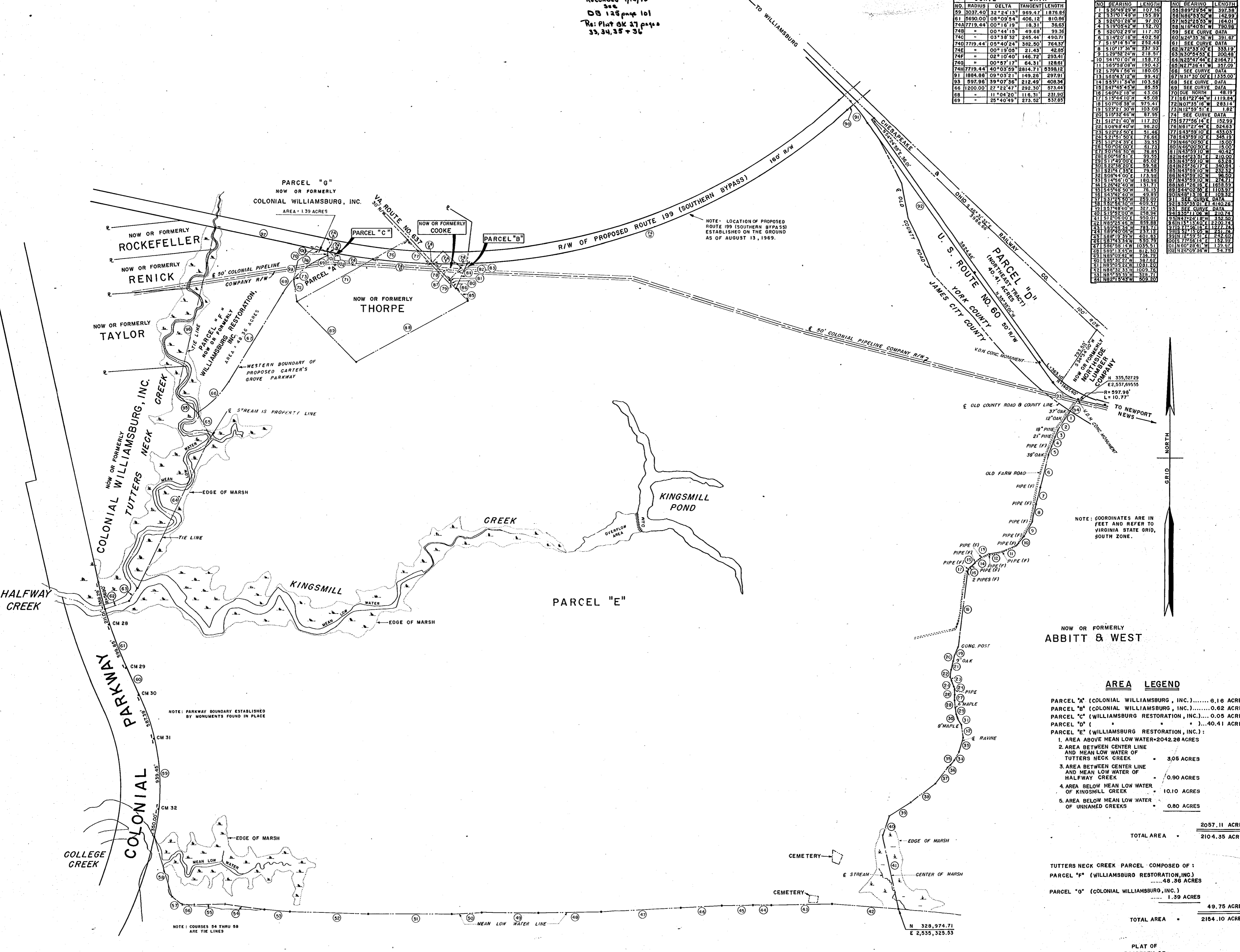


Recorded 1/15/70
see
DB 125 page 101
Re: Plat BK 37 pages
33, 34, 35 & 36

CURVE DATA			
NO.	RADIUS	DELTA	TANGENT LENGTH
59	3031.40	32°24'13"	969.47
61	5690.00	08°09'54"	408.12
74A	7719.44	00°16'19"	18.31
74B	"	00°44'15"	49.69
74C	"	03°38'32"	245.44
74D	7719.44	05°40'24"	382.50
74E	"	00°19'05"	21.43
74F	"	02°10'40"	146.72
74G	"	00°57'17"	64.31
74H	7719.44	40°03'59"	2814.71
91	1884.86	09°03'21"	149.26
93	597.96	39°07'36"	212.49
66	1200.00	27°22'47"	292.30
68	"	11°04'20"	116.31
69	"	29°40'49"	273.52

PROPERTY LINE DATA					
NO.	BEARING	LENGTH	NO.	BEARING	LENGTH
1	S36°49'29"W	107.36	95	S89°29'54"W	397.38
2	S31°01'49"W	155.89	96	S88°43'52"W	142.99
3	S28°01'28"W	97.20	97	N82°25'55"W	164.01
4	S19°02'22"W	112.70	98	N1°40'51"W	780.58
5	S20°02'29"W	117.70	99	SEE CURVE DATA	
6	S14°20'18"W	402.58	60	N24°35'36"W	391.67
7	S15°14'51"W	252.48	61	SEE CURVE DATA	
8	S10°17'34"W	231.93	62	N72°33'10"E	335.19
9	S29°52'24"W	218.51	63	N30°54'53"E	200.48
10	S41°01'01"W	158.73	64	N25°47'44"E	2164.71
11	S69°38'08"W	190.43	65	N27°36'41"W	357.09
12	S79°17'58"W	180.05	66	SEE CURVE DATA	
13	S65°43'12"W	99.42	67	N31°30'00"E	1332.00
14	S55°11'34"W	103.58	68	SEE CURVE DATA	
15	S47°45'45"W	85.55	69	SEE CURVE DATA	
16	S40°42'18"W	43.08	70	DUE NORTH	48.19
17	S19°44'10"W	45.08	71	S61°27'44"W	1119.84
18	S07°08'38"W	975.41	72	N07°35'16"W	283.14
19	S29°21'30"W	103.08	73	N12°59'51"E	1.82
20	S12°52'46"W	87.95	74	SEE CURVE DATA	
21	S12°21'40"W	117.20	75	S77°56'14"E	152.99
22	S08°48'40"W	96.20	76	N61°27'44"E	624.63
23	S22°25'50"E	51.46	77	S45°59'10"E	433.03
24	S21°15'50"E	76.66	78	S39°59'10"E	346.19
25	S12°24'39"E	39.33	79	N46°00'00"E	15.00
26	S07°05'00"E	61.73	80	N46°00'00"E	15.00
27	S01°46'50"W	76.84	81	N45°10'10"W	46.42
28	S00°58'51"E	93.53	82	N44°23'51"E	210.00
29	S1°40'00"E	85.02	83	N43°55'10"W	63.28
30	S2°38'20"E	59.48	84	N23°55'10"E	340.84
31	S21°41'35"E	79.69	85	N43°55'10"W	232.32
32	S08°44'00"E	173.38	86	N43°55'10"W	96.50
33	S14°56'10"W	180.39	87	N43°55'10"W	274.71
34	S26°42'40"W	131.71	88	N43°55'10"E	1858.99
35	S43°42'40"W	76.12	89	S43°55'10"E	1103.97
36	S43°42'40"W	49.89	90	N45°13'16"E	103.32
37	S37°48'40"W	327.15	91	SEE CURVE DATA	
38	S19°52'00"W	556.34	92	N32°11'06"W	210.74
39	S15°52'00"E	599.01	93	SEE CURVE DATA	
40	S15°52'00"E	599.01	94	N32°11'06"E	210.74
41	S15°52'00"E	599.01	95	N15°11'40"E	2200.74
42	N85°22'46"W	659.88	96	N15°11'40"E	1127.74
43	S89°46'50"W	784.71	97	N15°11'40"E	1242.80
44	S89°46'50"W	784.71	98	N15°11'40"E	1242.80
45	S89°46'50"W	784.71	99	N15°11'40"E	1242.80
46	S89°46'50"W	784.71	100	N15°11'40"E	1242.80
47	S89°46'50"W	784.71	101	N15°11'40"E	1242.80
48	S89°46'50"W	784.71	102	N15°11'40"E	1242.80
49	S89°46'50"W	784.71	103	N15°11'40"E	1242.80
50	S89°46'50"W	784.71	104	N15°11'40"E	1242.80
51	S89°46'50"W	784.71	105	N15°11'40"E	1242.80
52	S89°46'50"W	784.71	106	N15°11'40"E	1242.80
53	S89°46'50"W	784.71	107	N15°11'40"E	1242.80
54	S89°46'50"W	784.71	108	N15°11'40"E	1242.80
55	S89°46'50"W	784.71	109	N15°11'40"E	1242.80
56	S89°46'50"W	784.71	110	N15°11'40"E	1242.80
57	S89°46'50"W	784.71	111	N15°11'40"E	1242.80
58	S89°46'50"W	784.71	112	N15°11'40"E	1242.80
59	S89°46'50"W	784.71	113	N15°11'40"E	1242.80

NOTE: LOCATION OF PROPOSED ROUTE 199 (SOUTHERN BYPASS) ESTABLISHED ON THE GROUND AS OF AUGUST 13, 1969.



NOTE: COORDINATES ARE IN FEET AND REFER TO VIRGINIA STATE GRID, SOUTH ZONE.

NOW OR FORMERLY ABBITT & WEST

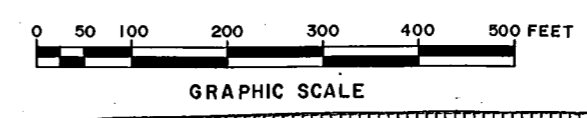
AREA LEGEND

- PARCEL "A" (COLONIAL WILLIAMSBURG, INC.).....6.16 ACRES
- PARCEL "B" (COLONIAL WILLIAMSBURG, INC.).....0.62 ACRES
- PARCEL "C" (WILLIAMSBURG RESTORATION, INC.)....0.05 ACRES
- PARCEL "D" (.....).....40.41 ACRES
- PARCEL "E" (WILLIAMSBURG RESTORATION, INC.):
 - 1. AREA ABOVE MEAN LOW WATER-2042.28 ACRES
 - 2. AREA BETWEEN CENTER LINE AND MEAN LOW WATER OF TUTTERS NECK CREEK 3.05 ACRES
 - 3. AREA BETWEEN CENTER LINE AND MEAN LOW WATER OF HALFWAY CREEK 0.90 ACRES
 - 4. AREA BELOW MEAN LOW WATER OF KINGSMILL CREEK 10.10 ACRES
 - 5. AREA BELOW MEAN LOW WATER OF UNNAMED CREEKS 0.80 ACRES

TOTAL AREA 2057.11 ACRES
TOTAL AREA 2104.35 ACRES

TUTTERS NECK CREEK PARCEL COMPOSED OF:
PARCEL "F" (WILLIAMSBURG RESTORATION, INC.)48.36 ACRES
PARCEL "G" (COLONIAL WILLIAMSBURG, INC.) 1.39 ACRES
TOTAL AREA 49.75 ACRES
TOTAL AREA 2164.10 ACRES

PLAT OF PROPERTY OF
WILLIAMSBURG RESTORATION, INC.
AND
COLONIAL WILLIAMSBURG, INC.
YORK COUNTY, VIRGINIA
AND
JAMES CITY COUNTY, VIRGINIA
TO BE CONVEYED TO
ANHEUSER-BUSCH, INC.
SCALE: 1" = 400' DECEMBER 31, 1969



JAMES RIVER