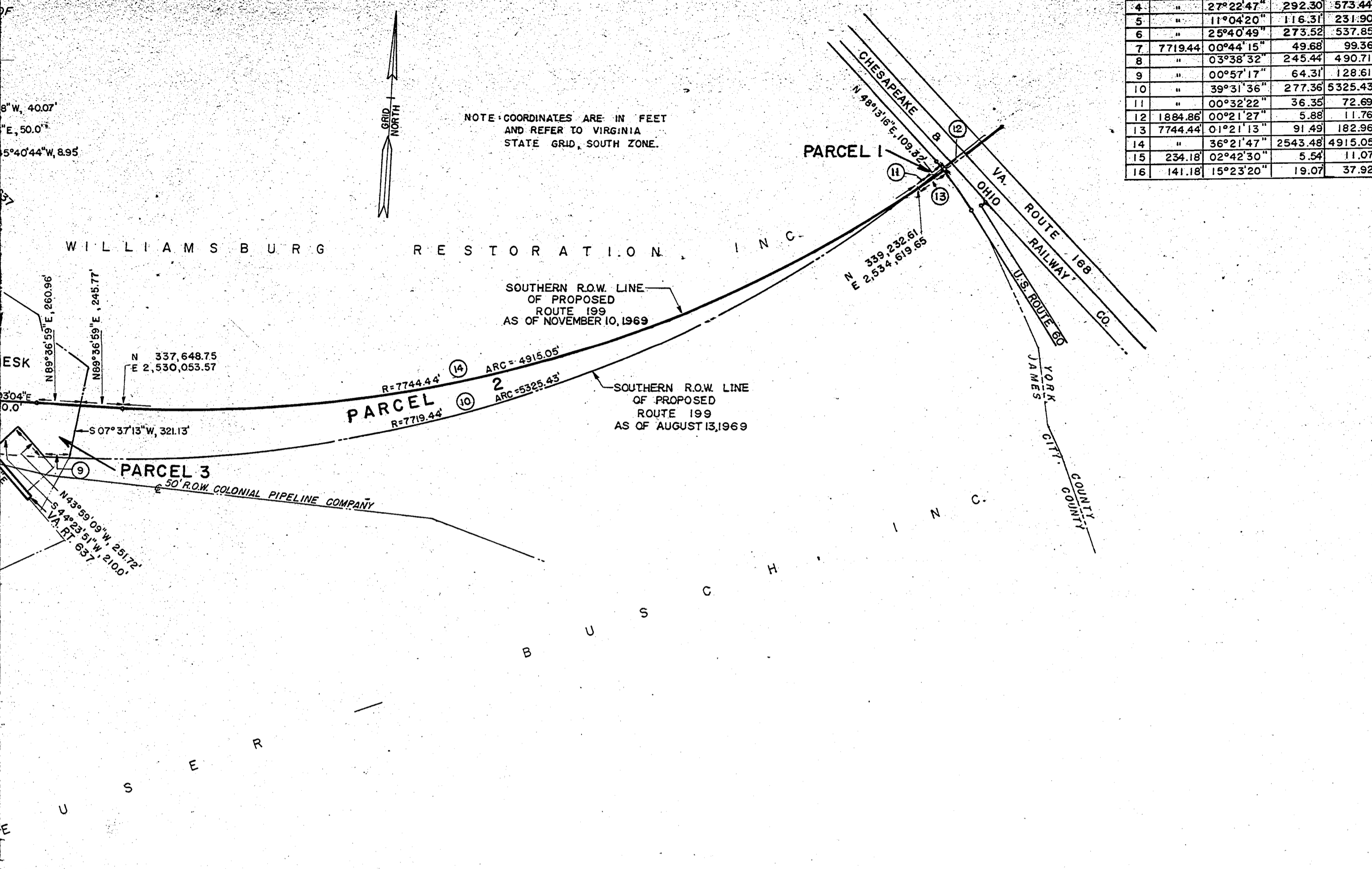


RECORDED APRIL 30, 1970
SEE
PAGE 183

RECORDED APRIL 30, 1970
SEE
DB 126 PAGE 183

CURVE DATA				
NO.	RADIUS	DELTA	TANGENT	ARC
1	5690.00	03°36'28"	179.20	358.29
2	600.00	87°20'00"	572.70	914.55
3	1200.00	08°47'13"	92.20	184.03
4	"	27°22'47"	292.30	573.44
5	"	11°04'20"	116.31	231.90
6	"	25°40'49"	273.52	537.85
7	7719.44	00°44'15"	49.68	99.36
8	"	03°38'32"	245.44	490.71
9	"	00°57'17"	64.31	128.61
10	"	39°31'36"	277.36	5325.43
11	"	00°32'22"	36.35	72.69
12	1884.86	00°21'27"	5.88	11.76
13	7744.44	01°21'13"	91.49	182.96
14	"	36°21'47"	2543.48	4915.05
15	234.18	02°42'30"	5.54	11.07
16	141.18	15°23'20"	19.07	37.92



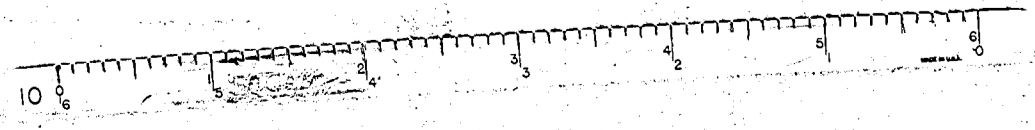
AREA LEGEND

- PARCELS TO BE CONVEYED TO ANHEUSER-BUSCH, INC.
- PARCEL 2 (FROM WILLIAMSBURG RESTORATION, INC.) = 20.56 ACRES
 - PARCEL 3 (FROM COLONIAL WILLIAMSBURG, INC.) = 3.71 ACRES
 - PARCEL 4 (" " ") = 3.73 ACRES
 - PARCEL 6 (" WILLIAMSBURG RESTORATION, INC.) = 0.19 ACRES
- PARCELS TO BE CONVEYED BY ANHEUSER-BUSCH, INC.
- PARCEL 1 (FORMERLY WILLIAMSBURG RESTORATION, INC.) = 0.03 ACRES
 - PARCEL 11 (FORMERLY RENICK) = 17.12 ACRES
(0.20 ACRES BETWEEN M.L.W. LINE AND ♁ TUTTERS NECK CREEK)
 - PARCEL 13 (FORMERLY TAYLOR) = 24.88 ACRES
(0.46 ACRES BETWEEN M.L.W. LINE AND ♁ TUTTERS NECK CREEK)
- PARCELS NOT CONVEYED
- PARCEL 5 (COLONIAL WILLIAMSBURG, INC.) = 0.10 ACRES
 - PARCEL 7 (WILLIAMSBURG RESTORATION, INC.) = 0.84 ACRES
 - PARCEL 8 (" " ") = 0.35 ACRES *
 - PARCEL 9 (FORMERLY RENICK) = 5.28 ACRES
 - PARCEL 10 (ANHEUSER-BUSCH, INC.) = 3.07 ACRES
 - PARCEL 12 (" " ") = 12.76 ACRES
 - PARCEL 14 (WILLIAMSBURG RESTORATION, INC.) = 48.01 ACRES
(1.35 ACRES BETWEEN M.L.W. LINE AND ♁ TUTTERS NECK CREEK)
 - PARCEL 15 (COLONIAL WILLIAMSBURG, INC.) = 11.50 ACRES
(0.44 ACRES BETWEEN M.L.W. LINE AND ♁ TUTTERS NECK CREEK)
 - PARCEL 16 (COLONIAL WILLIAMSBURG, INC.) = 65.30 ACRES
(4.06 ACRES BETWEEN M.L.W. LINE AND ♁ TUTTERS NECK CREEK)

NOTE: ACREAGE OF PARCELS BORDERING TUTTERS NECK CREEK INCLUDES THE ACREAGE BETWEEN M.L.W. LINE AND ♁ OF TUTTERS NECK CREEK.

* - ACREAGE BETWEEN M.L.W. AND ♁ TUTTERS NECK CREEK IS NEGLIGIBLE

PLAT SHOWING
SOUTHERN RIGHT OF WAY LINE -
(FROM COLONIAL PARKWAY EAST TO ROUTE 60)
OF
PROPOSED VIRGINIA ROUTE 199
AS ESTABLISHED NOVEMBER 10, 1969



JAMES CITY COUNTY, VIRGINIA
SCALE: 1" = 400' FEBRUARY 12, 1970

BALDWIN AND GREGG
ENGINEERS - SURVEYORS - PLANNERS
NORFOLK, VIRGINIA