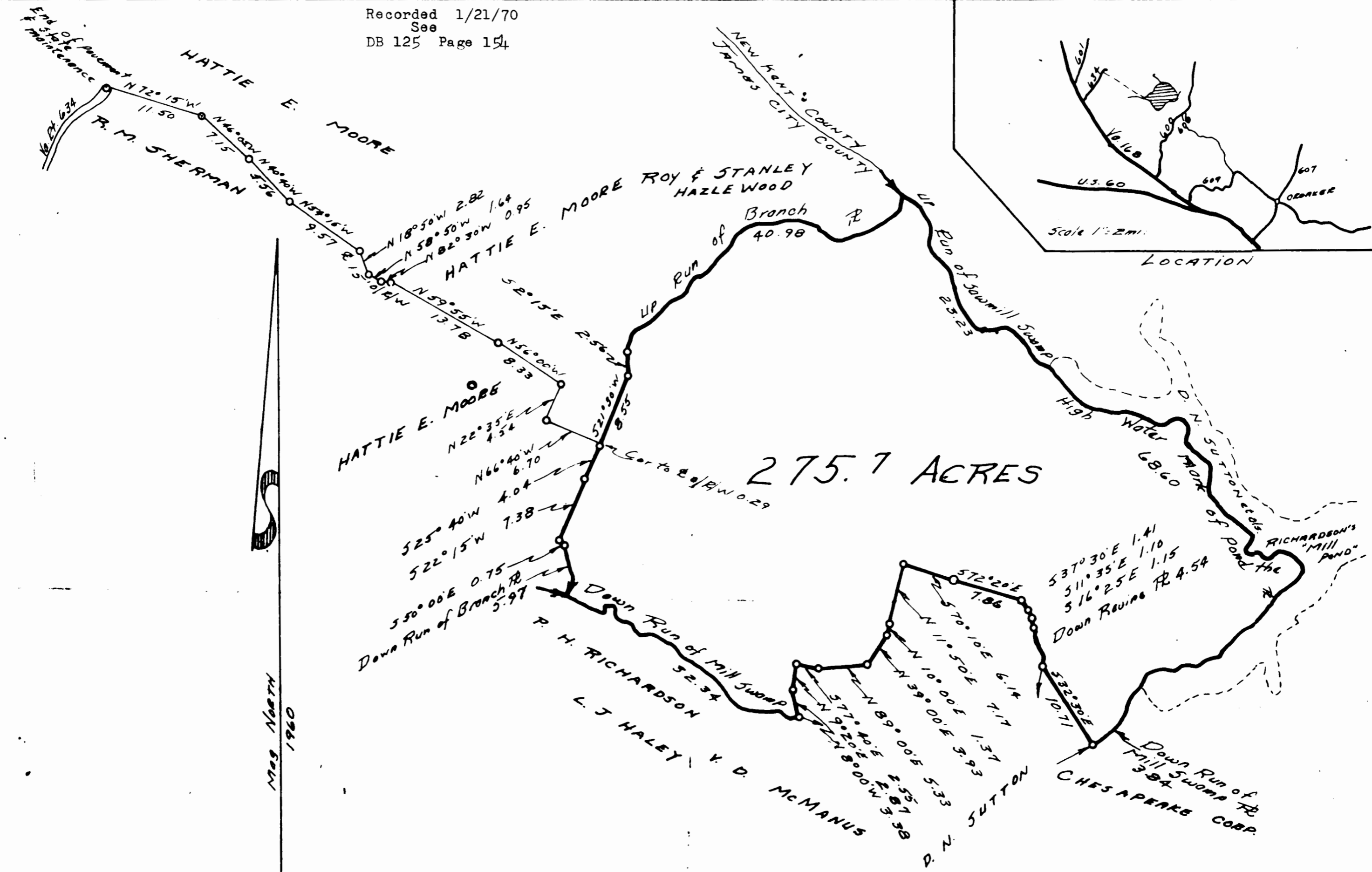
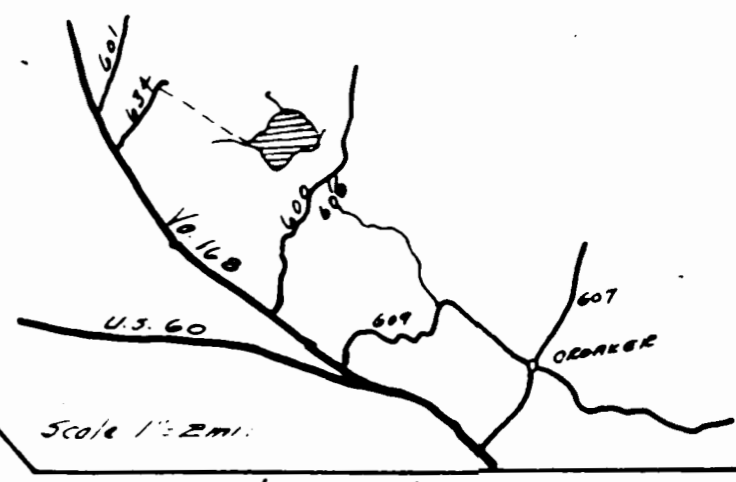


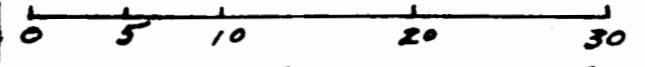
Recorded 1/21/70  
See  
DB 125 Page 154



275.7 ACRES

CONTINENTAL CAN COMPANY INC. No. 34-77L  
LAYFIELD-THOMAS OR POND TRACT - PARCEL No. 27  
275.7 ACRES  
STONE HOUSE DISTRICT - JAMES CITY COUNTY  
VIRGINIA

SCALE: 1 Inch = 10 Chains



Surveyed June, 1960 C. C. Williams C.L.S. No. Reg No 371

C & W PARCEL No. 27

Mag North  
1960