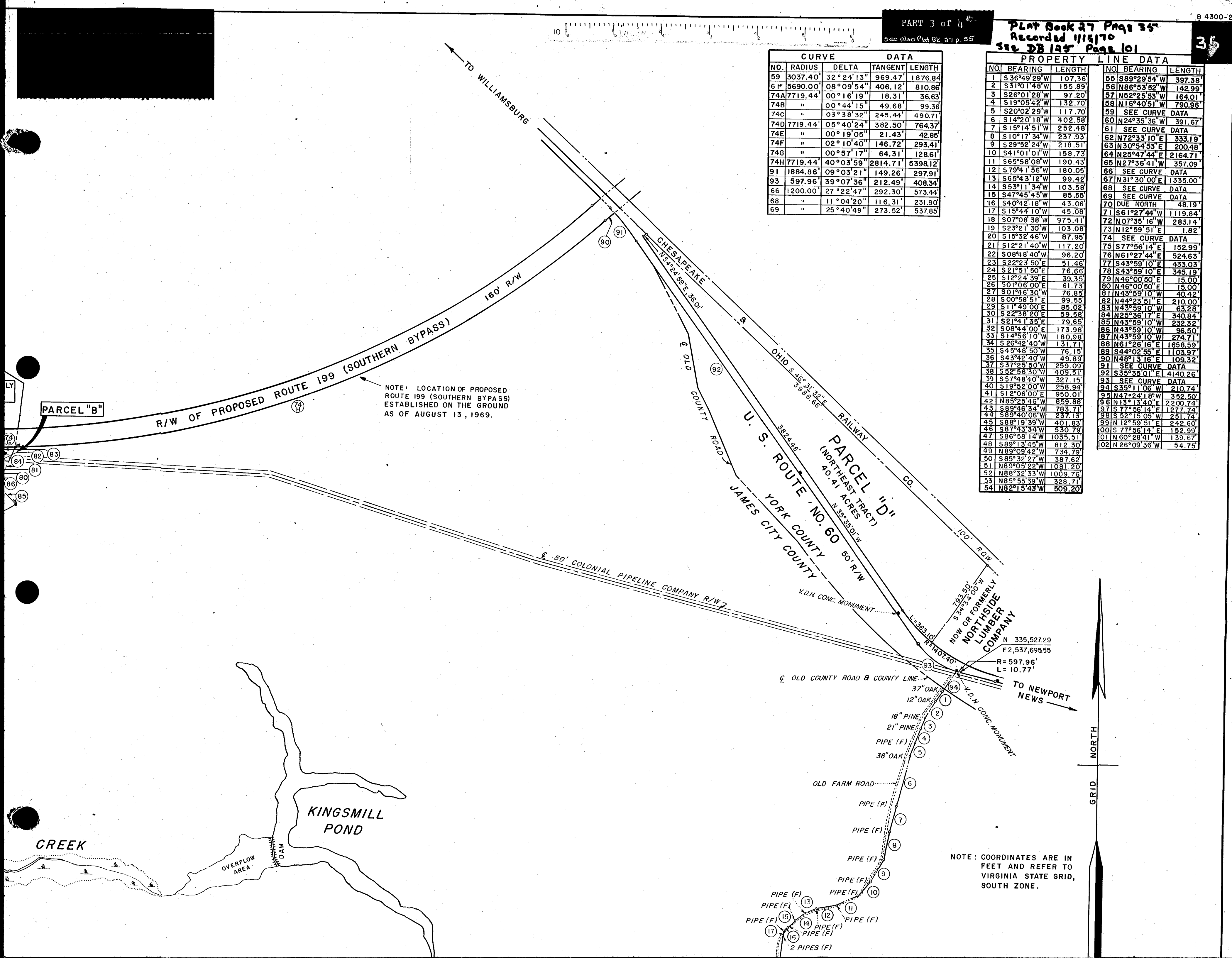


CURVE DATA				
NO.	RADIUS	DELTA	TANGENT	LENGTH
59	3037.40'	32°24'13"	969.47'	1876.84'
61	5690.00'	08°09'54"	406.12'	810.86'
74A	7719.44'	00°16'19"	18.31'	36.63'
74B	"	00°44'15"	49.68'	99.36'
74C	"	03°38'32"	245.44'	490.71'
74D	7719.44'	05°40'24"	382.50'	764.37'
74E	"	00°19'05"	21.43'	42.85'
74F	"	02°10'40"	146.72'	293.41'
74G	"	00°57'17"	64.31'	128.61'
74H	7719.44'	40°03'59"	2814.71'	5398.12'
91	1884.86'	09°03'21"	149.26'	297.91'
93	597.96'	39°07'36"	212.49'	408.34'
66	1200.00'	27°22'47"	292.30'	573.44'
68	"	11°04'20"	116.31'	231.90'
69	"	25°40'49"	273.52'	537.85'

PROPERTY LINE DATA					
NO.	BEARING	LENGTH	NO.	BEARING	LENGTH
1	S 36°49'29"W	107.36'	55	S 89°29'54"W	397.38'
2	S 31°01'48"W	155.89'	56	N 86°53'52"W	142.99'
3	S 26°01'28"W	97.20'	57	N 52°25'53"W	164.01'
4	S 19°05'42"W	132.70'	58	N 16°40'51"W	790.96'
5	S 20°02'29"W	117.70'	59	SEE CURVE DATA	
6	S 14°20'18"W	402.58'	60	N 24°35'36"W	391.67'
7	S 15°14'51"W	252.48'	61	SEE CURVE DATA	
8	S 10°17'34"W	237.93'	62	N 72°33'10"E	333.19'
9	S 29°52'24"W	218.51'	63	N 30°54'53"E	200.48'
10	S 41°01'01"W	158.73'	64	N 25°47'44"E	2164.71'
11	S 65°58'08"W	190.43'	65	N 27°36'41"W	357.09'
12	S 79°41'56"W	180.05'	66	SEE CURVE DATA	
13	S 65°43'12"W	99.42'	67	N 31°30'00"E	1335.00'
14	S 53°11'34"W	103.58'	68	SEE CURVE DATA	
15	S 47°45'45"W	85.55'	69	SEE CURVE DATA	
16	S 40°42'18"W	43.06'	70	DUE NORTH	48.19'
17	S 15°44'10"W	45.08'	71	S 61°27'44"W	1119.84'
18	S 07°08'38"W	975.41'	72	N 07°35'16"W	283.14'
19	S 23°21'30"W	103.08'	73	N 12°59'51"E	1.82'
20	S 15°32'46"W	87.95'	74	SEE CURVE DATA	
21	S 12°21'40"W	117.20'	75	S 77°56'14"E	152.99'
22	S 08°48'40"W	96.20'	76	N 61°27'44"E	524.63'
23	S 22°23'50"E	51.46'	77	S 43°59'10"E	433.03'
24	S 21°51'50"E	76.66'	78	S 43°59'10"E	345.19'
25	S 12°24'39"E	39.35'	79	N 46°00'50"E	15.00'
26	S 01°06'00"E	61.73'	80	N 46°00'50"E	15.00'
27	S 01°46'30"W	76.85'	81	N 43°59'10"W	40.42'
28	S 00°58'51"E	99.55'	82	N 44°23'51"E	210.00'
29	S 11°49'00"E	85.02'	83	N 43°59'10"W	63.28'
30	S 22°38'20"E	59.58'	84	N 25°36'17"E	340.84'
31	S 21°41'35"E	79.65'	85	N 43°59'10"W	232.32'
32	S 08°44'00"E	173.98'	86	N 43°59'10"W	96.50'
33	S 14°56'10"W	180.98'	87	N 43°59'10"W	274.71'
34	S 26°42'40"W	131.71'	88	N 61°26'16"E	1658.59'
35	S 45°48'50"W	76.15'	89	S 44°02'55"E	1103.97'
36	S 43°42'40"W	49.89'	90	N 48°13'16"E	109.32'
37	S 37°25'50"W	259.09'	91	SEE CURVE DATA	
38	S 52°56'30"W	409.51'	92	S 35°35'01"E	4140.26'
39	S 57°48'40"W	327.15'	93	SEE CURVE DATA	
40	S 19°52'00"W	258.94'	94	S 35°11'06"W	210.74'
41	S 12°06'00"E	950.01'	95	N 47°24'18"W	352.50'
42	N 85°25'46"W	859.88'	96	N 13°13'40"E	2200.74'
43	S 89°46'34"W	783.71'	97	S 77°56'14"E	1277.74'
44	S 89°40'06"W	237.13'	98	S 52°15'05"W	251.74'
45	S 88°19'39"W	401.83'	99	N 12°59'51"E	242.60'
46	S 87°43'34"W	530.79'	100	S 77°56'14"E	152.99'
47	S 86°58'14"W	1035.51'	101	N 60°28'41"W	139.67'
48	S 89°13'45"W	812.30'	102	N 26°09'36"W	54.75'
49	N 89°09'42"W	734.79'			
50	S 85°32'27"W	387.62'			
51	N 89°05'22"W	1081.20'			
52	N 88°32'33"W	1009.76'			
53	N 85°55'39"W	328.71'			
54	N 82°15'43"W	509.20'			



NOTE: LOCATION OF PROPOSED ROUTE 199 (SOUTHERN BYPASS) ESTABLISHED ON THE GROUND AS OF AUGUST 13, 1969.

NOTE: COORDINATES ARE IN FEET AND REFER TO VIRGINIA STATE GRID, SOUTH ZONE.