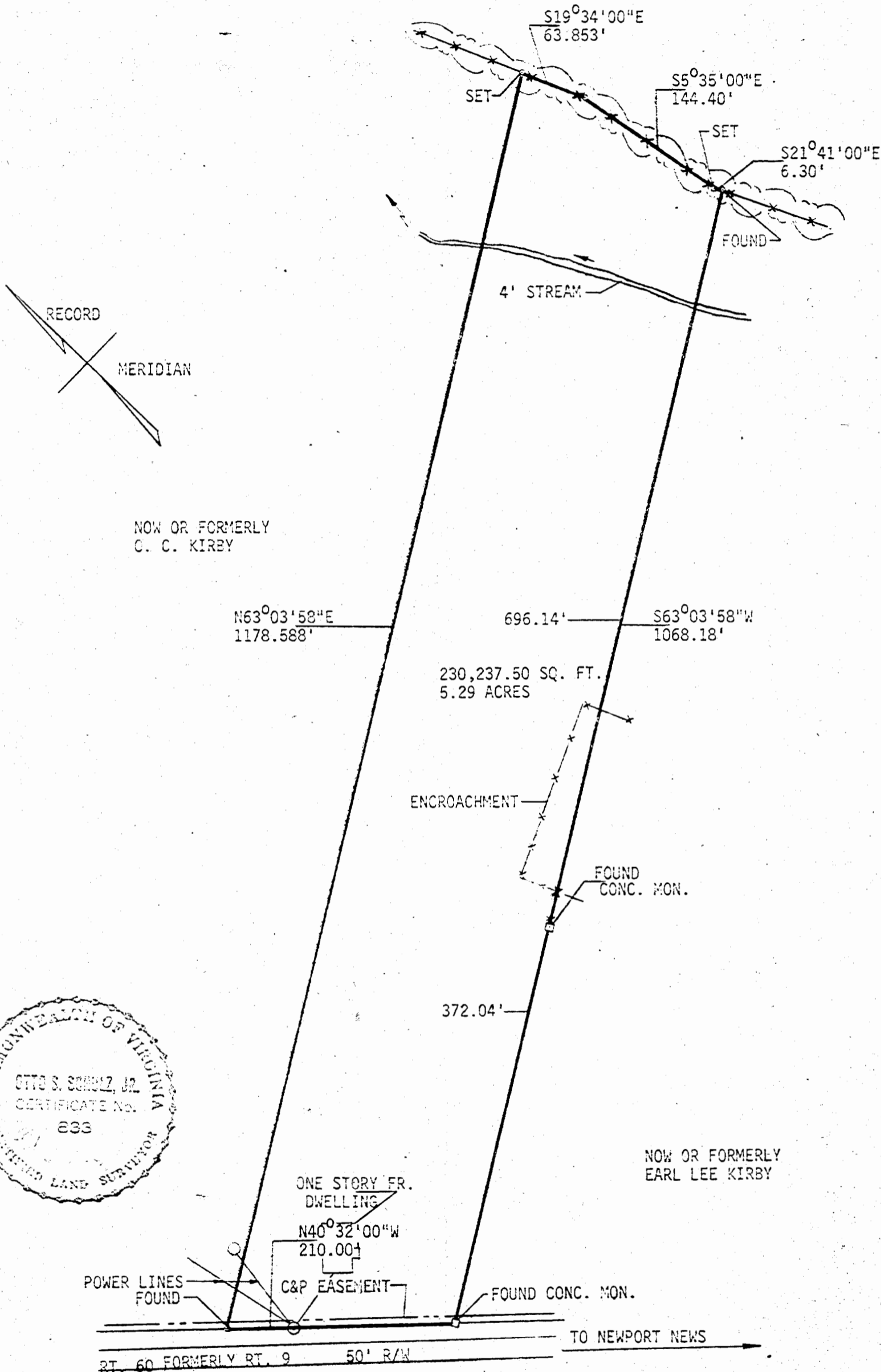


Recorded 12/24/69

See DB 124 Page 571

NOW OR FORMERLY T. CURTIS



*REF: DB 37/587, 37/87, 24/34, 100/671

L. V. WOODSON & ASSOCIATES ENGINEERS & SURVEYORS, P. O. BOX 633 WILLIAMSBURG, VIRGINIA 23185

LEGEND ● = IP = IRON PIN, □ = MON = MONUMENT, — = PROPERTY LINE, - - - = CENTERLINE, - - - - = EASEMENT LINE

A SURVEY FOR CONVEYANCE - JOSIEPHINE MAUD KIRBY TO CARLTON T. & JUDITH H. HALL
5.29 ACRES LYING IN ROBERTS DISTRICT, JAMES CITY COUNTY, VIRGINIA

SCALE: 1"=100' REF: * CLOSURE -- J. O. 257 DATE 12-12-69 AREA 5.29 AC.