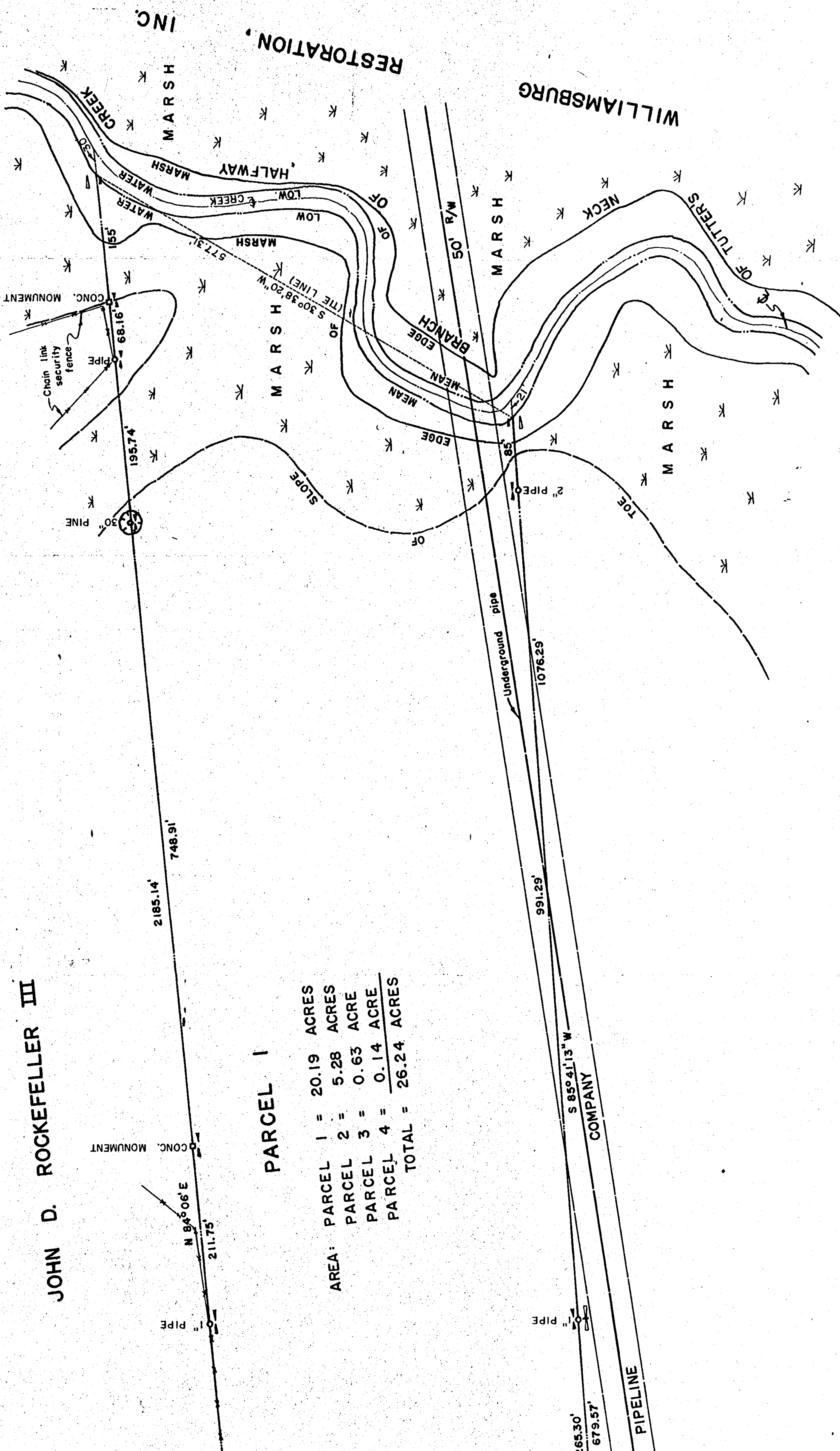


Recorded December 22, 1969  
see  
D. B. 124, page 535



JOHN D. ROCKEFELLER III

PARCEL I

AREA: PARCEL 1 =	20.19 ACRES
PARCEL 2 =	5.28 ACRES
PARCEL 3 =	0.63 ACRE
PARCEL 4 =	0.14 ACRE
TOTAL =	26.24 ACRES

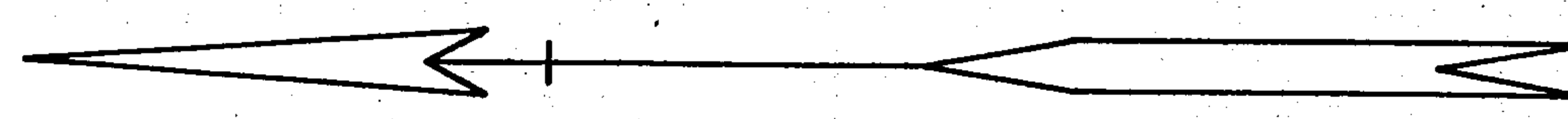
JOHN M. TAYLOR, et al

WILLIAMSBURG, INC.

Notes:

Renick's deed (D.B. 30, P.1) calls for his eastern line to be a branch of Halfway Creek which we interpret as Mean Low Water and have shown it as such; however, the actual points of Mean Low Water will change due to erosion and/or accretion.

The area between Mean Low Water and the center line of Tutter's Neck Branch of Halfway Creek from the north line to the south line of Renick's property is 0.20 acre.



PLAT OF PROPERTY OF  
**DEWEY C. RENICK, et al**  
 JAMESTOWN DISTRICT  
 JAMES CITY COUNTY, VIRGINIA  
 TO BE CONVEYED TO  
**ANHEUSER-BUSCH, INC.**  
 NOVEMBER 14, 1969

SCALE: 1" = 100'  
**BALDWIN AND GREGG**  
 ENGINEERS-SURVEYORS-PLANNERS  
 NORFOLK, VIRGINIA

