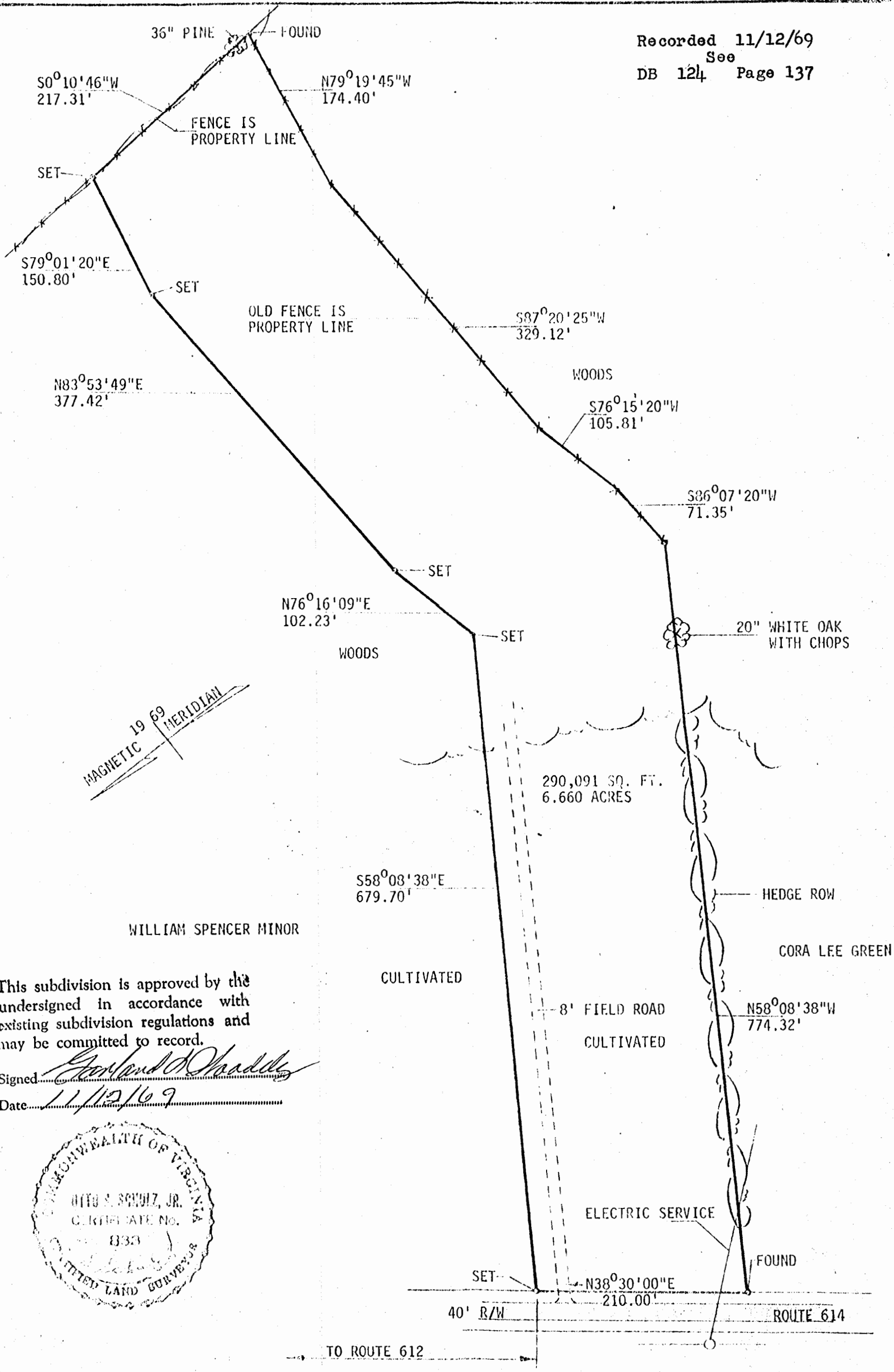


Recorded 11/12/69
 See DB 124 Page 137



MAGNETIC 19 69 MERIDIAN

WILLIAM SPENCER MINOR

This subdivision is approved by the undersigned in accordance with existing subdivision regulations and may be committed to record.

Signed *Garland D. Chaddler*
 Date 11/12/69



CULTIVATED

290,091 SQ. FT.
 6.660 ACRES

8' FIELD ROAD
 CULTIVATED

ELECTRIC SERVICE

HEDGE ROW

CORA LEE GREEN

N58°08'38"W
 774.32'

40' R/W
 N38°30'00"E
 210.00'
 ROUTE 614

TO ROUTE 612

L. V. WOODSON & ASSOCIATES ENGINEERS & SURVEYORS, P. O. BOX 633 WILLIAMSBURG, VIRGINIA 23185

LEGEND ○ = IP = IRON PIN, □ = MON = MONUMENT, ——— PROPERTY LINE, - - - CENTERLINE, - - - EASEMENT LINE

A SURVEY FOR CONVEYANCE - WILLIAM SPENCER MINOR ET UX TO WILLIAM M. LEE
 PART OF THE GEORGE W. MINOR TRACT LYING IN BERKELEY DISTRICT.
 JAMES CITY COUNTY, VIRGINIA

SCALE 1"=100' REF: 21/481 CLOSURE 1/15M J. O. 236 DATE 9-27-69 AREA 6.660 AC.