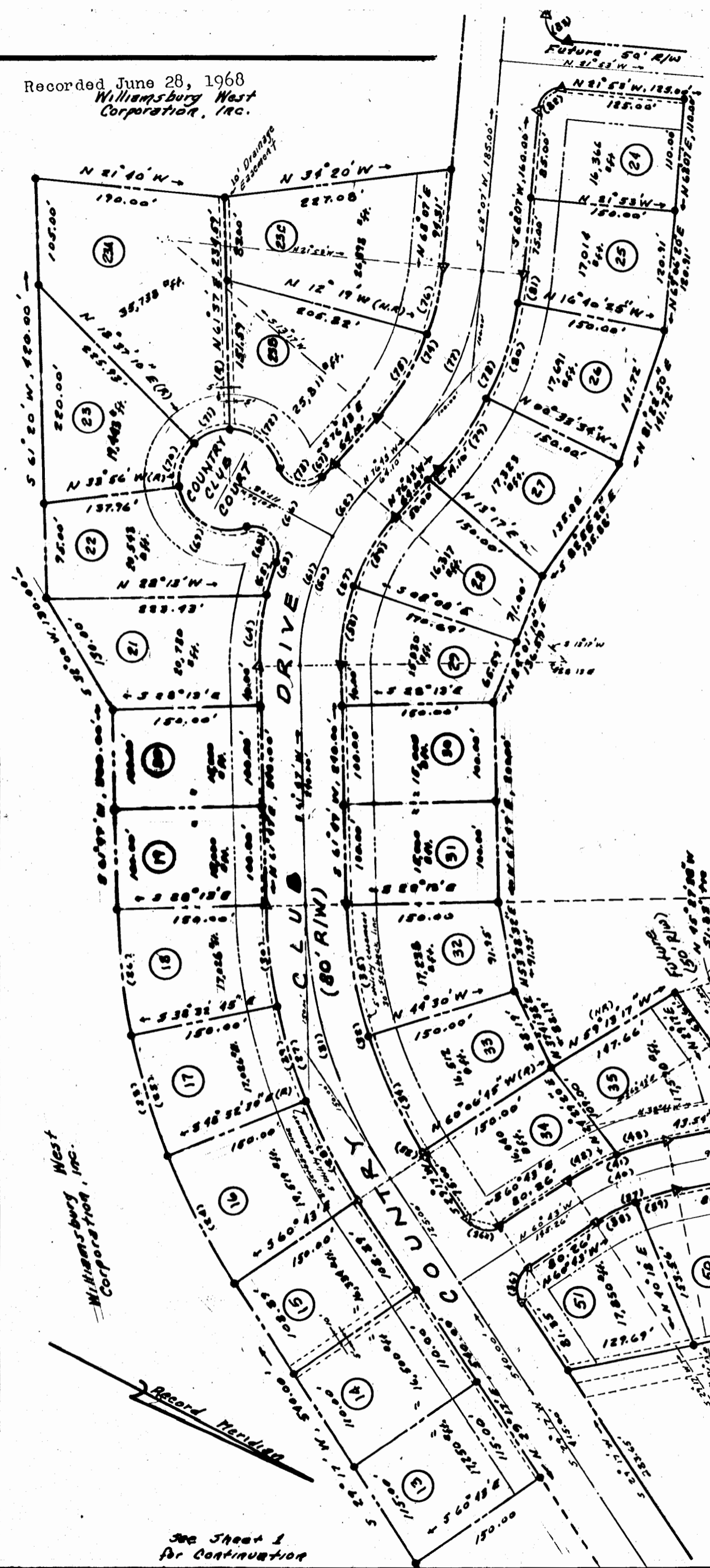
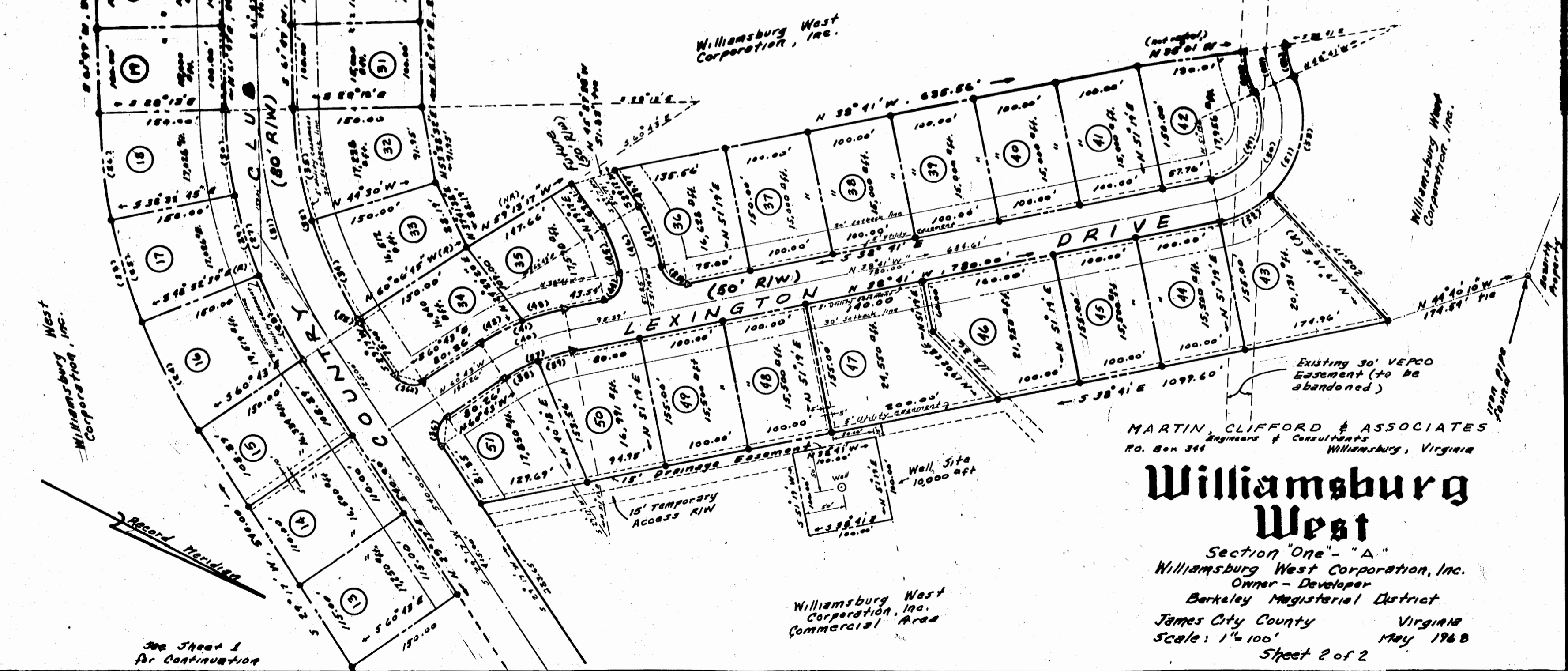


Recorded June 28, 1968
Williamsburg West Corporation, Inc.



CURVE DATA TABLE													
No.	Radius	Delta	Arc	Tangent	Chord	Chord Bearing	No.	Radius	Delta	Arc	Tangent	Chord	Chord Bearing
23	704.63	32 30 00	399.69	205.38	399.35	S 45 32 00 N	54	192.90	16 00 00	53.87	27.11	53.69	N 49 19 00 E
24	704.63	11 50 30	145.63	73.08	145.37	S 35 12 15 W	55	167.90	16 00 00	46.87	23.60	46.79	S 49 19 00 W
25	704.63	10 19 45	127.03	63.68	126.85	S 46 17 22 W	56	142.90	16 00 00	39.71	20.08	39.78	S 49 19 00 W
26	704.63	10 19 45	127.03	63.68	126.85	S 56 37 07 W	57	223.94	41 30 00	162.20	84.84	158.48	S 82 32 00 W
27	554.63	32 30 00	314.60	161.44	310.40	N 45 32 00 E	58	223.94	20 45 00	81.10	41.00	80.66	S 72 09 30 W
28	554.63	11 50 30	114.63	57.52	114.43	N 35 12 15 E	59	223.94	20 45 00	81.10	41.00	80.66	N 87 05 30 W
29	554.63	10 19 45	100.00	50.12	99.85	N 46 17 22 E	60	263.94	41 30 00	191.17	100.00	187.02	S 82 32 00 W
30	554.63	10 19 45	100.00	50.12	99.85	N 56 37 07 E	61	263.94	29 19 00	135.05	69.04	133.58	S 76 20 30 N
31	514.63	32 30 00	291.91	150.00	288.01	S 45 32 00 W	62	263.94	12 11 00	56.12	28.17	56.02	N 82 48 30 W
32	474.63	32 30 00	267.23	138.84	265.63	S 45 32 00 W	63	303.94	41 30 00	220.15	115.15	215.97	S 82 32 00 W
33	474.63	00 36 16	5.01	2.51	5.01	S 29 35 08 N	64	303.94	13 51 52	73.55	36.95	73.37	N 68 42 54 E
34	474.63	15 36 44	127.33	65.07	128.93	S 37 41 38 W	65	303.94	04 42 33	35.59	17.81	35.87	N 79 00 08 E
35	474.63	16 17 00	134.89	67.90	134.44	S 53 38 30 W	66	303.94	17 29 10	92.74	46.74	92.40	S 88 54 00 E
36	25.00	90 00 00	39.27	25.00	35.36	S 79 17 00 W	67	303.94	03 26 25	18.25	9.13	18.85	S 78 24 18 E
37	231.83	22 02 00	89.15	45.13	88.60	N 49 42 00 W	68	25.00	129 26 48	56.48	52.94	45.21	N 17 38 01 E
38	231.83	11 01 00	44.58	22.36	44.51	N 55 12 30 W	69	50.00	103 09 23	90.02	63.08	78.38	N 04 29 18 E
39	231.83	11 01 00	44.58	22.36	44.51	N 44 11 30 W	70	50.00	52 33 10	45.86	24.69	44.27	N 82 30 38 E
40	254.83	22 02 00	78.77	50.00	78.16	N 49 42 00 W	71	50.00	42 59 50	37.52	19.69	36.65	S 49 58 58 E
41	281.83	22 02 00	108.88	54.87	107.71	S 49 42 00 E	72	50.00	77 40 23	67.78	40.25	62.71	S 10 27 11 W
42	281.83	11 01 00	54.19	27.18	54.11	S 55 12 30 E	73	25.00	129 26 48	56.48	52.94	45.21	S 15 26 01 E
43	281.83	11 01 00	54.19	27.18	54.11	S 44 11 30 E	74	275.56	35 10 00	169.13	87.32	166.49	S 85 42 00 W
44	26.85	90 00 00	42.18	26.85	37.97	S 83 41 00 E	75	275.56	20 10 00	96.99	49.00	96.49	S 86 48 00 E
45	154.78	22 02 00	59.52	30.13	59.16	N 40 18 00 E	76	275.56	15 00 00	72.14	36.28	71.99	N 75 39 00 E
46	179.78	22 02 00	69.14	35.00	68.71	S 40 18 00 W	77	315.56	35 10 00	199.68	100.00	190.64	S 85 42 00 W
47	204.78	22 02 00	78.75	39.87	78.26	S 40 18 00 W	78	355.56	35 10 00	218.23	112.63	214.82	S 85 42 00 W
48	26.85	90 00 00	42.18	26.85	37.97	S 06 19 00 W	79	355.56	13 50 33	85.90	43.16	85.69	N 83 58 14 W
49	78.00	100 00 00	130.90	89.88	114.91	S 88 41 00 E	80	355.56	16 04 52	100.00	50.33	99.47	S 81 23 01 W
50	100.00	100 00 00	174.53	119.18	153.21	N 88 41 00 N	81	355.56	05 12 35	32.33	16.17	32.38	S 74 43 18 N
51	125.00	100 00 00	218.17	148.97	191.51	N 88 41 00 N	82	25.00	90 00 00	39.27	25.00	38.96	N 66 39 00 W
52	125.00	32 00 00	67.81	38.84	68.71	N 54 41 00 W	83	25.00	90 00 00	39.27	25.00	38.96	S 15 48 00 E
53	125.00	68 00 00	148.35	84.81	139.30	S 77 19 00 W							

Williamsburg West Corporation, Inc.



MARTIN, CLIFFORD & ASSOCIATES
Engineers & Consultants
P.O. Box 344 Williamsburg, Virginia

Williamsburg West
Section "One" - "A"
Williamsburg West Corporation, Inc.
Owner - Developer
Berkeley Magisterial District
James City County Virginia
Scale: 1"=100'
May 1968
Sheet 2 of 2

See Sheet 1 for Continuation