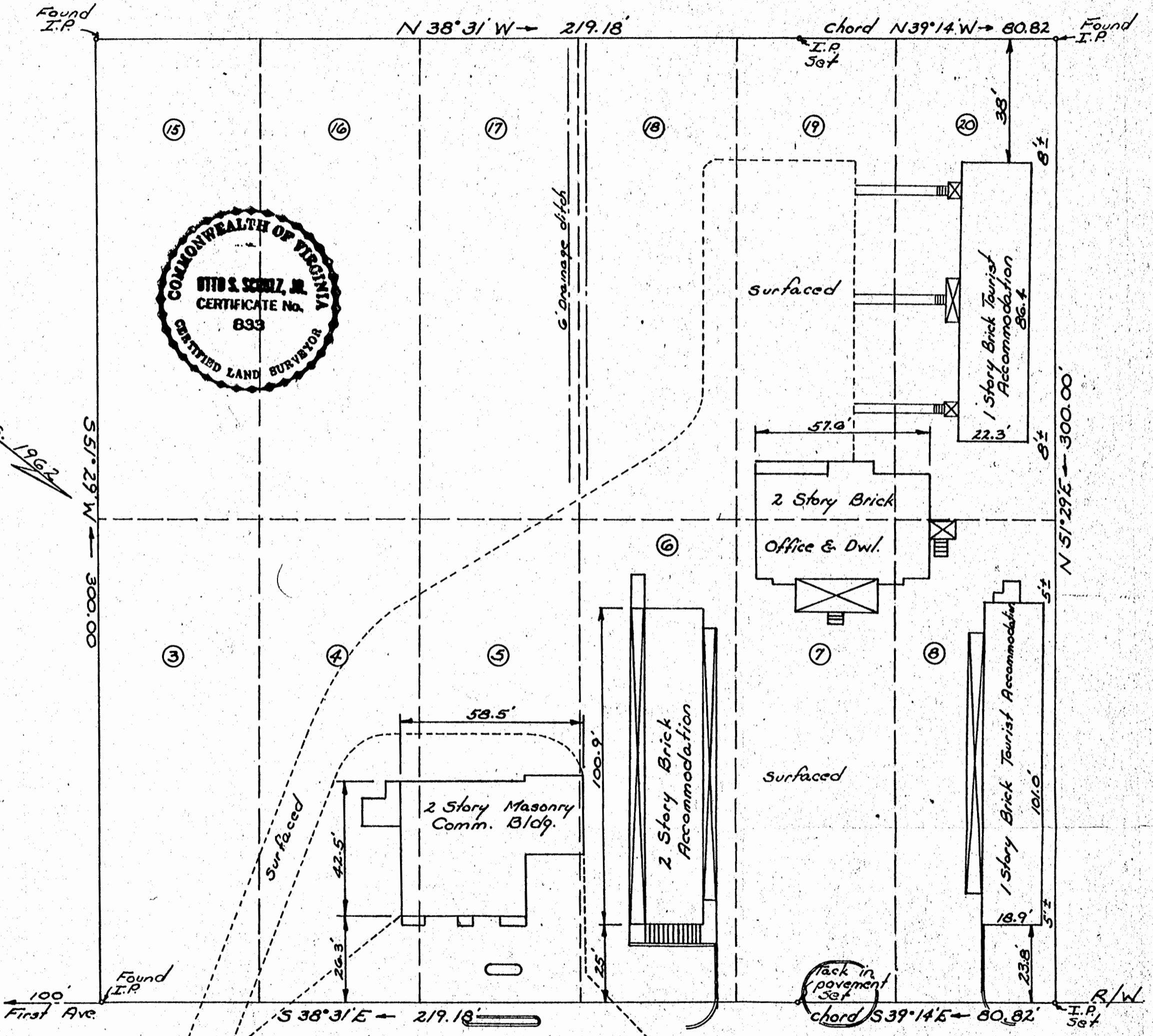


Recorded 1/19/68

See D B 114 Page 646

Wickre Street Shown on record plat as "possible street"



Jamestown District, James City County, Virginia
Wickre's Colonial Terrace Subdivision
Plat of boundary survey & improvements to lots
3, 4, 5, 6, 7, 8, 15, 16, 17, 18, 19 & 20 - Section No. 2.
For conveyance by - Charles T. & Annis B. Lewis,
76 - Donald W. & Pauline O. Alphin Inc.

L. V. WOODSON & ASSOCIATES
ENGINEERS & SURVEYORS
JANUARY 15, 1968 Scale: 1"=30'