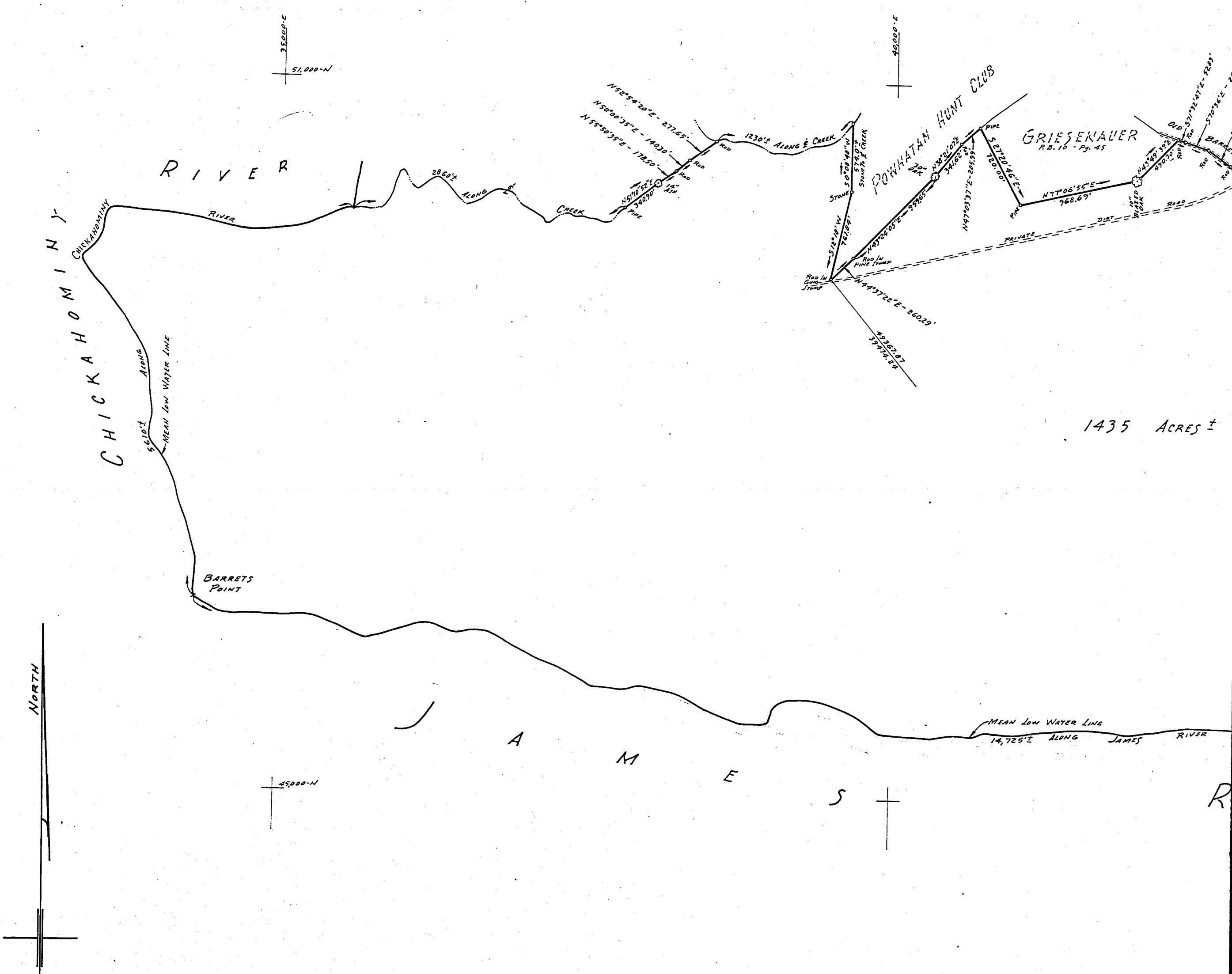


Recorded Dec. 6, 1967.

See D B 114, Page 293

-NOTES-

1. PROPERTY LINES WITH METES AND BOUNDS: CHOPPED AND/OR PAINTED.
2. PHYSICAL MONUMENTS AS SHOWN.
3. TELEPHONE LINE (U.S.) ALONG SOUTH SIDE OF ROUTE 5 APPROXIMATELY 30' TO 45' FROM CENTER LINE OF ROAD.
4. BEARINGS REFER TO STATE HIGHWAY PLANS OF ROUTE 5. COORDINATE VALUES ASSUMED.
5. HIGHWAY MONUMENTS FOUND AT ALL R.O.W. BREAKS ALONG SOUTH LINE OF ROUTE 5.



1435 ACRES ±

The Governor's

