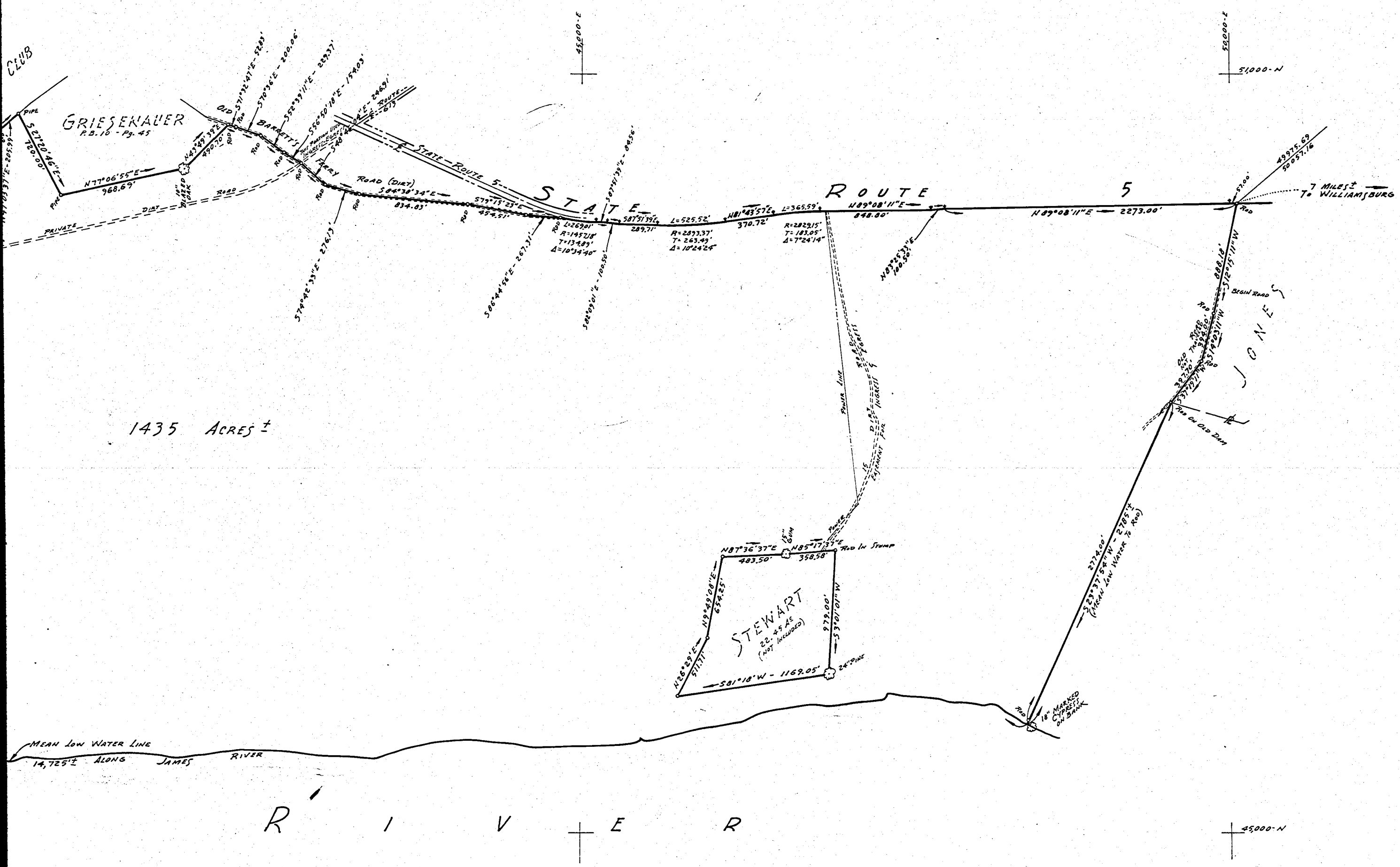
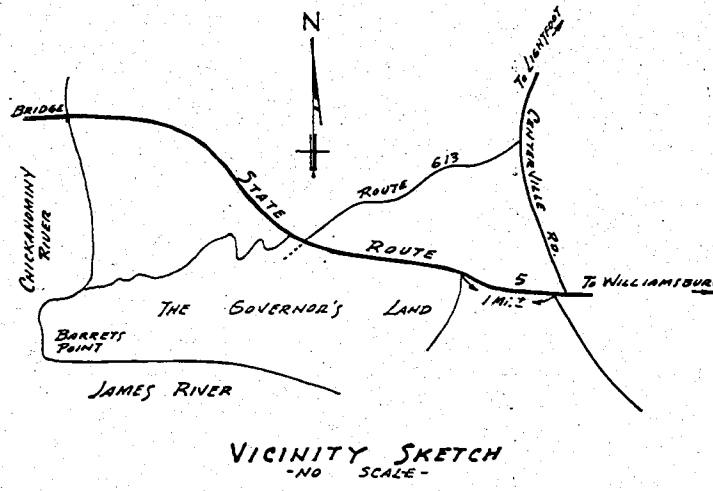


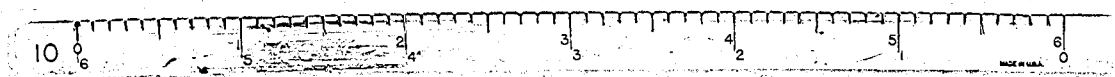
Recorded Dec. 6, 1967
 See
 DB 114 Page 293



1435 ACRES ±

R I V E R

Governor's Land



J. K. TIMMONS & ASSOCIATES 1314 W. MAIN ST. RICHMOND, VA.	
BOUNDARY MAP 1435 ACRES ± LYING ON SOUTH SIDE OF STATE ROUTE 5.	
JAMES CITY CO.,	VIRGINIA
DATE: Nov. 29, 1967 SCALE: 1" = 600' DRAWN: GLG CHECKED: P.N.S.	REVISIONS: JOB No 11,151