

Recorded November 29, 1967  
D. B. 114, p. 240

~~THE CURVE DATA POINTS 2, 3, 4 & 5 WERE COMPUTED FROM A TRAVELER RUN FROM THE 1/2" OF S.A. 699. THESE POINTS WERE NOT SET IN THE FIELD.~~

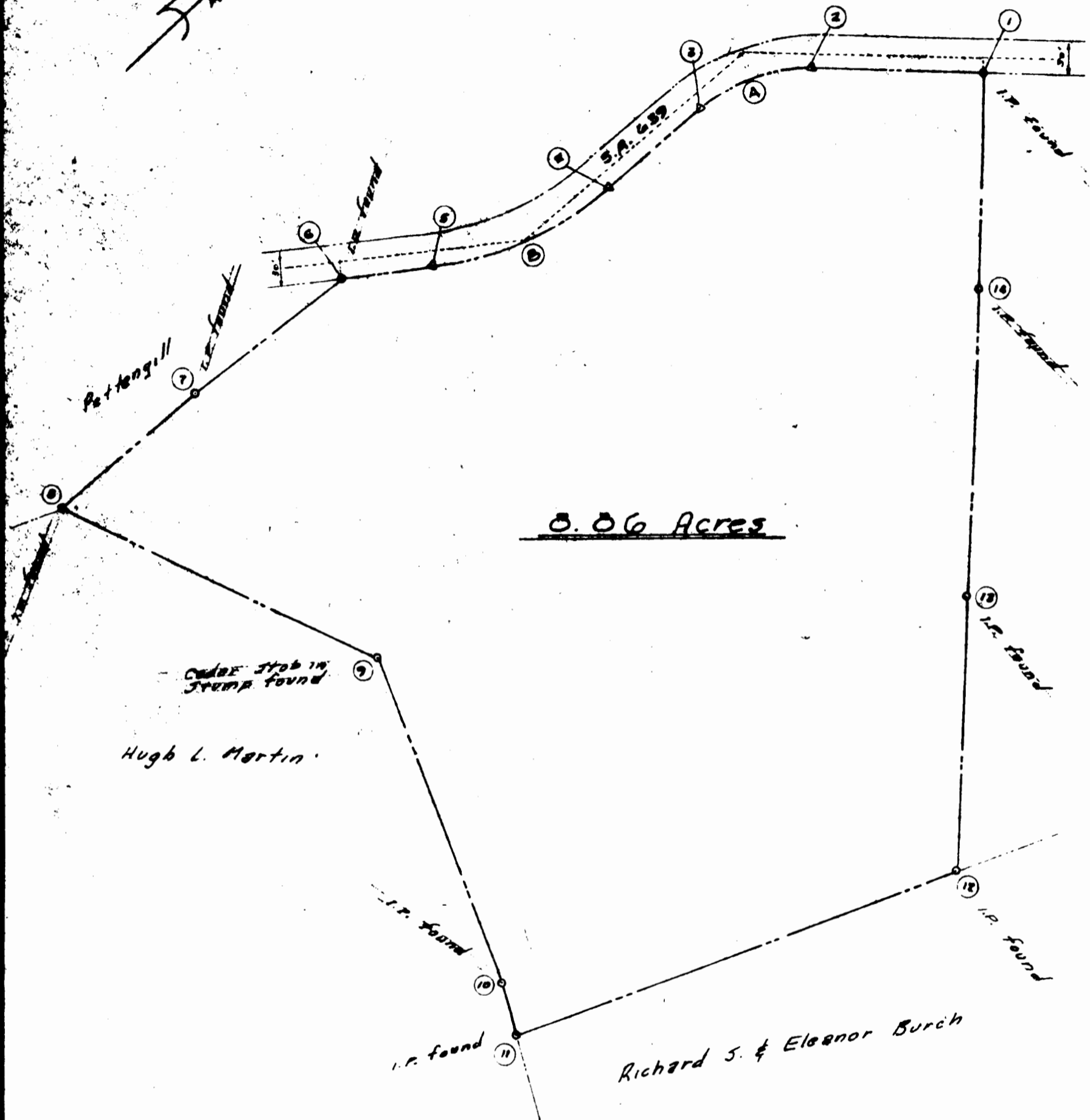
Curve Data

CURVE NO.	ANGLE	RADIUS	ARC	TANGENT	CHORD	CHORD BEARING
(A)	40° 59' 40"	147.76'	165.71'	55.23'	103.47'	S 22° 57' 40" W
(B)	33° 42' 00"	202.56'	144.80'	55.50'	163.81'	S 19° 12' 50" W

Data Table

COURSE	BEARING	DISTANCE	REMARKS
①-②	S 43° 27' 20" W	148.11	
②-③	S 22° 57' 40" W	103.47	CHORD OF CURVE (A)
③-④	S 02° 27' 40" W	103.20	
④-⑤	S 19° 12' 50" W	163.81	CHORD OF CURVE (B)
⑤-⑥	S 36° 07' 20" W	57.52	
⑥-⑦	S 04° 56' 16" W	127.80	
⑦-⑧	S 02° 04' 40" W	151.99	
⑧-⑨	N 64° 26' 10" E	279.90	
⑨-⑩	S 28° 56' 20" E	279.95	
⑩-⑪	S 03° 00' 20" E	27.61	
⑪-⑫	N 22° 30' 40" E	142.25	
⑫-⑬	N 44° 48' 40" W	234.75	
⑬-⑭	N 74° 25' 20" W	247.87	
⑭-⑮	N 76° 24' 10" W	182.80	

Note: Plat bearings referenced to course ②-③ obtained from prior plat recorded in Plat book 20, Page 58, James City County.



PLAT  
OF THE PROPERTY OF  
W. J. C. REALTY CORP.

MARTIN, CLIFFORD & ASSOCIATES  
ENGINEERS & CONSULTANTS  
STAFFORD, VA. WILLIAMSBURG, VA.

DATE: October 27, 1967  
SCALE: 1"=100'

Sharon District James City Co.