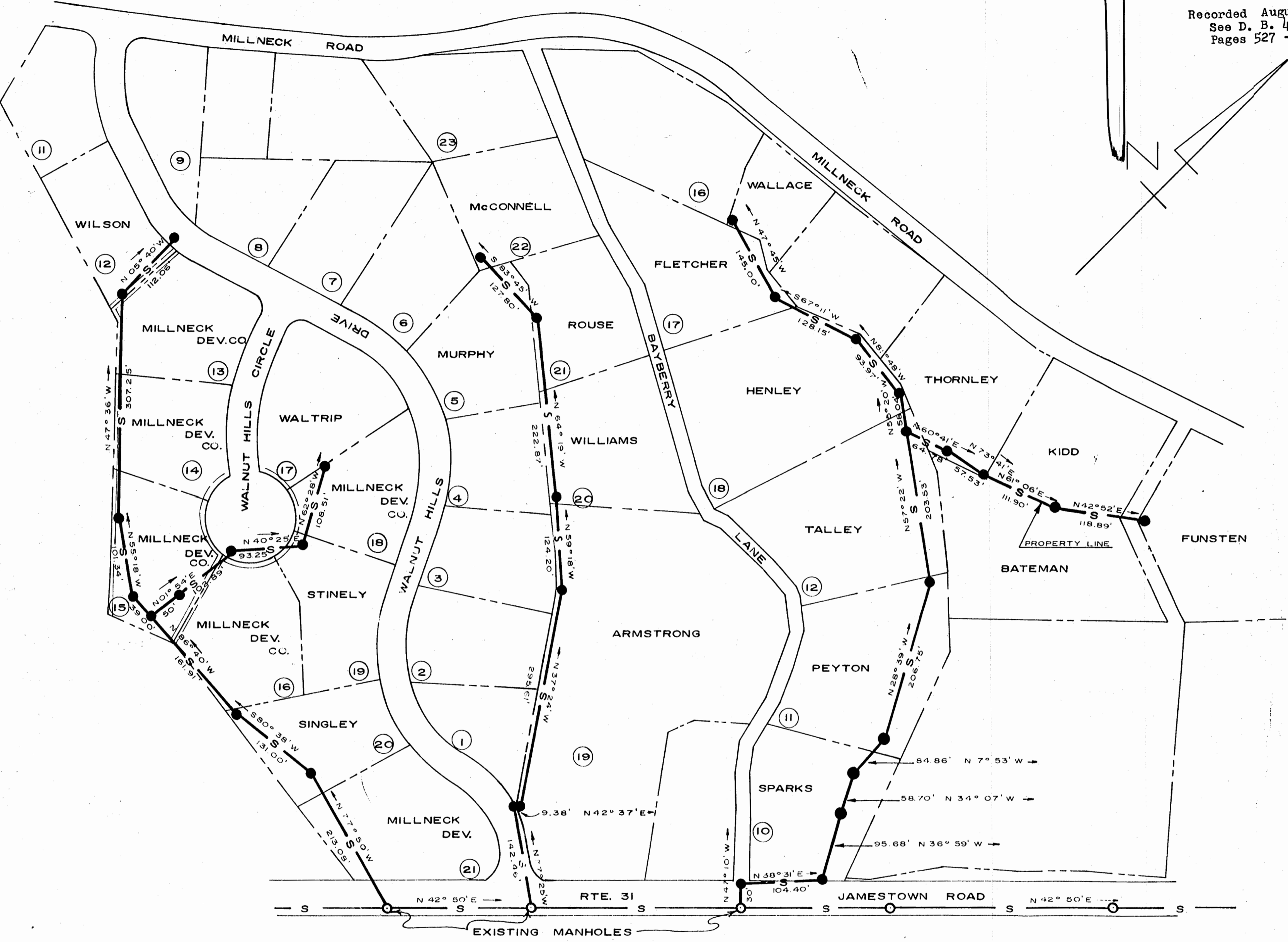


Recorded August 25, 1967  
See D. B. 41  
Pages 527 - 570



<b>CITY of WILLIAMSBURG</b>	
PLAT SHOWING LOCATION OF 8" SANITARY SEWERS IN WALNUT HILLS AND WALLACE SUBDIVISIONS	
10 MAY 1967	SCALE 1" = 100'