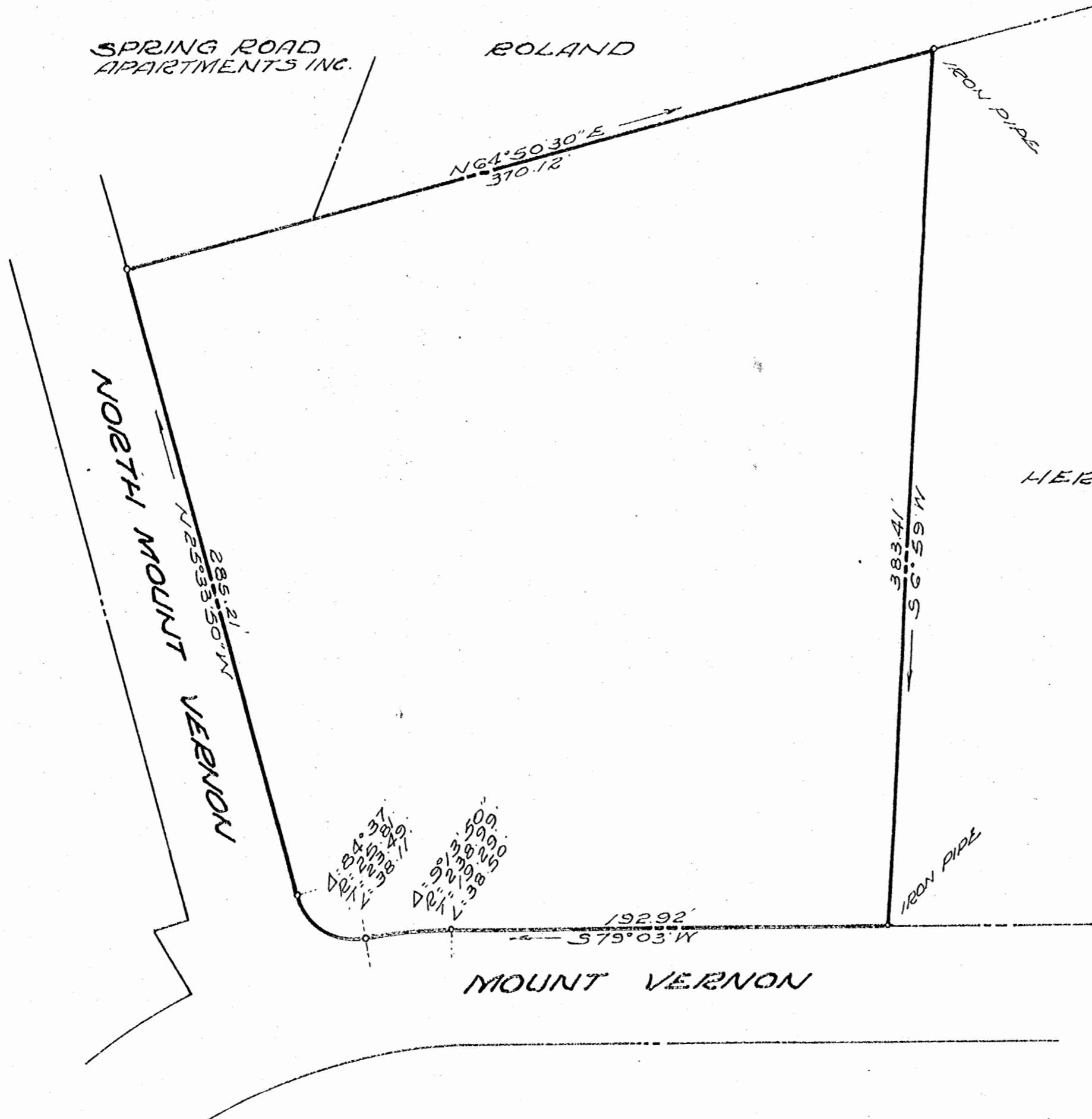
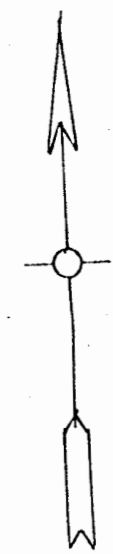


SPRING ROAD APARTMENTS INC.

ROLAND



HERITAGE INN & MOTEL

Δ: 84° 37'  
L: 225.49'  
Δ: 91° 35'  
L: 238.50'

Recorded September 9, 1966  
See  
Deed Book 40 page 193

MOUNT VERNON

M<sup>c</sup>MANUS, M<sup>o</sup>CK & M<sup>c</sup>MANUS  
CIVIL ENGINEER, LAND SURVEYORS  
WILLIAMSBURG, VIRGINIA

AREA: 2.41 ACRES.

A PARCEL OF LAND  
TO BE CONVEYED  
FROM CUNTOXI H. LAWSON TO  
SPRING ROAD APARTMENTS INC.  
CITY OF WILLIAMSBURG  
VIRGINIA  
SCALE: 1" = 50' AUGUST 15, 1966