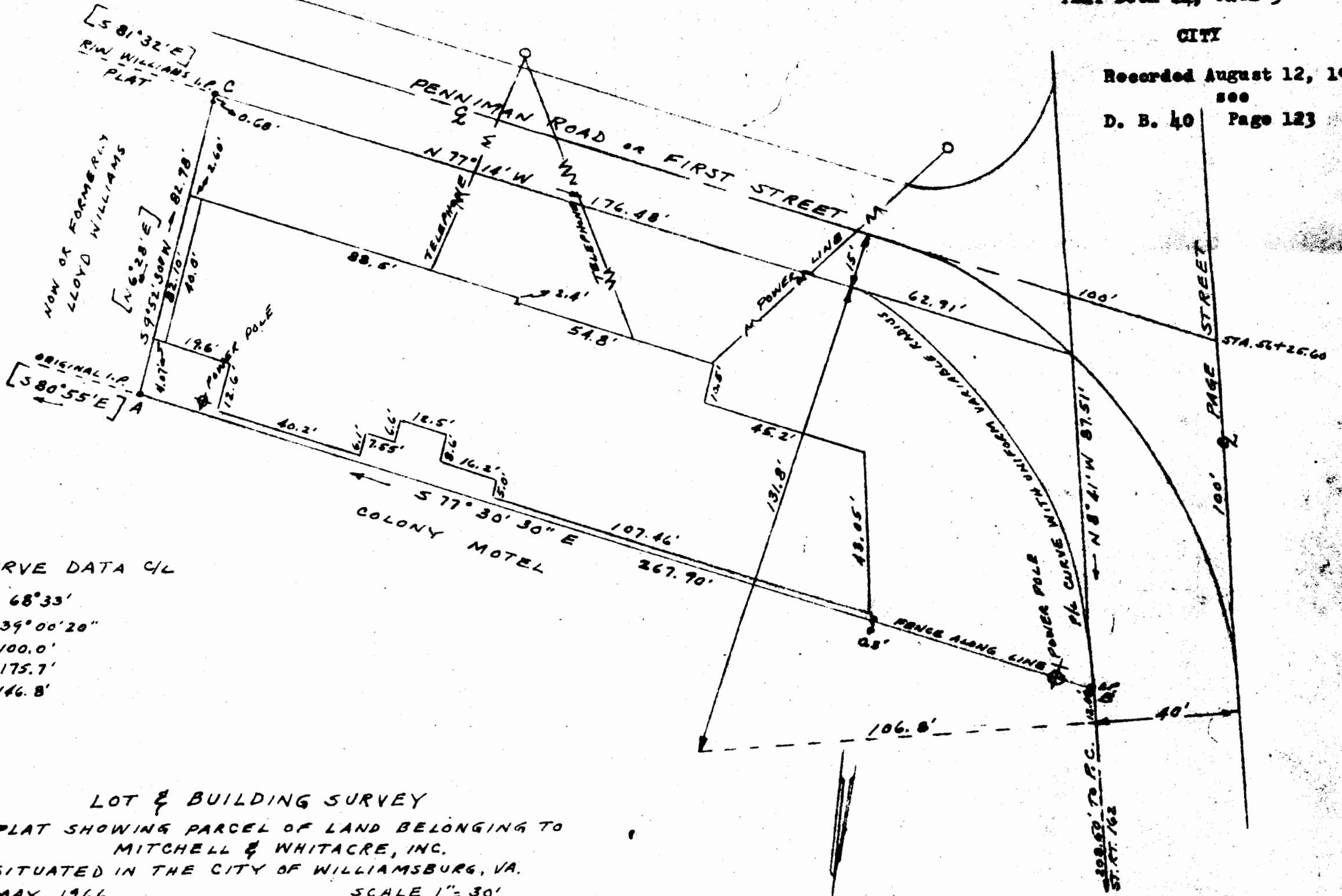


CITY

Recorded August 12, 1966

see

D. B. 40 Page 123



CURVE DATA 4/L

Δ = 68° 33'
 D = 39° 00' 20"
 T = 100.0'
 L = 175.7'
 R = 146.8'

LOT & BUILDING SURVEY
 PLAT SHOWING PARCEL OF LAND BELONGING TO
 MITCHELL & WHITACRE, INC.
 SITUATED IN THE CITY OF WILLIAMSBURG, VA.
 MAY, 1966 SCALE 1" = 30'

Wetherill D. Thomas
 WETHERILL D. THOMAS, C.L.S. 579

NOTE - POWER LINE A-B, PIPE B PLACED ON TANGENT
 LINE A-C HAS SAME ANGLE OFF REAR LINE AS
 SHOWN ON WILLIAMS PLAT. BEARINGS IN BRACKETS
 FROM WILLIAMS PLAT.

