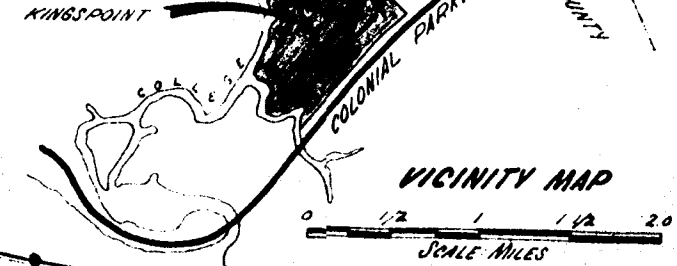


KINGSPPOINT

SECTION 3
 PARCEL A
 Kingspoint Corporation
 Jamestown Dist.
 James City County, Va.

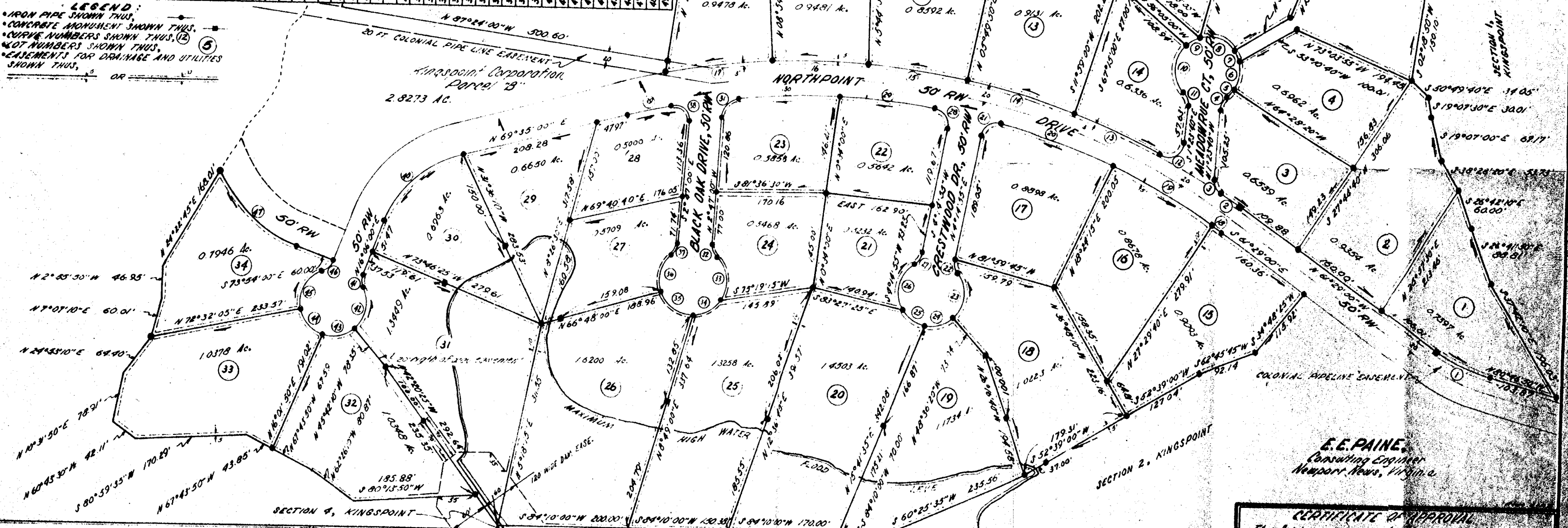
R.M. MACKINTOSH, CERTIFIED LAND SURVEYOR
 SCALE 1"=100' DATE: MAR 25, 1966
 REVISED MAY 5, 1966

TOTAL AREA OF LOTS 30.2384 AC.
 " " STREETS 3.2915 AC.
 TOTAL 33.5299 AC.



LOT	AREA	PERIMETER	BEARING	ANGLE	DIAGONAL	AREA	PERIMETER	BEARING	ANGLE	DIAGONAL
1	0.9478	174.00	N 72° 00' 00" W	90.00	174.00	0.9478	174.00	N 72° 00' 00" W	90.00	174.00
2	0.9478	174.00	N 72° 00' 00" W	90.00	174.00	0.9478	174.00	N 72° 00' 00" W	90.00	174.00
3	0.9478	174.00	N 72° 00' 00" W	90.00	174.00	0.9478	174.00	N 72° 00' 00" W	90.00	174.00
4	0.9478	174.00	N 72° 00' 00" W	90.00	174.00	0.9478	174.00	N 72° 00' 00" W	90.00	174.00
5	0.9478	174.00	N 72° 00' 00" W	90.00	174.00	0.9478	174.00	N 72° 00' 00" W	90.00	174.00
6	0.9478	174.00	N 72° 00' 00" W	90.00	174.00	0.9478	174.00	N 72° 00' 00" W	90.00	174.00
7	0.9478	174.00	N 72° 00' 00" W	90.00	174.00	0.9478	174.00	N 72° 00' 00" W	90.00	174.00
8	0.9478	174.00	N 72° 00' 00" W	90.00	174.00	0.9478	174.00	N 72° 00' 00" W	90.00	174.00
9	0.9478	174.00	N 72° 00' 00" W	90.00	174.00	0.9478	174.00	N 72° 00' 00" W	90.00	174.00
10	0.9478	174.00	N 72° 00' 00" W	90.00	174.00	0.9478	174.00	N 72° 00' 00" W	90.00	174.00
11	0.9478	174.00	N 72° 00' 00" W	90.00	174.00	0.9478	174.00	N 72° 00' 00" W	90.00	174.00
12	0.9478	174.00	N 72° 00' 00" W	90.00	174.00	0.9478	174.00	N 72° 00' 00" W	90.00	174.00
13	0.9478	174.00	N 72° 00' 00" W	90.00	174.00	0.9478	174.00	N 72° 00' 00" W	90.00	174.00
14	0.9478	174.00	N 72° 00' 00" W	90.00	174.00	0.9478	174.00	N 72° 00' 00" W	90.00	174.00
15	0.9478	174.00	N 72° 00' 00" W	90.00	174.00	0.9478	174.00	N 72° 00' 00" W	90.00	174.00
16	0.9478	174.00	N 72° 00' 00" W	90.00	174.00	0.9478	174.00	N 72° 00' 00" W	90.00	174.00
17	0.9478	174.00	N 72° 00' 00" W	90.00	174.00	0.9478	174.00	N 72° 00' 00" W	90.00	174.00
18	0.9478	174.00	N 72° 00' 00" W	90.00	174.00	0.9478	174.00	N 72° 00' 00" W	90.00	174.00
19	0.9478	174.00	N 72° 00' 00" W	90.00	174.00	0.9478	174.00	N 72° 00' 00" W	90.00	174.00
20	0.9478	174.00	N 72° 00' 00" W	90.00	174.00	0.9478	174.00	N 72° 00' 00" W	90.00	174.00
21	0.9478	174.00	N 72° 00' 00" W	90.00	174.00	0.9478	174.00	N 72° 00' 00" W	90.00	174.00
22	0.9478	174.00	N 72° 00' 00" W	90.00	174.00	0.9478	174.00	N 72° 00' 00" W	90.00	174.00
23	0.9478	174.00	N 72° 00' 00" W	90.00	174.00	0.9478	174.00	N 72° 00' 00" W	90.00	174.00
24	0.9478	174.00	N 72° 00' 00" W	90.00	174.00	0.9478	174.00	N 72° 00' 00" W	90.00	174.00
25	0.9478	174.00	N 72° 00' 00" W	90.00	174.00	0.9478	174.00	N 72° 00' 00" W	90.00	174.00
26	0.9478	174.00	N 72° 00' 00" W	90.00	174.00	0.9478	174.00	N 72° 00' 00" W	90.00	174.00
27	0.9478	174.00	N 72° 00' 00" W	90.00	174.00	0.9478	174.00	N 72° 00' 00" W	90.00	174.00
28	0.9478	174.00	N 72° 00' 00" W	90.00	174.00	0.9478	174.00	N 72° 00' 00" W	90.00	174.00
29	0.9478	174.00	N 72° 00' 00" W	90.00	174.00	0.9478	174.00	N 72° 00' 00" W	90.00	174.00
30	0.9478	174.00	N 72° 00' 00" W	90.00	174.00	0.9478	174.00	N 72° 00' 00" W	90.00	174.00
31	0.9478	174.00	N 72° 00' 00" W	90.00	174.00	0.9478	174.00	N 72° 00' 00" W	90.00	174.00
32	0.9478	174.00	N 72° 00' 00" W	90.00	174.00	0.9478	174.00	N 72° 00' 00" W	90.00	174.00
33	0.9478	174.00	N 72° 00' 00" W	90.00	174.00	0.9478	174.00	N 72° 00' 00" W	90.00	174.00
34	0.9478	174.00	N 72° 00' 00" W	90.00	174.00	0.9478	174.00	N 72° 00' 00" W	90.00	174.00

LEGEND:
 IRON PIPE SHOWN THUS
 CONCRETE MONUMENT SHOWN THUS
 CURVE NUMBERS SHOWN THUS (12)
 NOT NUMBERS SHOWN THUS
 EASEMENTS FOR DRAINAGE AND UTILITIES SHOWN THUS



I HEREBY CERTIFY THAT TO THE BEST OF MY KNOWLEDGE AND BELIEF, ALL OF THE REQUIREMENTS OF THE BOARD OF SUPERVISORS AND ORDINANCES FOR THE COUNTY OF JAMES CITY, VIRGINIA REGARDING THE PLATTING OF SUBDIVISIONS WITHIN THE COUNTY HAVE BEEN COMPLIED WITH.
 GIVEN UNDER MY HAND THIS 1ST DAY OF APRIL, 1966
 R.M. MACKINTOSH, CERT. LAND SURVEYOR

THIS SUBDIVISION IS WITH THE FREE CONSENT AND IN ACCORDANCE WITH THE DESIRES AND WISHES OF THE UNDERSIGNED OWNERS & PROPRIETORS.
 KINGSPPOINT CORPORATION
 SECRETARY
 SOURCE OF TITLE
 DEED BOOK 105 PAGE 523

STATE OF VIRGINIA, CITY OF WILLIAMSBURG
 I, MARY FRANCES GAIN, A NOTARY PUBLIC, DO CERTIFY THAT THE PERSONS WHOSE NAMES ARE SIGNED TO THE FOREGOING WRITING HAVE ACKNOWLEDGED THE SAME BEFORE ME IN MY CITY AND STATE AFORESAID.
 GIVEN UNDER MY HAND THIS 9TH DAY OF MAY 1966
 MY COMM. EXPIRES JUNE 5, 1967.
 Mary Frances Gain

STATE OF VIRGINIA, COUNTY OF JAMES CITY
 IN THE CLERK'S OFFICE OF THE CIRCUIT COURT FOR THE COUNTY OF JAMES CITY COUNTY THE RECORD OF MAY 1966, THE MAP SHOWN HEREON WAS PRESENTED AND ADMITTED TO THE RECORD AS THE LAW DIRECTS.
 T. S. E. Va. Clerk of Circuit Court
 PLAT BOOK 23 PAGE 49

CERTIFICATE OF APPROVAL
 This Subdivision Map as shown on this Subdivision is Approved by the undersigned in accordance with Existing Subdivision Regulations and may be committed to Record.
 5-9-66
 5/9/66
 5/9/66
 E.E. PAINE, Consulting Engineer, Newport News, Virginia