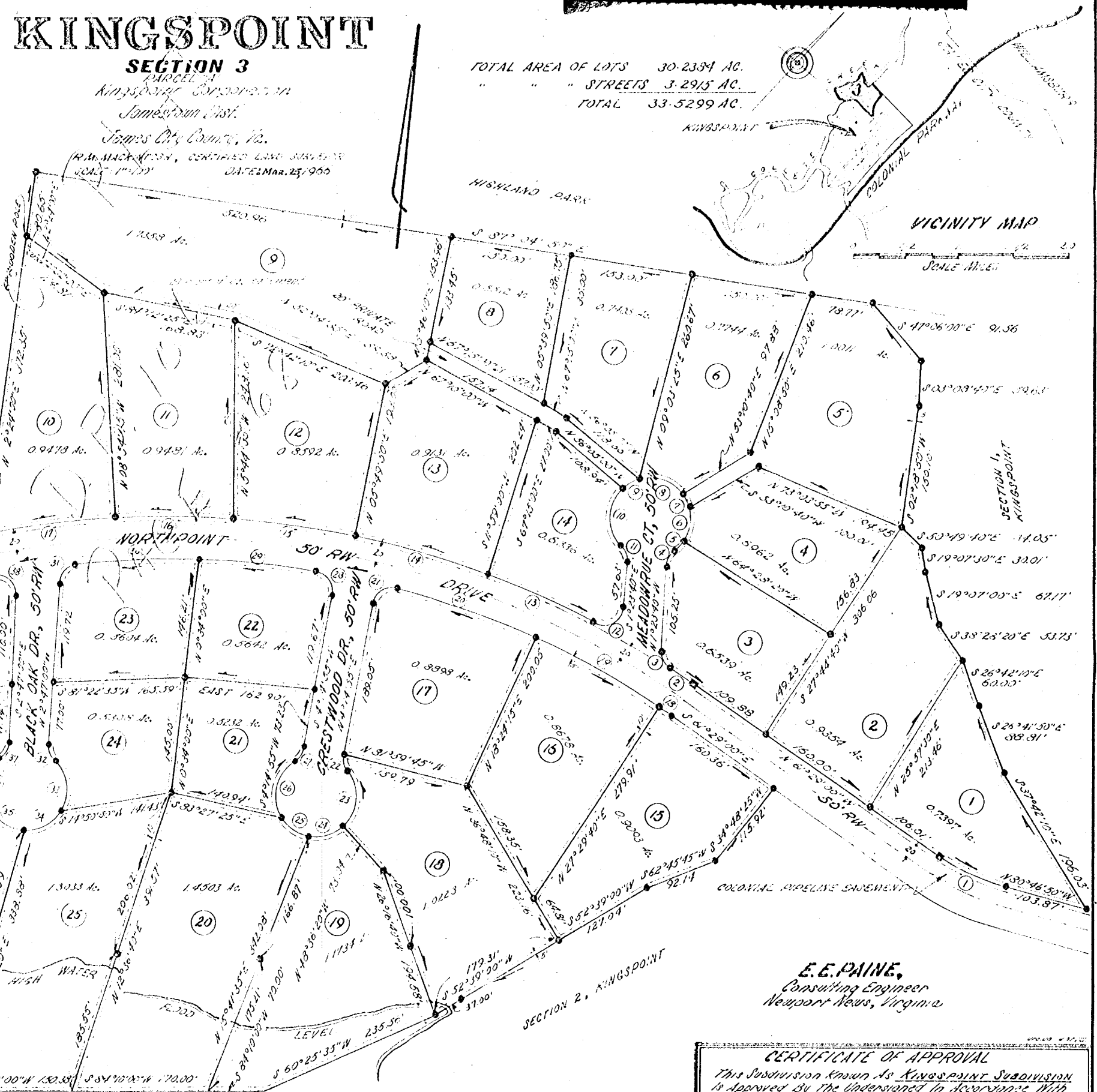


New: P/B 23/49

LOT	AREA	PERCENT	ANGLE	BEARING	LENGTH
1	179.10	0.53	89.45	N 72° 00' 00" W	179.10
2	179.10	0.53	89.45	N 72° 00' 00" W	179.10
3	179.10	0.53	89.45	N 72° 00' 00" W	179.10
4	179.10	0.53	89.45	N 72° 00' 00" W	179.10
5	179.10	0.53	89.45	N 72° 00' 00" W	179.10
6	179.10	0.53	89.45	N 72° 00' 00" W	179.10
7	179.10	0.53	89.45	N 72° 00' 00" W	179.10
8	179.10	0.53	89.45	N 72° 00' 00" W	179.10
9	179.10	0.53	89.45	N 72° 00' 00" W	179.10
10	179.10	0.53	89.45	N 72° 00' 00" W	179.10
11	179.10	0.53	89.45	N 72° 00' 00" W	179.10
12	179.10	0.53	89.45	N 72° 00' 00" W	179.10
13	179.10	0.53	89.45	N 72° 00' 00" W	179.10
14	179.10	0.53	89.45	N 72° 00' 00" W	179.10
15	179.10	0.53	89.45	N 72° 00' 00" W	179.10
16	179.10	0.53	89.45	N 72° 00' 00" W	179.10
17	179.10	0.53	89.45	N 72° 00' 00" W	179.10
18	179.10	0.53	89.45	N 72° 00' 00" W	179.10
19	179.10	0.53	89.45	N 72° 00' 00" W	179.10
20	179.10	0.53	89.45	N 72° 00' 00" W	179.10
21	179.10	0.53	89.45	N 72° 00' 00" W	179.10
22	179.10	0.53	89.45	N 72° 00' 00" W	179.10
23	179.10	0.53	89.45	N 72° 00' 00" W	179.10
24	179.10	0.53	89.45	N 72° 00' 00" W	179.10
25	179.10	0.53	89.45	N 72° 00' 00" W	179.10
26	179.10	0.53	89.45	N 72° 00' 00" W	179.10
27	179.10	0.53	89.45	N 72° 00' 00" W	179.10
28	179.10	0.53	89.45	N 72° 00' 00" W	179.10
29	179.10	0.53	89.45	N 72° 00' 00" W	179.10
30	179.10	0.53	89.45	N 72° 00' 00" W	179.10
31	179.10	0.53	89.45	N 72° 00' 00" W	179.10
32	179.10	0.53	89.45	N 72° 00' 00" W	179.10
33	179.10	0.53	89.45	N 72° 00' 00" W	179.10
34	179.10	0.53	89.45	N 72° 00' 00" W	179.10
35	179.10	0.53	89.45	N 72° 00' 00" W	179.10
36	179.10	0.53	89.45	N 72° 00' 00" W	179.10
37	179.10	0.53	89.45	N 72° 00' 00" W	179.10
38	179.10	0.53	89.45	N 72° 00' 00" W	179.10
39	179.10	0.53	89.45	N 72° 00' 00" W	179.10
40	179.10	0.53	89.45	N 72° 00' 00" W	179.10
41	179.10	0.53	89.45	N 72° 00' 00" W	179.10
42	179.10	0.53	89.45	N 72° 00' 00" W	179.10
43	179.10	0.53	89.45	N 72° 00' 00" W	179.10
44	179.10	0.53	89.45	N 72° 00' 00" W	179.10
45	179.10	0.53	89.45	N 72° 00' 00" W	179.10
46	179.10	0.53	89.45	N 72° 00' 00" W	179.10
47	179.10	0.53	89.45	N 72° 00' 00" W	179.10
48	179.10	0.53	89.45	N 72° 00' 00" W	179.10
49	179.10	0.53	89.45	N 72° 00' 00" W	179.10



**LEGEND:**  
 IRON PIPE SHOWN THUS: —  
 CONCRETE MONUMENT SHOWN THUS: —  
 CURVE NUMBERS SHOWN THUS: (C)  
 LOT NUMBERS SHOWN THUS: (L)  
 EASEMENTS FOR DRAINAGE AND UTILITIES SHOWN THUS: —

I HEREBY CERTIFY THAT TO THE BEST OF MY KNOWLEDGE AND BELIEF, ALL OF THE REQUIREMENTS OF THE BOARD OF SUPERVISORS AND ORDINANCES FOR THE COUNTY OF JAMES CITY, VIRGINIA REGARDING THE PLATING OF SUBDIVISIONS WITHIN THE COUNTY HAVE BEEN COMPLIED WITH.  
 GIVEN UNDER MY HAND THIS 25<sup>TH</sup> DAY OF MARCH, 1966  
 R.M. MCKINNEY, JR.  
 R.M. MCKINNEY, JR., CERT. LAND SURVEYOR

THIS SUBDIVISION IS WITH THE FIRST CONSENT AND IN ACCORDANCE WITH THE DESIRES AND WISHES OF THE UNDERSIGNED OWNERS & PROPRIETORS:  
 KINGSPOINT CORPORATION  
 PRESIDENT: J. Marion 3-25-66  
 SECRETARY: J. Barker 3-25-66  
 SOURCE OF TITLE:  
 DEED BOOK 105, PAGE 523

STATE OF VIRGINIA, CITY OF WILLIAMSBURG, I, MARY FRANCES GOULD, A NOTARY PUBLIC, DO CERTIFY THAT THE PERSONS WHOSE NAMES ARE SIGNED TO THE FOREGOING WRITING HAVE ACKNOWLEDGED THE SAME BEFORE ME IN MY CITY AND STATE AFORESAID.  
 GIVEN UNDER MY HAND THIS 25<sup>TH</sup> DAY OF MARCH, 1966  
 MY COMMISSION EXPIRES JUNE 5, 1967.  
 Mary Frances Gould

STATE OF VIRGINIA, COUNTY OF JAMES CITY: IN THE CLERK'S OFFICE OF THE CIRCUIT COURT FOR THE COUNTY OF JAMES CITY COUNTY THE 25<sup>TH</sup> DAY OF MARCH, 1966, THE MAP SHOWING HEREON WAS PRESENTED AND ADMITTED TO THE RECORD AS THE L&M MAPS, Virginia, Beachland, Co. MADE BY J. Barker & Charles C. Barker PLAT BOOK 23, PAGE 41

**E.E. PAINE,**  
 Consulting Engineer  
 Newport News, Virginia

**CERTIFICATE OF APPROVAL**  
 This Subdivision known as Kingspoint Subdivision is Approved by the Undersigned in Accordance with Existing Subdivision Regulations and may be committed to Record.  
 3-25-66 [Signature]  
 Highway Engineer  
 3-25-66 [Signature]  
 Health Officer  
 3-25-66 [Signature]  
 Agent in Representative of Gov. Body.