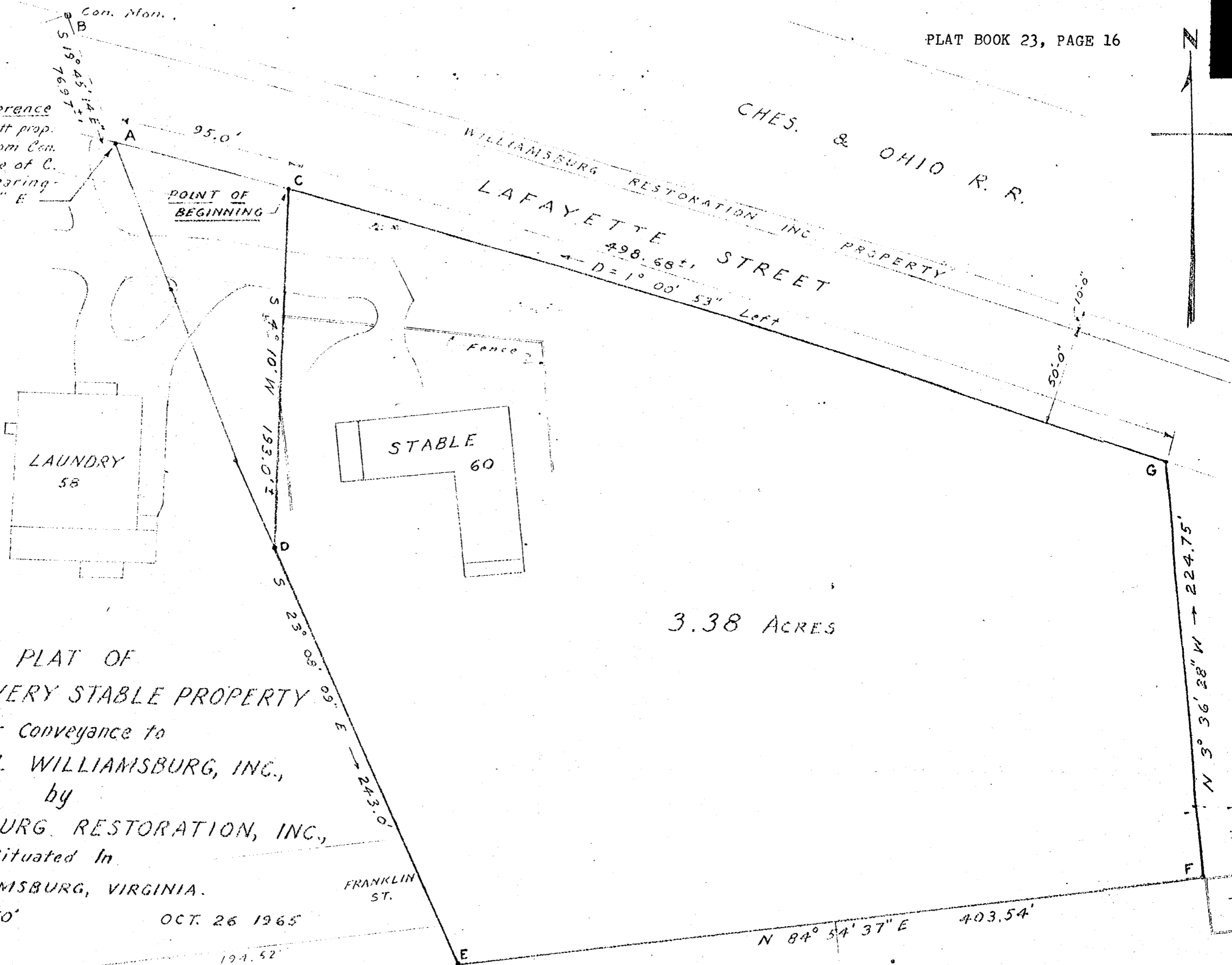


Point of Reference
on Lottie Garrett prop.
line 76.97' from Cen.
Mon. on S. line of C.
& O. R.R. Bearing
S. 19° 45' 14" E



3.38 ACRES

PLAT OF
COACH & LIVERY STABLE PROPERTY

For Conveyance to

COLONIAL WILLIAMSBURG, INC.,

by

WILLIAMSBURG RESTORATION, INC.,

Situated In

WILLIAMSBURG, VIRGINIA.

SCALE - 1" = 50'

OCT. 26 1965