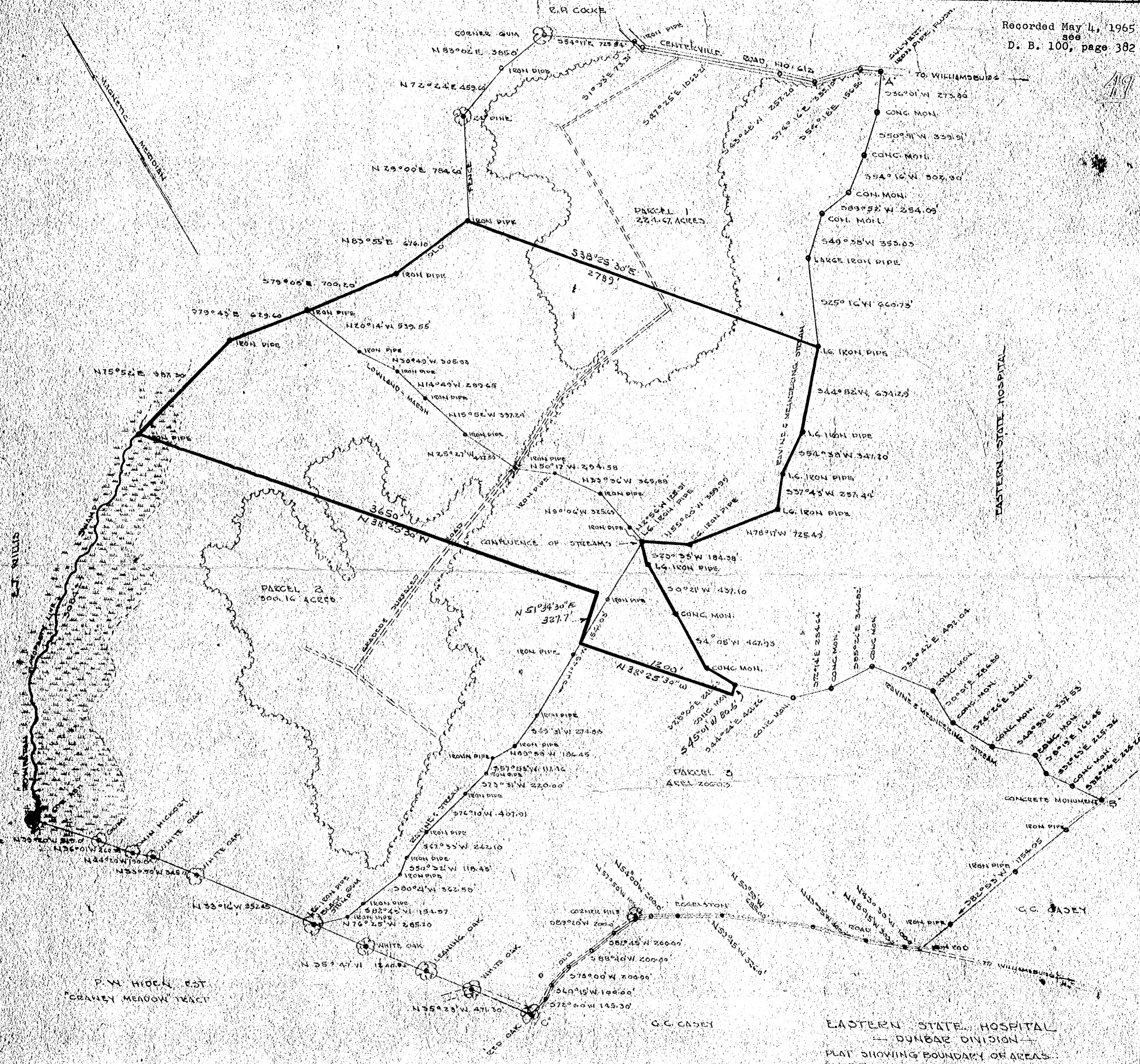


Recorded May 4, 1965
D. B. 100, page 382

119



EASTERN STATE HOSPITAL
DUNBAR DIVISION
PLAT SHOWING BOUNDARY OF AREAS
UNDER CONSIDERATION FOR DISPOSAL
A TO B AND INTERIOR LINES, PRECISE SURVEYS,
B TO C, BE MARKING PART OF ORIGINAL BOUNDARY
C TO A, VS. MARKING 'COCKE TRACT' BY SURVEY
ALL AREAS GIVEN BASED ON ABOVE SURVEYS
NOVEMBER 14, 1960 SCALE 1" = 500'
TIMEX LINES SHOWN ARE APPROXIMATE

REVISED 4-27-65 - 200 ACRE AREA
COMPUTED FROM BRADSHAW'S DISTANCES
GIVEN ON THIS PLAT
REVISED NOV. 13, 1968

WALTER D. MCMAHON
SURVEYOR
1000 N. W. 10th St.
TAMPA, FLORIDA 33604