

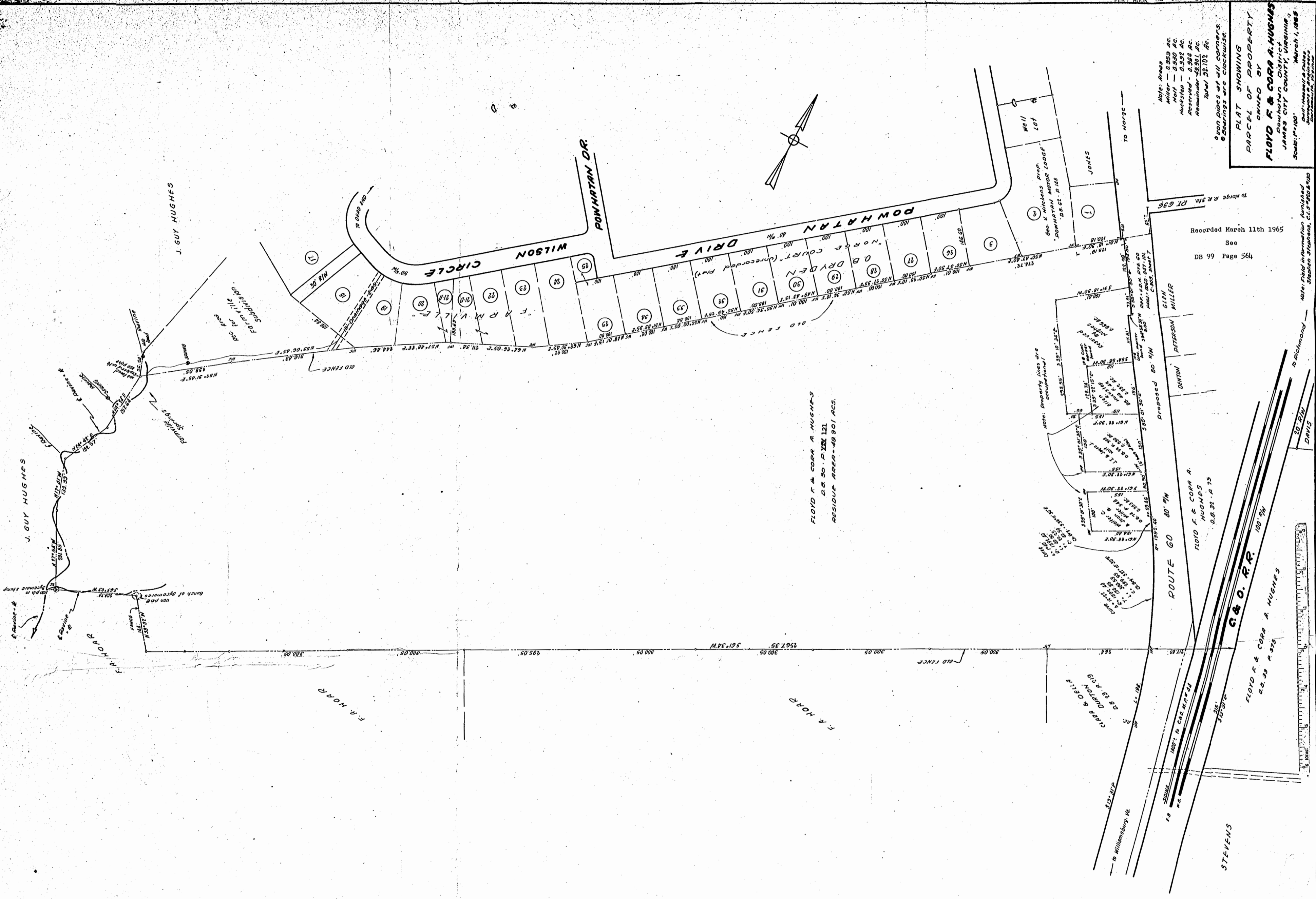
PLAT SHOWING
 PARCEL OF PROPERTY
 OWNED BY
FLOYD F & CORA A. HUGHES
 POWHATAN DISTRICT
 JAMES CITY COUNTY, VIRGINIA
 Scale: 1"=100' March 1, 1965
 (See Map of a Subdivided
 Section of the
 Powhatan District)

Note: Areas
 Miller - 0.859 AC.
 Holt - 0.530 AC.
 Hockstep - 0.332 AC.
 Reserved - 0.366 AC.
 Remainder - 48.991 AC.
 Total 52.102 AC.

Iron pipes at all corners.
 Bearings are clockwise.

Recorded March 11th 1965
 See
 DB 99 Page 564

Note: Field information furnished
 Stephen Stephens, C.S. 5-500 & 450



FLOYD F & CORA A. HUGHES
 D.B. 99, P. 121
 RESIDUE AREA - 48.991 ACS.

ROUTE 60 80' R/W
 FLOYD F & CORA A. HUGHES
 D.B. 32, P. 15

G & O. R.R.
 FLOYD F & CORA A. HUGHES
 D.B. 33 P. 975

STEVENS

