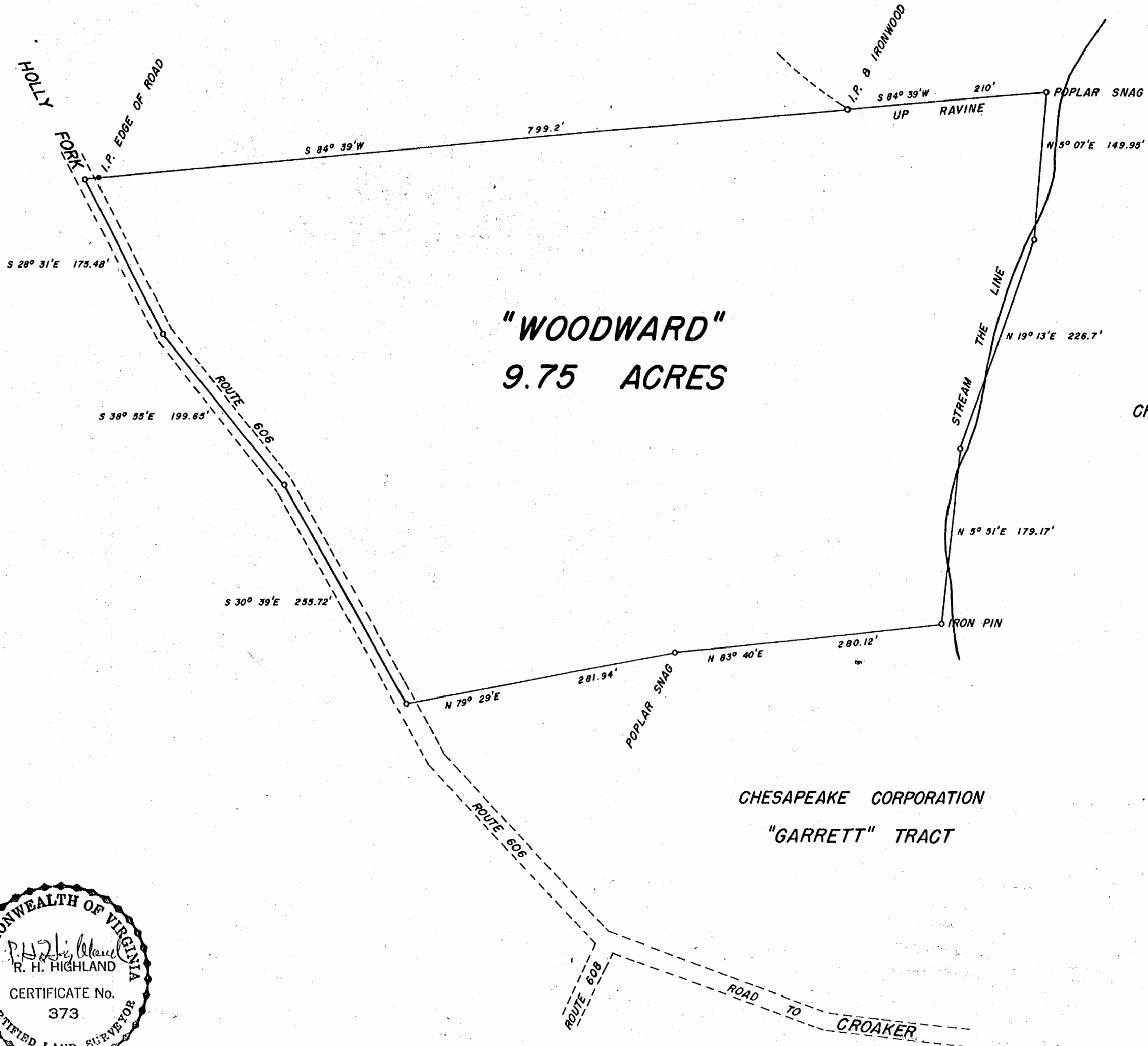
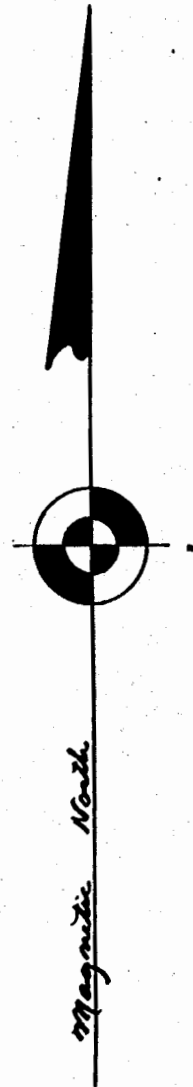


CHESAPEAKE CORPORATION

"GARRETT" TRACT

Recorded Feb. 25, 1965
see
D. B. 93, page 564

TAYLOR EST.



"WOODWARD"
9.75 ACRES

CHESAPEAKE CORPORATION
"GARRETT" TRACT

CHESAPEAKE CORPORATION
"GARRETT" TRACT

THE
CHESAPEAKE CORPORATION
OF VIRGINIA

TRACT NAME "WOODWARD"
DISTRICT STONEHOUSE
COUNTY JAMES CITY
STATE VIRGINIA
SCALE 1" = 100'

DATE FEB. 16, 1965

