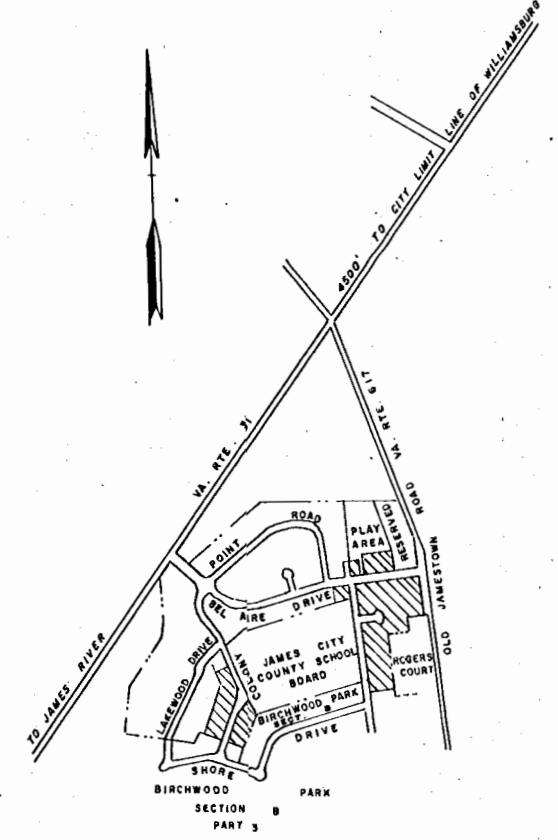
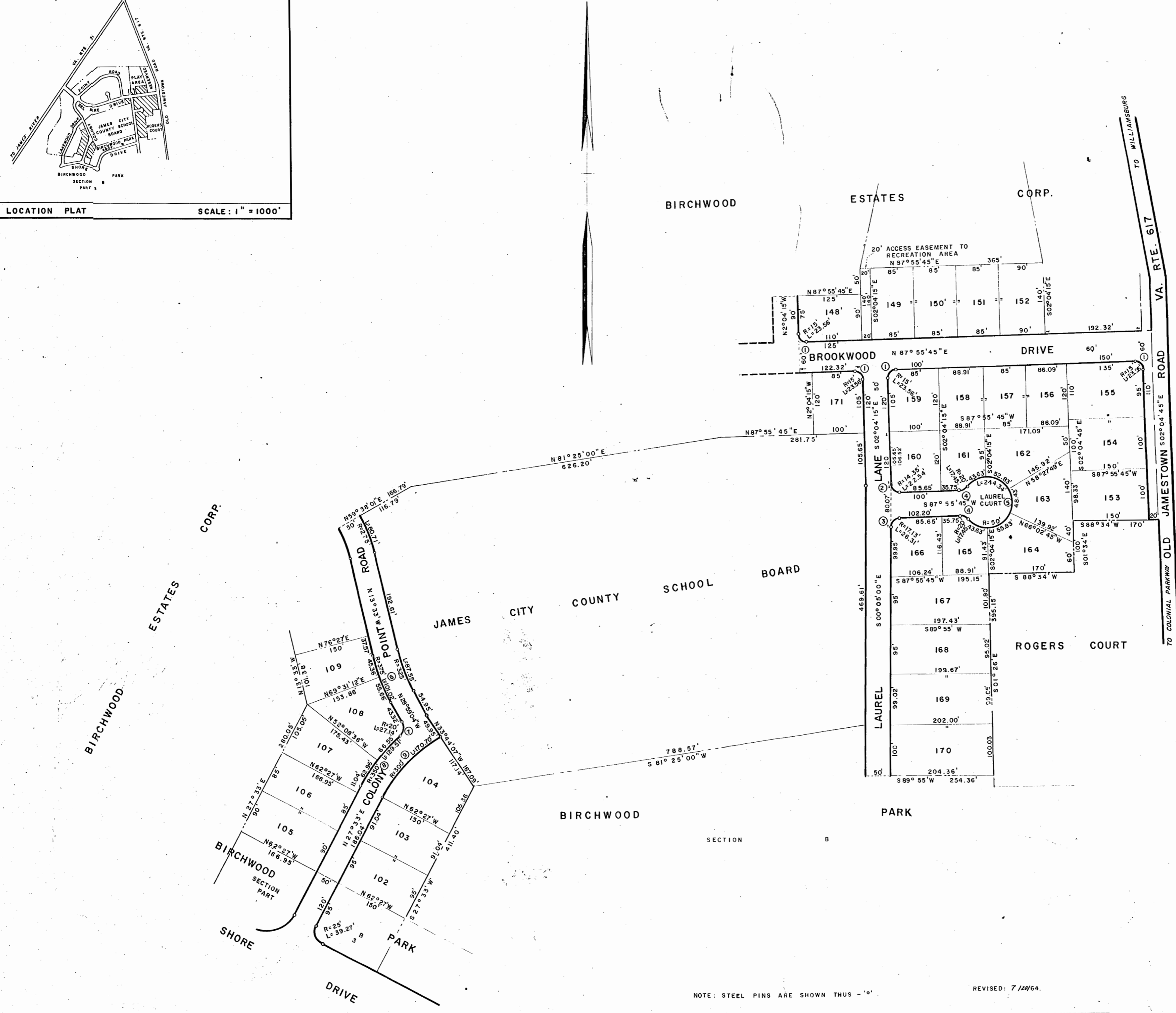


CURVE		DATA		
NO.	RADIUS	DELTA	TANGENT	LENGTH
1	15.00'	90° 00' 00"	15.00'	23.56'
2	14.35'	90° 00' 00"	14.35'	22.54'
3	17.13'	98° 00' 45"	16.55'	26.31'
4	20.00'	49° 59' 41"	9.33'	17.45'
5	50.00'	279° 59' 22"		244.34'
6	375.00'	15° 26' 04"	50.82'	101.02'
7	20.00'	77° 44' 10"	16.12'	27.14'
8	350.00'	21° 12' 06"	65.01'	129.01'
9	300.00'	32° 36' 06"	87.73'	170.70'



LOCATION PLAT SCALE: 1" = 1000'



Recorded 24th day of Aug. 1964
 In
 PLAT BOOK 24 pages 7

NOTE: STEEL PINS ARE SHOWN THUS - 'o'

REVISED: 7/14/64.



SUBDIVISION OF
MARLBORO
 JAMESTOWN DISTRICT
 JAMES CITY COUNTY, VIRGINIA
 SCALE: 1" = 100' MAY 14, 1964
BALDWIN AND GREGG
 CIVIL ENGINEERS & SURVEYORS
 NORFOLK, VIRGINIA