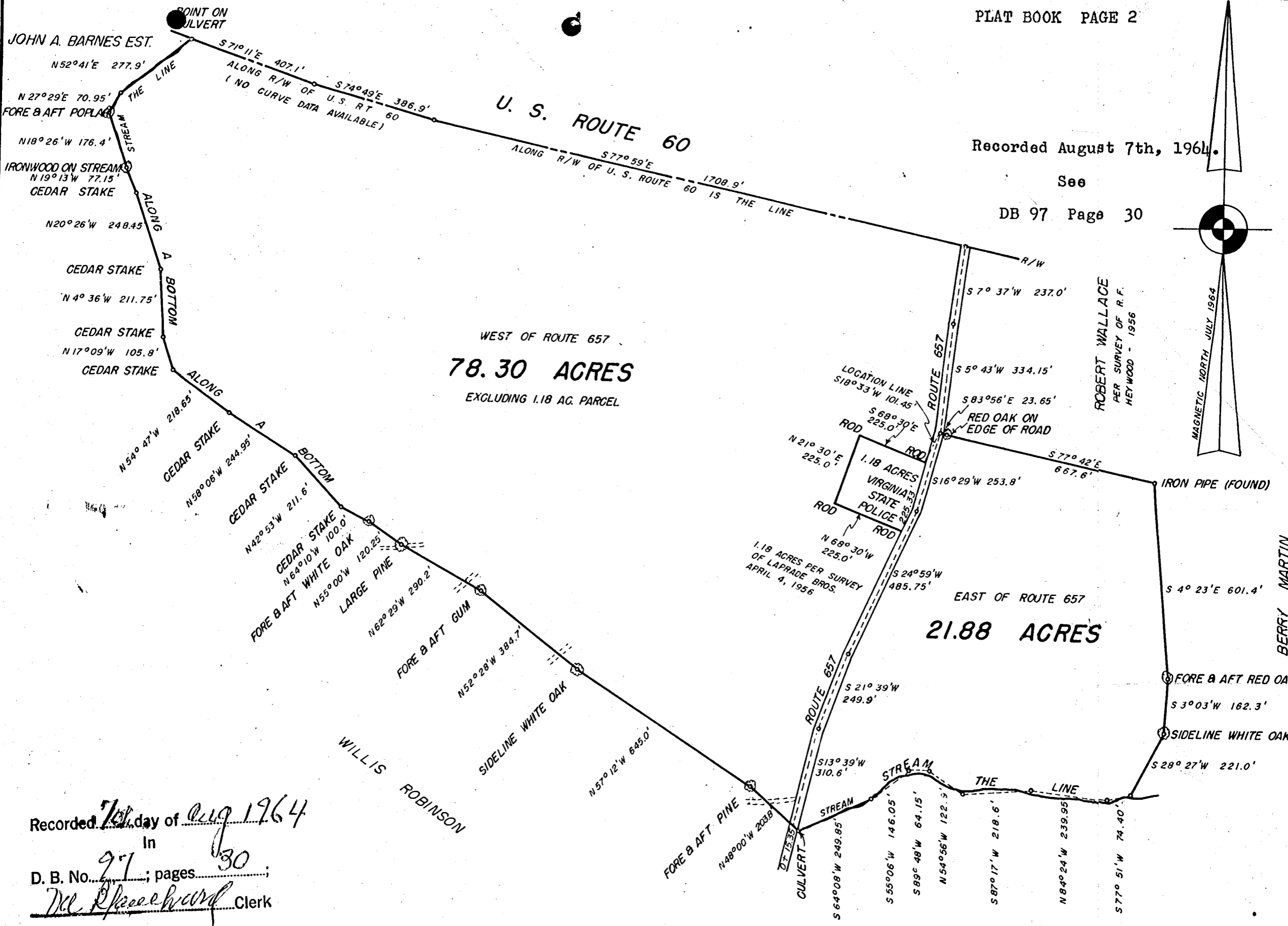
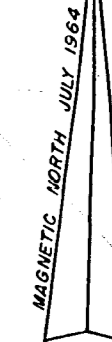


Recorded August 7th, 1964.

See

DB 97 Page 30



WEST OF ROUTE 657
78.30 ACRES
EXCLUDING 1.18 AC. PARCEL

EAST OF ROUTE 657
21.88 ACRES

Recorded 7th day of Aug 1964
in
D. B. No. 97; pages 30;
W. F. Woodward Clerk



PLAT OF SURVEY
A TRACT CONTAINING 100.18 ACRES
OWNED BY
G. L. WOODWARD & W. F. WOODWARD

TOTAL AREA = 100.18 ACRES
AREA IN RT. 657 = 1.09 ACRES

POWHATAN MAGISTERIAL DIST.
JAMES CITY COUNTY, VIRGINIA
SCALE: 1" = 300'
JULY 27, 1964

NOTE: LINES SHOWN BY
W. F. WOODWARD