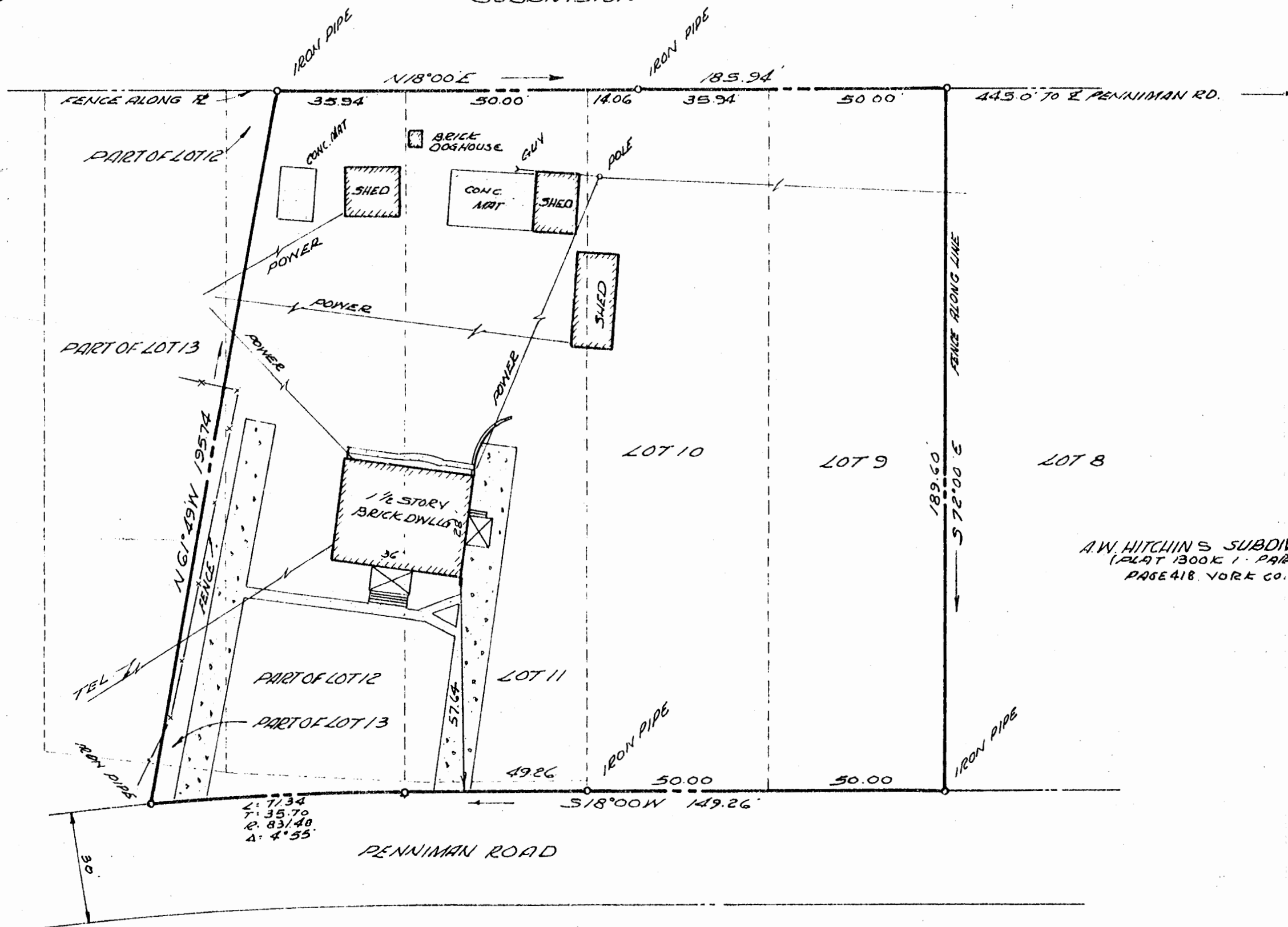
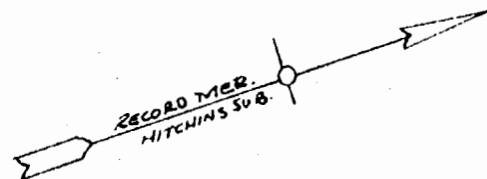


EAST WILLIAMSBURG SUBDIVISION



W.A. SCHREIBER

A.W. HITCHINS SUBDIVISION (PLAT BOOK 1 - PART 2 PAGE 418, YORK CO.)

Recorded 23 day of March 1964
 in
 D. B. No. 36; pages 114;
W. A. Blackburg Clerk

M. MANUS, MROCK & M. MANUS
 CIVIL ENGINEER, LAND SURVEYORS
 WILLIAMSBURG, VIRGINIA

NOTE: HIGHWAY R. W. AS SHOWN IS
 FROM C.E. ST. INFORMATION AVAILABLE

PLAT SHOWING SURVEY
 OF A PARCEL OF LAND
 TO BE CONVEYED TO
 WILLIAM A. SCHREIBER III
 CITY OF WILLIAMSBURG
 VIRGINIA
 SCALE 1" = 30'
 FEBRUARY 26, 1964
 1963 P79