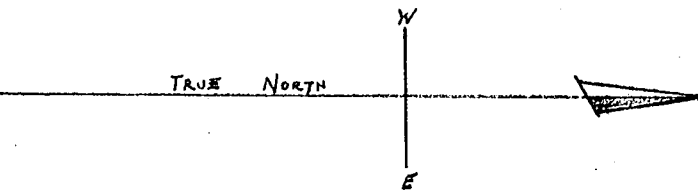
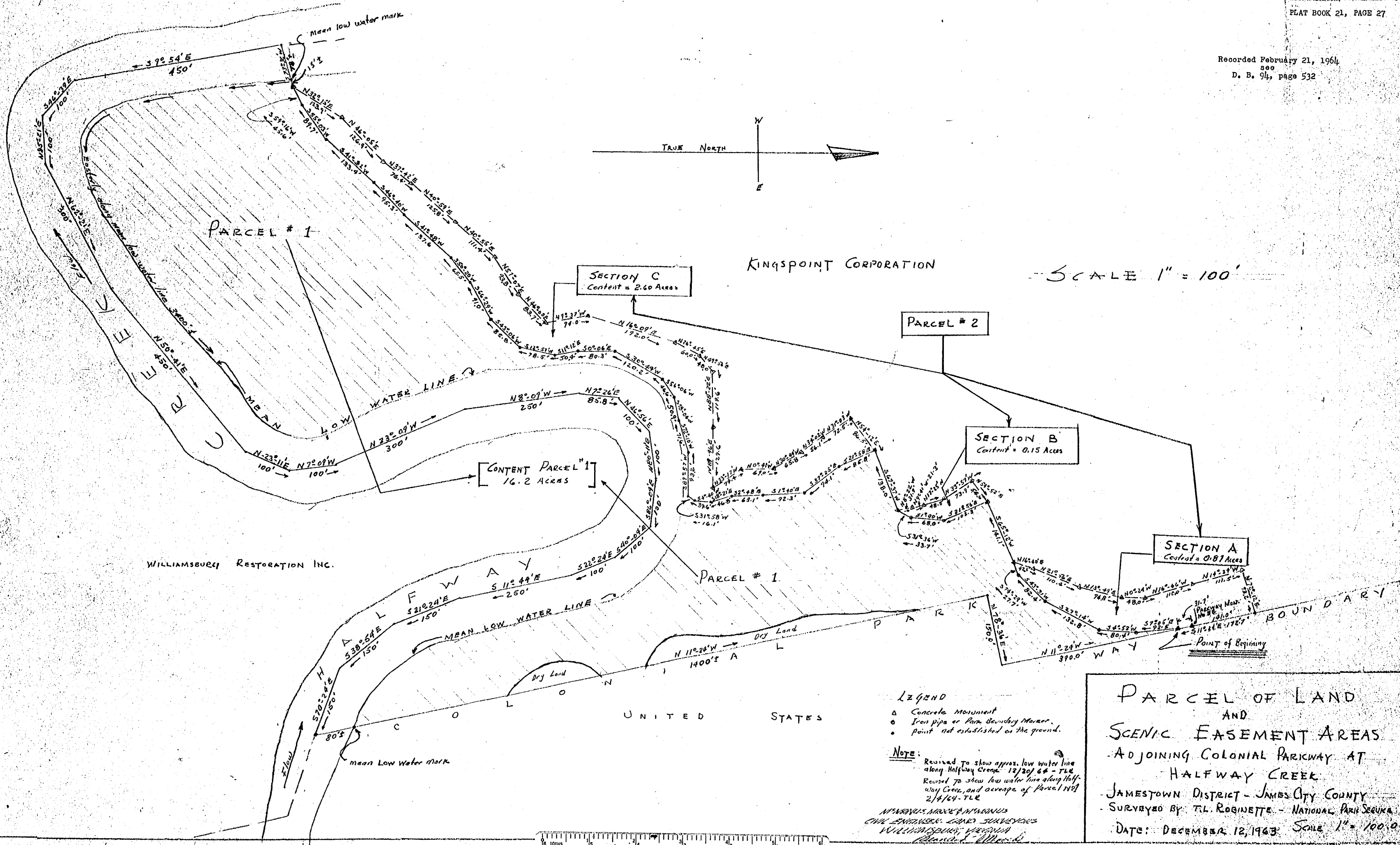


Recorded February 21, 1964
D. B. 94, page 532



KINGSPONT CORPORATION

SCALE 1" = 100'

SECTION C
Content = 2.60 Acres

PARCEL # 2

SECTION B
Content = 0.15 Acres

SECTION A
Content = 0.87 Acres

PARCEL # 1

CONTENT PARCEL # 1
16.2 ACRES

WILLIAMSBURG RESTORATION INC.

UNITED STATES

- LEGEND
- △ Concrete Monument
 - Iron pipe or Park Boundary Marker
 - Point not established on the ground.

NOTE:
 Revised to show approx. low water line along Halfway Creek 12/20/64 - TLE
 Revised to show low water line along Halfway Creek, and acreage of Parcel No. 1 2/4/64 - TLE

WILLIAMSBURG RESTORATION INC.
 CIVIL ENGINEER, LAND SURVEYOR
 WILLIAMSBURG, VIRGINIA
 (Seal)

PARCEL OF LAND
 AND
 SCENIC EASEMENT AREAS
 ADJOINING COLONIAL PARKWAY AT
 HALFWAY CREEK
 JAMESTOWN DISTRICT - JAMES CITY COUNTY
 SURVEYED BY T.L. ROBINETTE - NATIONAL PARK SERVICE
 DATE: DECEMBER 12, 1963 SCALE 1" = 100.0

