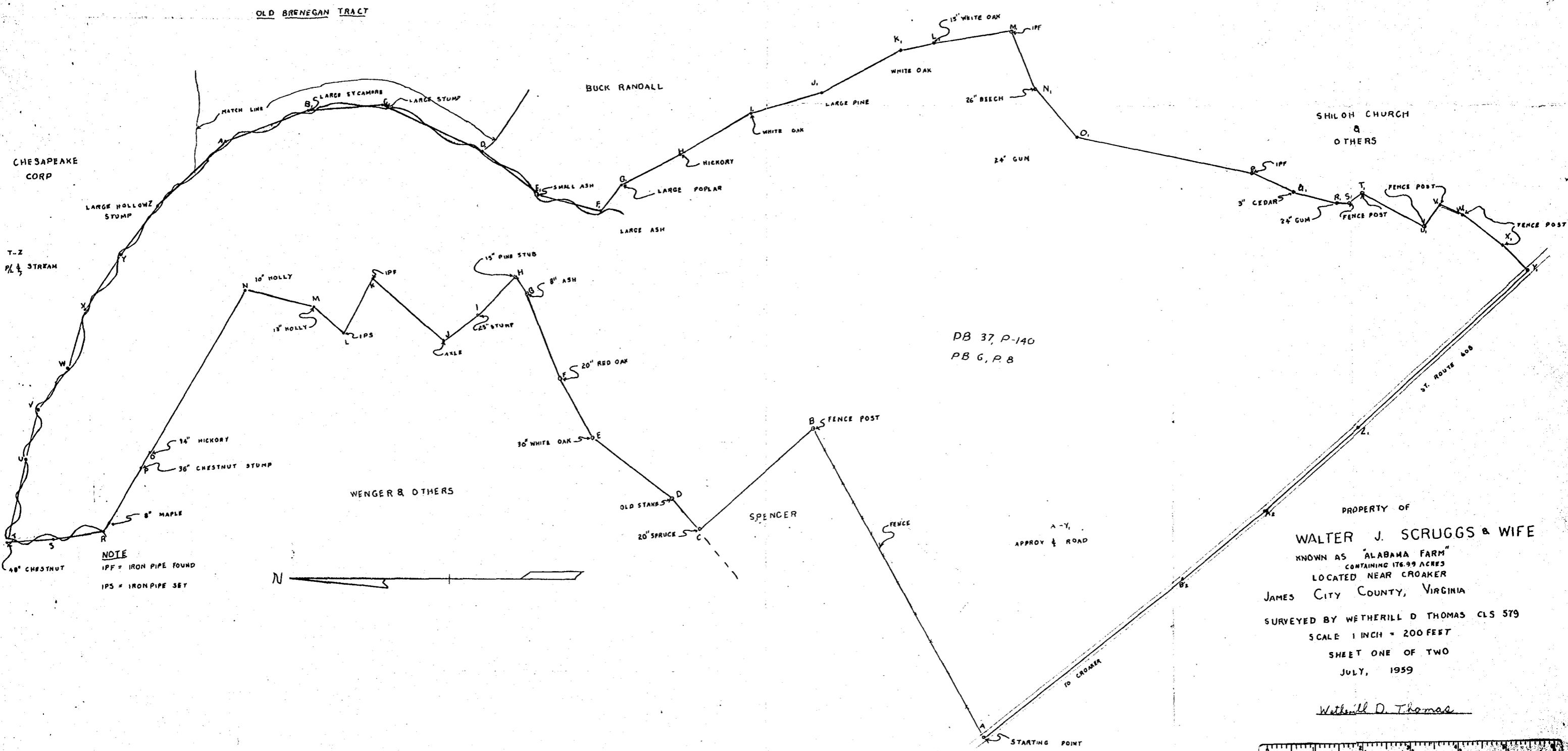


COURSE	BEARING	DISTANCE
A-B	N59°58'10"E	148.84
B-C	N39°06'00"W	648.49
C-D	N49°48'20"E	162.64
D-E	N36°13'00"E	418.68
E-F	N63°49'00"E	288.47
F-G	N67°27'30"E	385.12
G-H	N55°35'30"E	72.11
H-I	N44°55'30"W	213.78
I-J	N39°36'00"W	178.70
J-K	N40°41'45"E	393.03
K-L	N61°58'15"W	262.20
L-M	N40°15'26"E	161.03
M-N	N13°29'00"E	292.54
N-O	N60°00'55"W	774.63
O-P	N60°16'00"W	74.43
P-Q	N59°17'00"W	259.96
Q-R	N59°24'00"W	46.00
R-S	N7°35'30"W	207.13

COURSE	BEARING	DISTANCE
S-T	N4°17'22"E	192.39
T-U	S77°54'17"E	346.00
U-V	S76°41'30"E	209.43
V-W	S53°11'45"E	208.27
W-X	S74°04'15"E	237.91
X-Y	S57°07'30"E	268.18
Y-Z	S52°00'30"E	253.96
Z-A <sub>1</sub>	S43°05'46"E	383.71
A <sub>1</sub> -B <sub>1</sub>	S20°54'30"E	368.02
B <sub>1</sub> -C <sub>1</sub>	S4°40'00"E	311.88
C <sub>1</sub> -D <sub>1</sub>	S23°49'30"W	455.81
D <sub>1</sub> -E <sub>1</sub>	S36°47'00"W	273.58
E <sub>1</sub> -F <sub>1</sub>	S13°35'39"W	270.06
F <sub>1</sub> -G <sub>1</sub>	S51°32'30"E	136.59
G <sub>1</sub> -H <sub>1</sub>	S27°32'30"E	278.31
H <sub>1</sub> -I <sub>1</sub>	S29°52'30"E	337.83
I <sub>1</sub> -J <sub>1</sub>	S16°27'00"E	346.12
J <sub>1</sub> -K <sub>1</sub>	S28°53'00"E	373.01

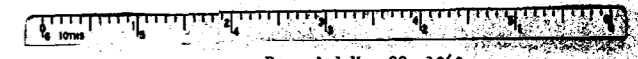
COURSE	BEARING	DISTANCE
K <sub>1</sub> -L <sub>1</sub>	S12°27'48"E	136.97
L <sub>1</sub> -M <sub>1</sub>	S8°37'30"E	329.10
M <sub>1</sub> -N <sub>1</sub>	S68°01'00"W	256.66
N <sub>1</sub> -O <sub>1</sub>	S47°52'43"W	315.30
O <sub>1</sub> -P <sub>1</sub>	S11°19'30"W	741.50
P <sub>1</sub> -Q <sub>1</sub>	S25°28'00"W	181.06
Q <sub>1</sub> -R <sub>1</sub>	S12°17'10"W	192.04
R <sub>1</sub> -S <sub>1</sub>	S8°29'15"W	52.50
S <sub>1</sub> -T <sub>1</sub>	S36°48'30"E	47.73
T <sub>1</sub> -U <sub>1</sub>	S27°40'30"W	297.93
U <sub>1</sub> -V <sub>1</sub>	S54°02'45"E	101.37
V <sub>1</sub> -W <sub>1</sub>	S18°58'30"W	109.45
W <sub>1</sub> -X <sub>1</sub>	S36°04'15"W	210.89
X <sub>1</sub> -Y <sub>1</sub>	S49°20'00"W	148.37
Y <sub>1</sub> -Z <sub>1</sub>	N41°53'00"W	955.68
Z <sub>1</sub> -A <sub>2</sub>	N40°36'30"W	516.45
A <sub>2</sub> -B <sub>2</sub>	N39°51'30"W	449.25
B <sub>2</sub> -A	N37°42'00"W	1059.41



DB 37, P-140  
PB 6, P. 8

PROPERTY OF  
**WALTER J. SCRUGGS & WIFE**  
KNOWN AS "ALABAMA FARM"  
CONTAINING 176.99 ACRES  
LOCATED NEAR CROAKER  
JAMES CITY COUNTY, VIRGINIA  
SURVEYED BY WETHERILL D THOMAS CLS 579  
SCALE 1 INCH = 200 FEET  
SHEET ONE OF TWO  
JULY, 1959

*Wetherill D. Thomas*



Recorded May 22, 1963  
D. B. 90, page 610