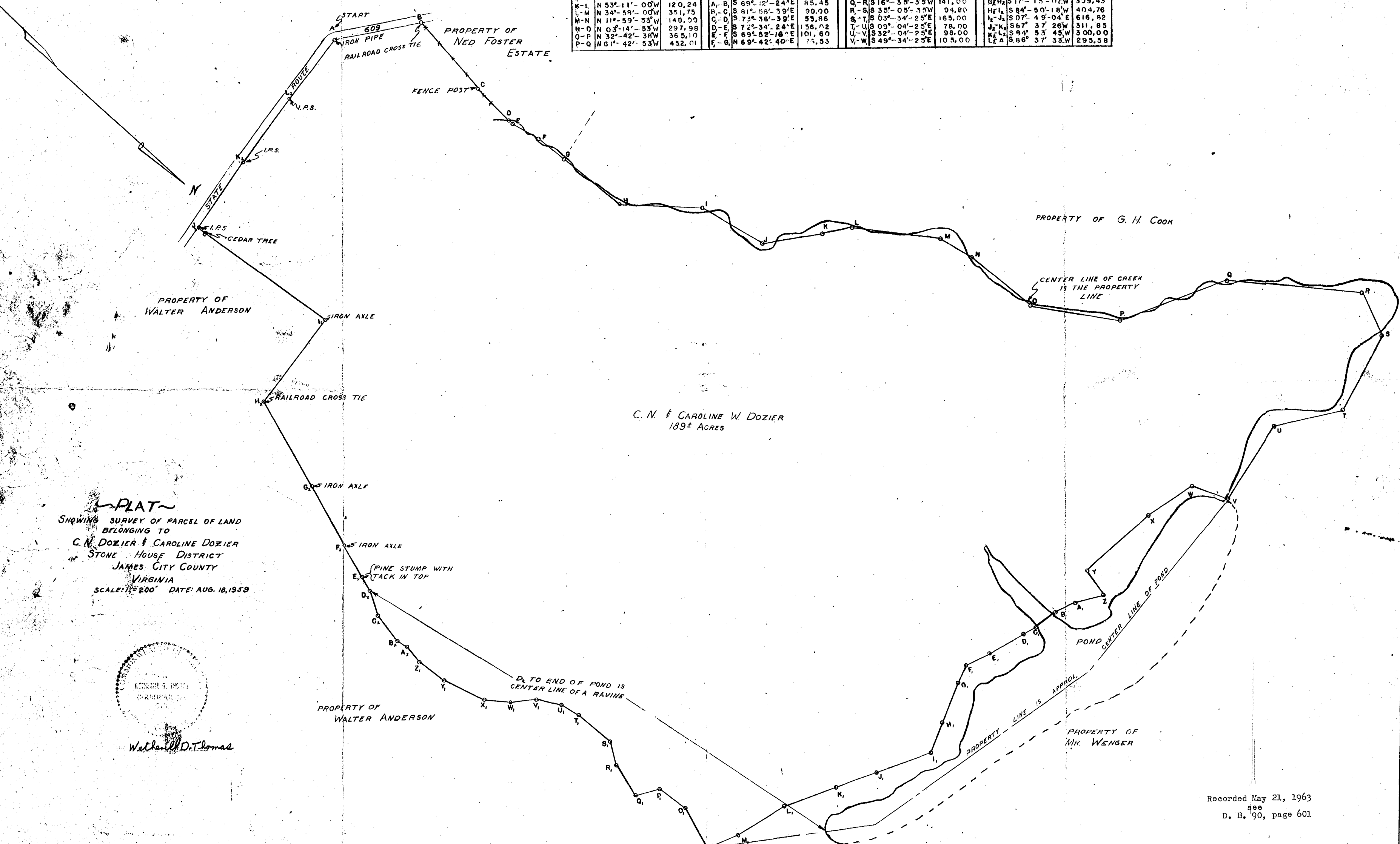


\$3.50

**LEGEND**

A-B	N 59° 32' - 45" W	355.39	Q-R	N 35° 41' - 23" W	544.56	G-H	N 68° 05' - 47" E	163.26	W-X	S 40° - 04' - 25" E	101.00
B-C	N 08° 30' - 07" E	341.90	R-S	N 22° 47' - 22" E	185.81	H-I	N 68° 49' - 17" E	125.35	X-Y	S 19° - 44' - 25" E	180.00
C-D	N 08° 50' - 08" E	171.23	S-T	N 80° 00' - 07" E	290.19	I-J	S 62° - 10' - 43" E	228.57	Y-Z	S 08° - 54' - 25" E	123.00
D-E	N 07° 15' - 00" E	116.21	T-U	S 55° 44' - 53" E	284.49	J-K	S 61° - 40' - 43" E	170.42	Z-A	S 04° - 45' - 35" W	76.00
E-F	N 19° - 36' - 45" W	118.22	U-V	N 79° 00' - 30" E	335.37	K-L	S 62° - 40' - 43" E	222.04	A <sub>2</sub> B <sub>2</sub>	S 11° - 04' - 25" E	45.00
F-G	N 03° - 31' - 15" W	135.79	V-W	S 23° - 37' - 53" E	150.83	L-M	S 74° - 17' - 14" E	209.53	B <sub>2</sub> C <sub>2</sub>	S 08° - 00' - 35" W	122.00
G-H	N 04° - 15' - 30" W	283.38	W-X	S 77° - 21' - 38" E	209.65	M-N	S 66° - 28' - 03" E	134.74	C <sub>2</sub> D <sub>2</sub>	S 28° - 00' - 35" W	103.00
H-I	N 40° - 34' - 15" W	323.93	X-Y	S 85° - 21' - 01" E	321.54	N-O	S 18° - 35' - 35" W	170.00	D <sub>2</sub> E <sub>2</sub>	S 05° - 45' - 35" W	82.00
I-J	N 12° - 28' - 15" W	283.16	Y-Z	N 09° - 32' - 44" E	122.75	O-P	S 04° - 44' - 25" E	130.00	E <sub>2</sub> F <sub>2</sub>	S 17° - 24' - 07" W	145.21
J-K	N 52° - 38' - 15" W	240.94	Z-A	S 57° - 31' - 16" E	113.65	P-Q	S 57° - 23' - 25" E	100.90	F <sub>2</sub> G <sub>2</sub>	S 17° - 30' - 24" W	268.01
K-L	N 53° - 11' - 00" W	120.24	A <sub>1</sub> B <sub>1</sub>	S 69° - 12' - 24" E	85.45	Q-R	S 16° - 35' - 35" W	141.00	G <sub>2</sub> H <sub>2</sub>	S 17° - 15' - 07" W	309.43
L-M	N 34° - 58' - 00" W	351.75	B <sub>1</sub> C <sub>1</sub>	S 81° - 58' - 39" E	90.00	R-S	S 35° - 05' - 35" W	94.80	H <sub>2</sub> I <sub>2</sub>	S 84° - 50' - 18" W	404.76
M-N	N 11° - 59' - 53" W	140.09	C <sub>1</sub> D <sub>1</sub>	S 73° - 36' - 39" E	93.86	S-T	S 03° - 34' - 25" E	165.00	I <sub>2</sub> J <sub>2</sub>	S 07° - 49' - 04" E	616.82
N-O	N 03° - 14' - 55" W	297.98	D <sub>1</sub> E <sub>1</sub>	S 72° - 34' - 24" E	156.02	T-U	S 09° - 04' - 25" E	78.00	J <sub>2</sub> K <sub>2</sub>	S 67° - 37' - 26" W	311.85
O-P	N 32° - 42' - 38" W	365.10	E <sub>1</sub> F <sub>1</sub>	S 69° - 52' - 16" E	101.60	U-V	S 32° - 04' - 25" E	98.00	K <sub>2</sub> L <sub>2</sub>	S 94° - 53' - 45" W	300.00
P-Q	N 61° - 42' - 53" W	452.01	F <sub>1</sub> G <sub>1</sub>	N 69° - 42' - 40" E	75.53	V-W	S 49° - 34' - 25" E	105.00	L <sub>2</sub> A <sub>2</sub>	S 86° - 37' - 33" W	295.58



**PLAT**  
 SHOWING SURVEY OF PARCEL OF LAND  
 BELONGING TO  
**C. N. DOZIER & CAROLINE DOZIER**  
 STONE HOUSE DISTRICT  
 JAMES CITY COUNTY  
 VIRGINIA  
 SCALE: 1" = 200' DATE: AUG. 18, 1959



Wetherill D. Thomas

Recorded May 21, 1963  
 see  
 D. B. 90, page 601