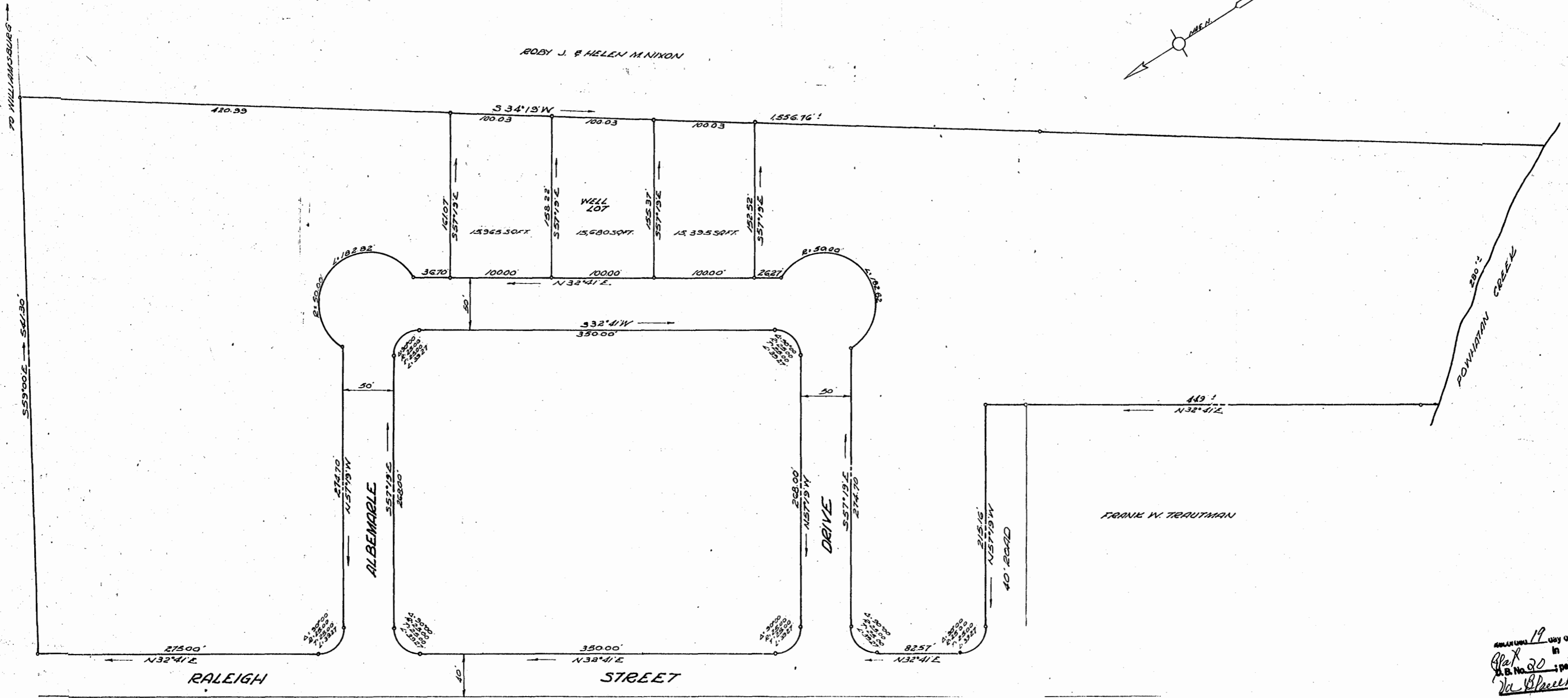


ROBY J. & HELEN M. NIXON



VIRGINIA STATE HIGHWAY ROUTE NO. 31

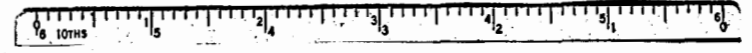
TO WILLIAMSBURG

POWHATAN CREEK

FRANK W. TRAUTMAN

APPROVED 19 day of Feb 1963  
Plat No. 20 in 33  
Va. Bluechard Clerk

MANNUS, NROCK & MANNUS  
CIVIL ENGINEERS & LAND SURVEYORS  
WILLIAMSBURG, VIRGINIA  
Bennett V. Moore



RALEIGH SQUARE  
SECTION "1"  
STANDING IN THE NAME OF  
RALEIGH SQUARE INCORPORATED  
JAMESTOWN DISTRICT  
JAMES CITY COUNTY VIRGINIA  
SCALE 1" = 50'  
FEBRUARY 1963