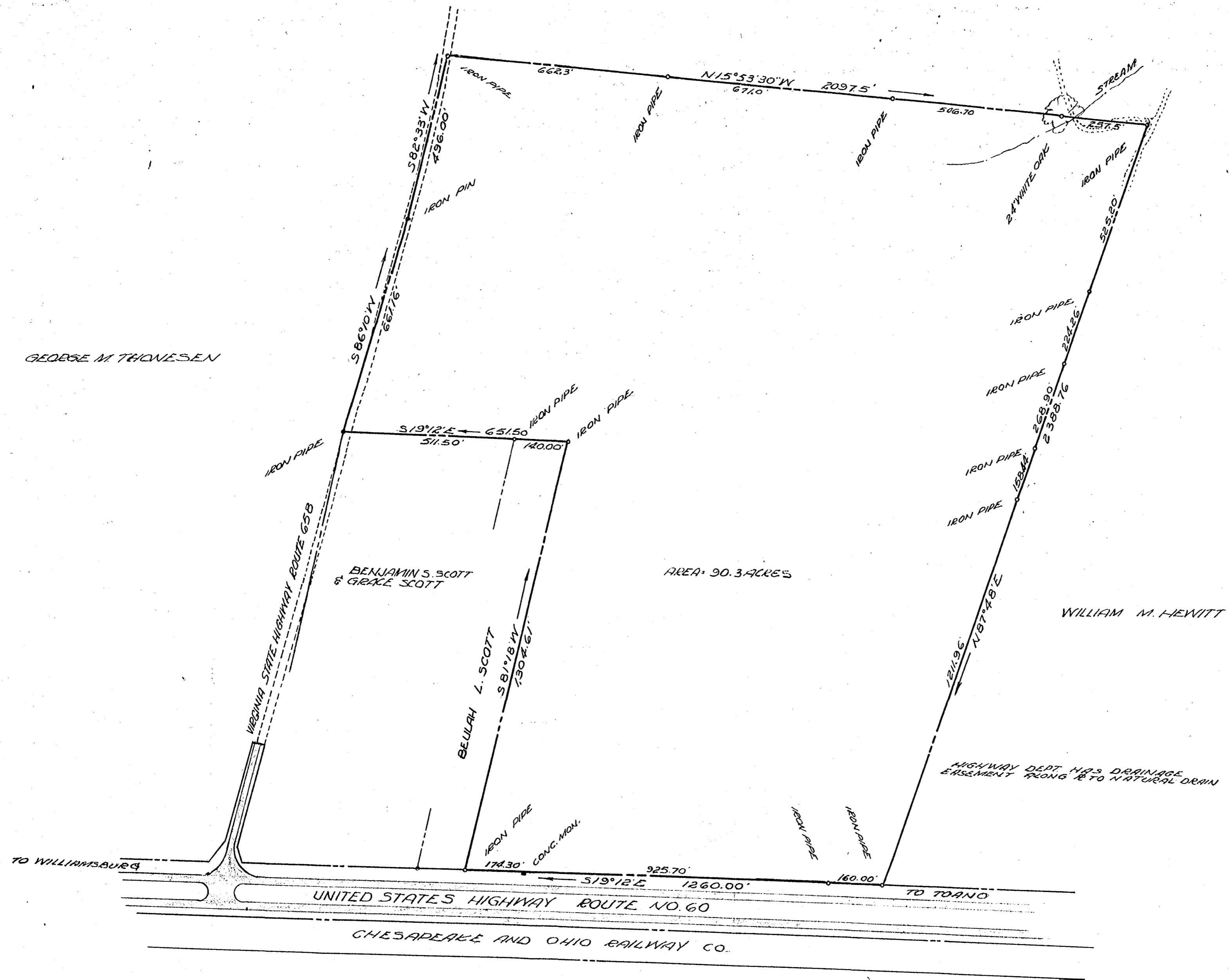


GEORGE M. THOMSEN



AREA: 90.3 ACRES

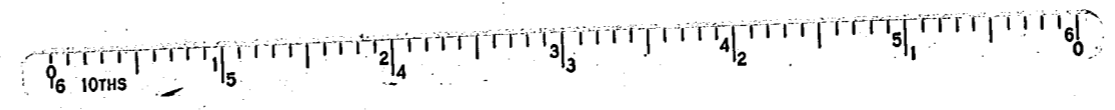
BENJAMIN S. SCOTT & GRACE SCOTT

BEULAH L. SCOTT

WILLIAM M. HEWITT

HIGHWAY DEPT. HIGH DRAINAGE EASEMENT FROM R. TO NATURAL DRAIN

MANNUS, BROCK & MANNUS
CIVIL ENGINEERS - LAND SURVEYORS
WILLIAMSBURG, VIRGINIA
August 11, 1961



Recorded November 14, 1961
see
D. B. 83, page 321

PLAT SHOWING SURVEY
OF A PARCEL OF LAND
STANDING IN THE NAME OF
BENJAMIN S. SCOTT ESTATE
JAMESTOWN DISTRICT
JAMES CITY COUNTY, VIRGINIA
SCALE 1"=200' AUGUST 18, 1961